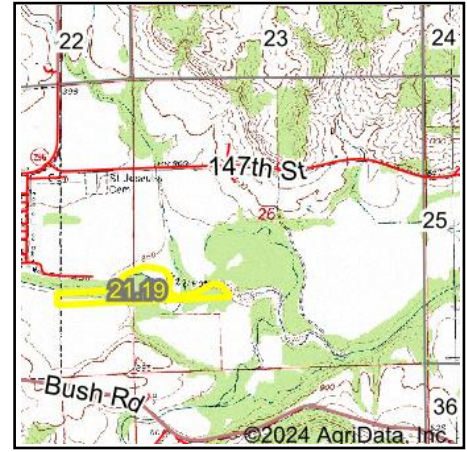
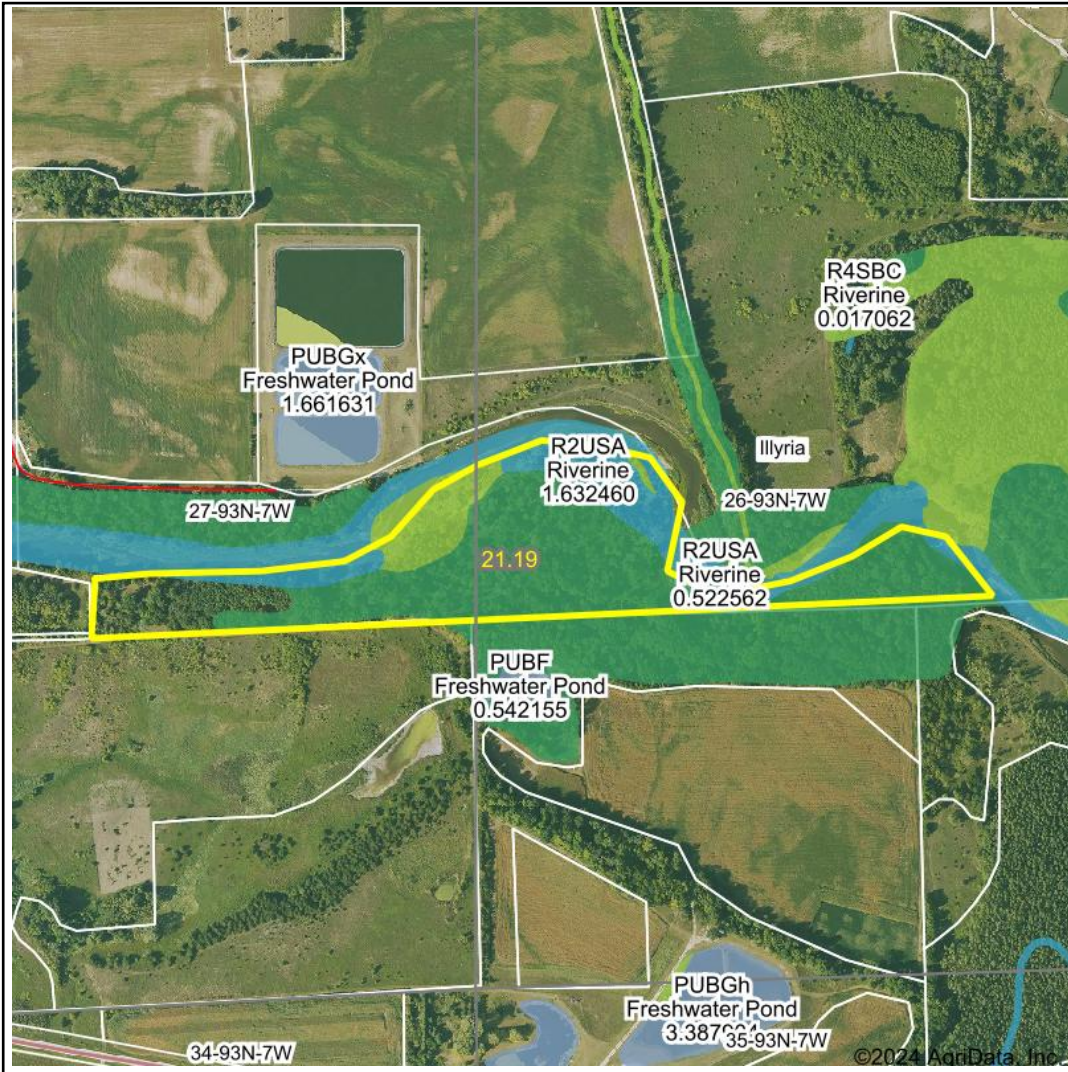


# Wetlands Map



**State:** Iowa  
**Location:** 26-93N-7W  
**County:** Fayette  
**Township:** Illyria  
**Date:** 6/26/2024



Maps Provided By:



© AgriData, Inc. 2023 www.AgriDataInc.com



0ft                      778ft                      1555ft

Classification Code	Type	Acres
PFO1A	Freshwater Forested/Shrub Wetland	12.40
R2UBG	Riverine	2.48
R2USA	Riverine	1.64
PEM1A	Freshwater Emergent Wetland	1.61
PEM1C	Freshwater Emergent Wetland	0.22
Total Acres		18.35

Data Source: National Wetlands Inventory website. U.S. DoI, Fish and Wildlife Service, Washington, D.C. <http://www.fws.gov/wetlands/>