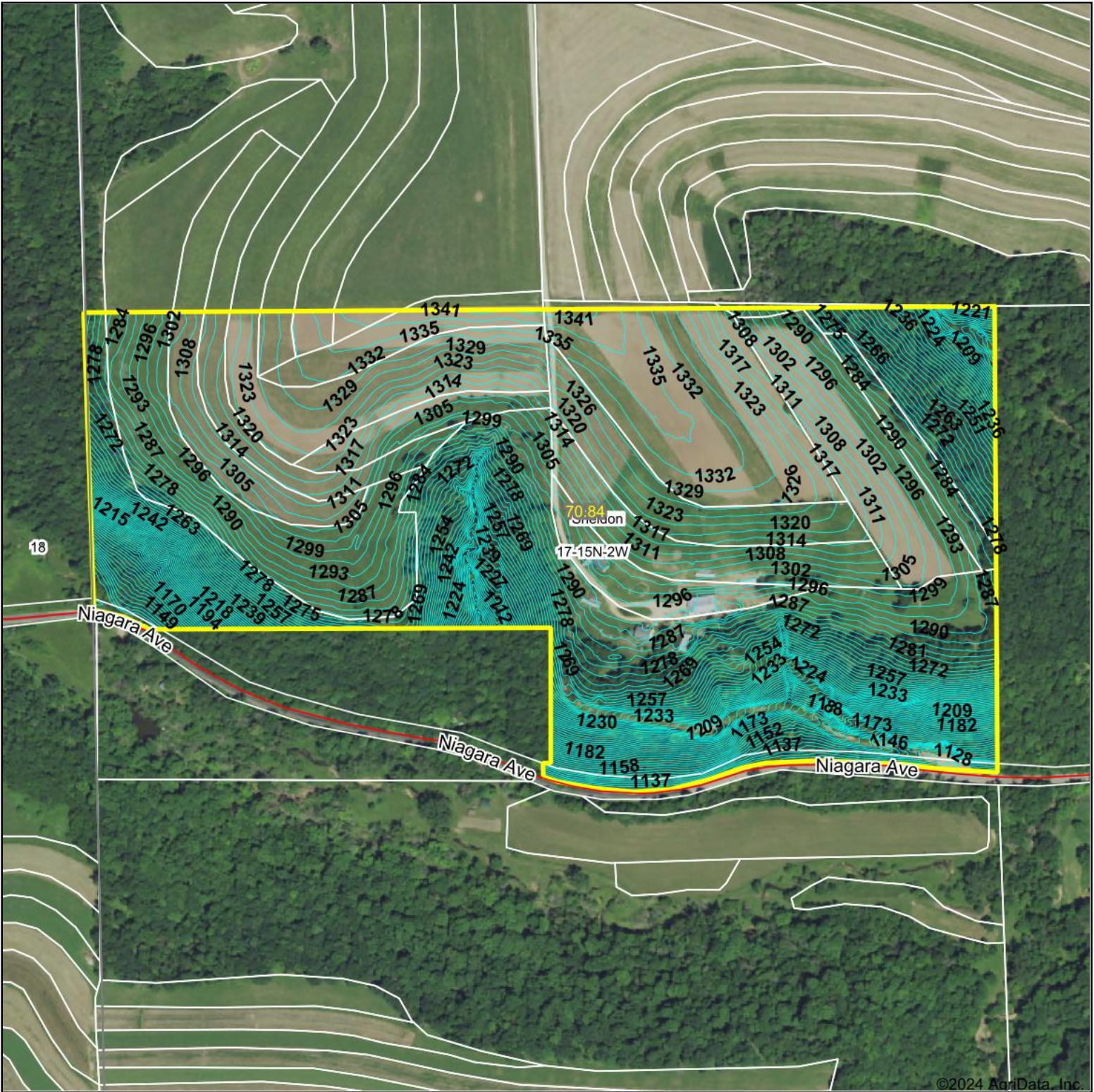


Topography Contours



©2024 AgriData, Inc.



HIGH POINT
LAND COMPANY

Maps Provided By:



CUSTOMIZED ONLINE MAPPING
www.AgriDataInc.com

© AgriData, Inc. 2023

Source: USGS 1 meter dem
Interval(ft): 3.0
Min: 1,111.2
Max: 1,343.1
Range: 231.9
Average: 1,279.5
Standard Deviation: 49.97 ft

0ft 460ft 919ft



5/26/2024

17-15N-2W
Monroe County
Wisconsin

Boundary Center: 43° 46' 30.11, -90° 38' 48.83

Field borders provided by Farm Service Agency as of 5/21/2008.