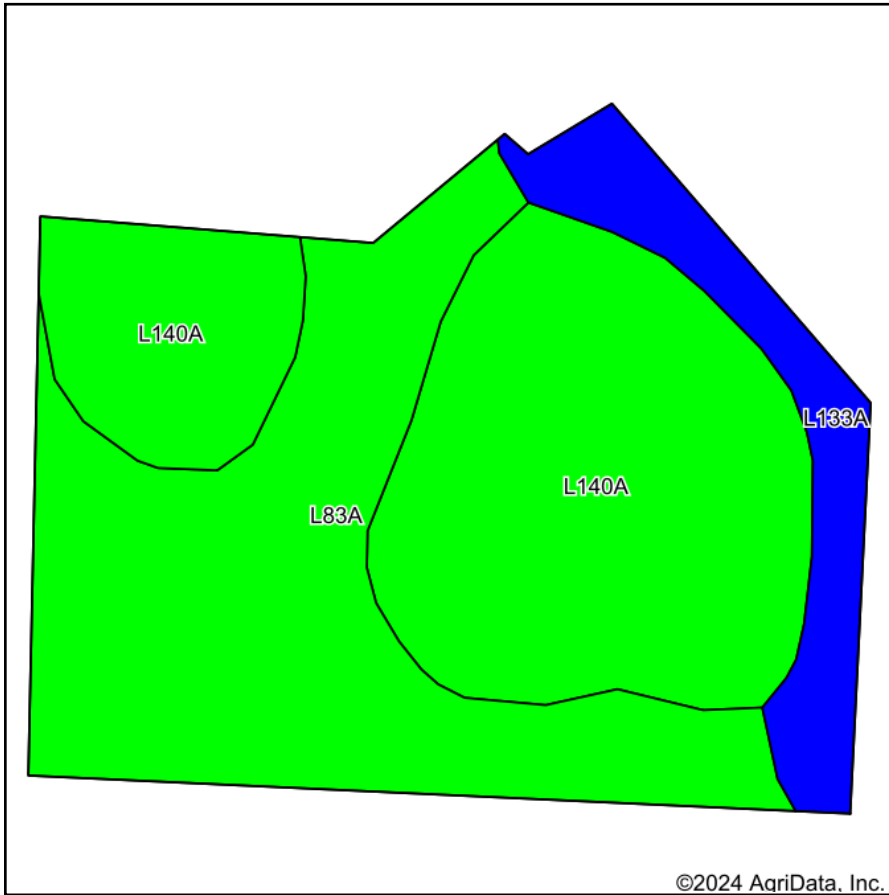
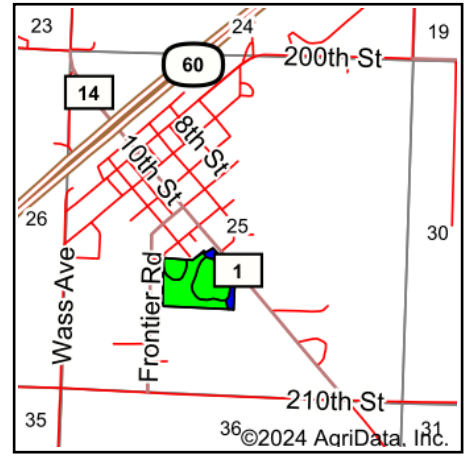


Soils Map



Soils data provided by USDA and NRCS.




State: **Minnesota**
 County: **Nobles**
 Location: **25-103N-39W**
 Township: **Brewster**
 Acres: **19.57**
 Date: **4/23/2024**

Maps Provided By:

 CUSTOMIZED ONLINE MAPPING
 © AgriData, Inc. 2023 www.AgriDataInc.com



Area Symbol: MN105, Soil Area Version: 22

Code	Soil Description	Acres	Percent of field	PI Legend	Non-Irr Class *c	Productivity Index
L140A	Ocheda silty clay loam, 1 to 3 percent slopes	9.23	47.2%		Iw	97
L83A	Webster clay loam, 0 to 2 percent slopes	8.13	41.5%		IIw	93
L133A	Waldorf silty clay loam, 0 to 2 percent slopes	2.21	11.3%		IIw	85
Weighted Average					1.53	94

*c: Using Capabilities Class Dominant Condition Aggregation Method

Soils data provided by USDA and NRCS.