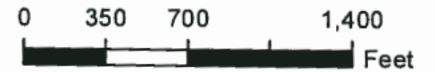


Farm 4326
Tract 1876

2023 Program Year

Map Created May 02, 2023

1033925



- Unless otherwise noted:
 Shares are 100% operator
 Crops are non-irrigated
 Corn = yellow for grain
 Soybeans = common soybeans for grain
 Wheat = HRS, HRW = Grain
 Sunflower = Oil, Non-Oil = Grain
 Oats and Barley = Spring for grain
 Rye = for grain
 Peas = process
 Alfalfa, Mixed Forage AGM, GMA, IGS = for forage
 Beans = Dry Edible
 NAG = for GZ
 Canola = Spring for seed

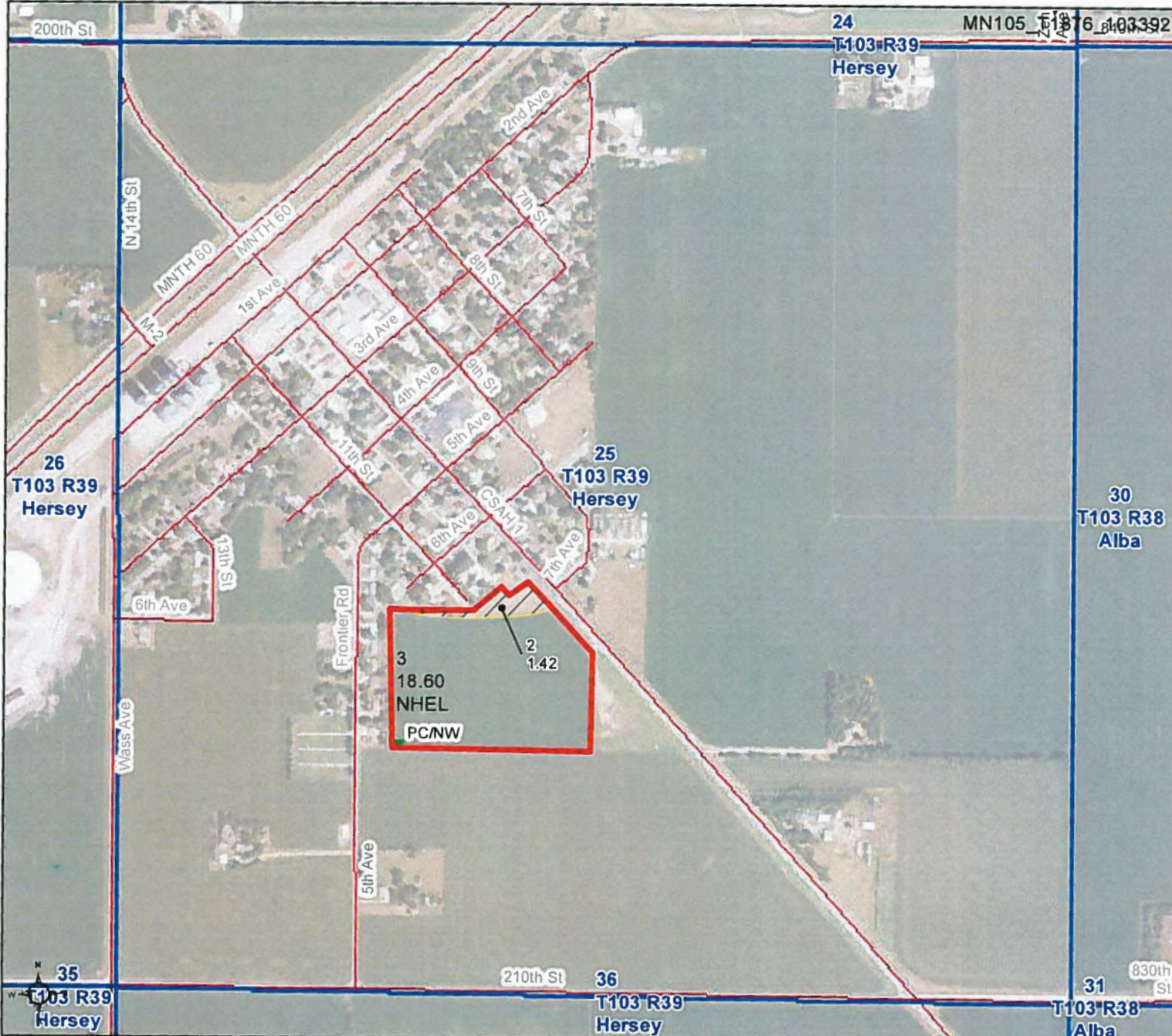
Common Land Unit

- Non-Cropland
- Cropland
- Tract Boundary

Wetland Determination Identifiers

- Restricted Use
- Limited Restrictions
- Exempt from Conservation Compliance Provisions

Tract Cropland Total: 18.60 acres



United States Department of Agriculture (USDA) Farm Service Agency (FSA) maps are for FSA Program administration only. This map does not represent a legal survey or reflect actual ownership; rather it depicts the information provided directly from the producer and/or National Agricultural Imagery Program (NAIP) imagery. The producer accepts the data 'as is' and assumes all risks associated with its use. USDA-FSA assumes no responsibility for actual or consequential damage incurred as a result of any user's reliance on this data outside FSA Programs. Wetland identifiers do not represent the size, shape, or specific determination of the area. Refer to your original determination (CPA-026 and attached maps) for exact boundaries and determinations or contact USDA Natural Resources Conservation Service (NRCS). This map displays the 2021 NAIP imagery.