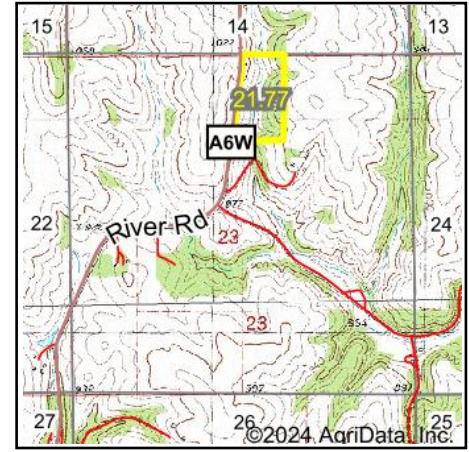


Wetlands Map



State: **Iowa**
 Location: **23-99N-7W**
 County: **Winneshiek**
 Township: **Pleasant**
 Date: **4/23/2024**


HIGH POINT
 LAND COMPANY
 Maps Provided By:

surety
 CUSTOMIZED ONLINE MAPPING
© AgriData, Inc. 2023 www.AgriDataInc.com



0ft 399ft 798ft

Classification Code	Type	Acres
R4SBC	Riverine	0.63
Total Acres		0.63

Data Source: National Wetlands Inventory website. U.S. DoI, Fish and Wildlife Service, Washington, D.C. <http://www.fws.gov/wetlands/>