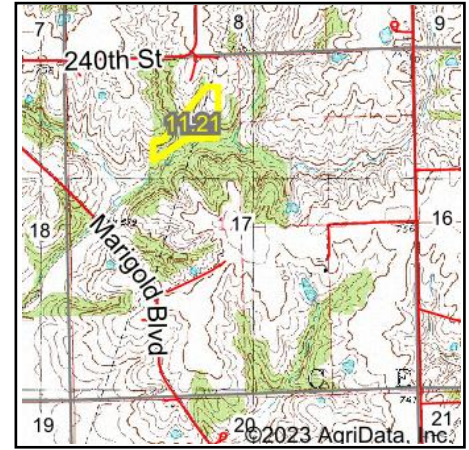
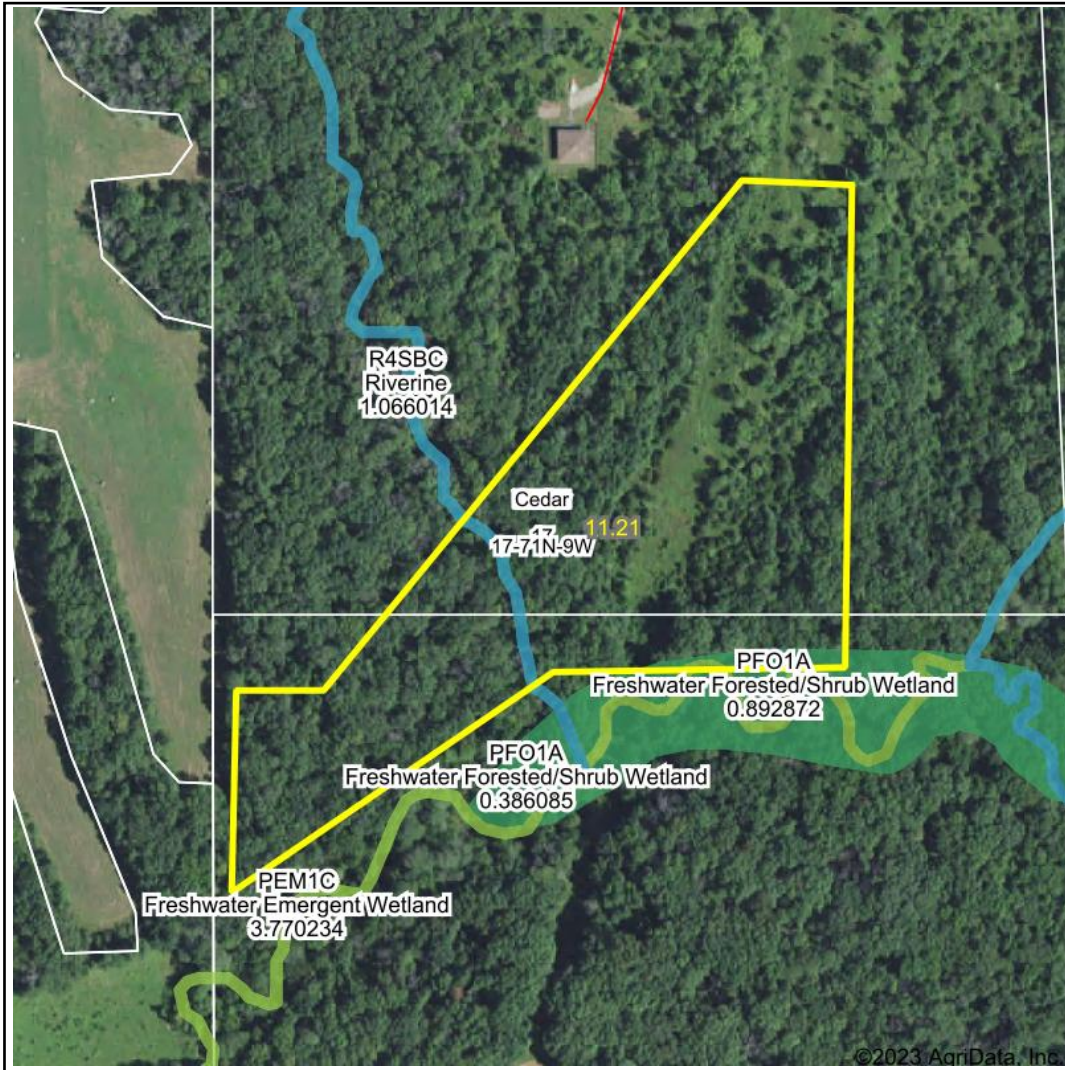


Wetlands Map



State: Iowa
Location: 17-71N-9W
County: Jefferson
Township: Cedar
Date: 8/19/2023



Maps Provided By:



© AgriData, Inc. 2023 www.AgriDataInc.com



0ft 359ft 718ft

Classification Code	Type	Acres
PFO1A	Freshwater Forested/Shrub Wetland	0.17
R4SBC	Riverine	0.14
PEM1C	Freshwater Emergent Wetland	0.03
Total Acres		0.34

Data Source: National Wetlands Inventory website. U.S. DoI, Fish and Wildlife Service, Washington, D.C. <http://www.fws.gov/wetlands/>