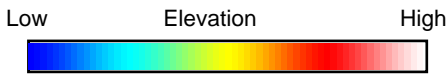
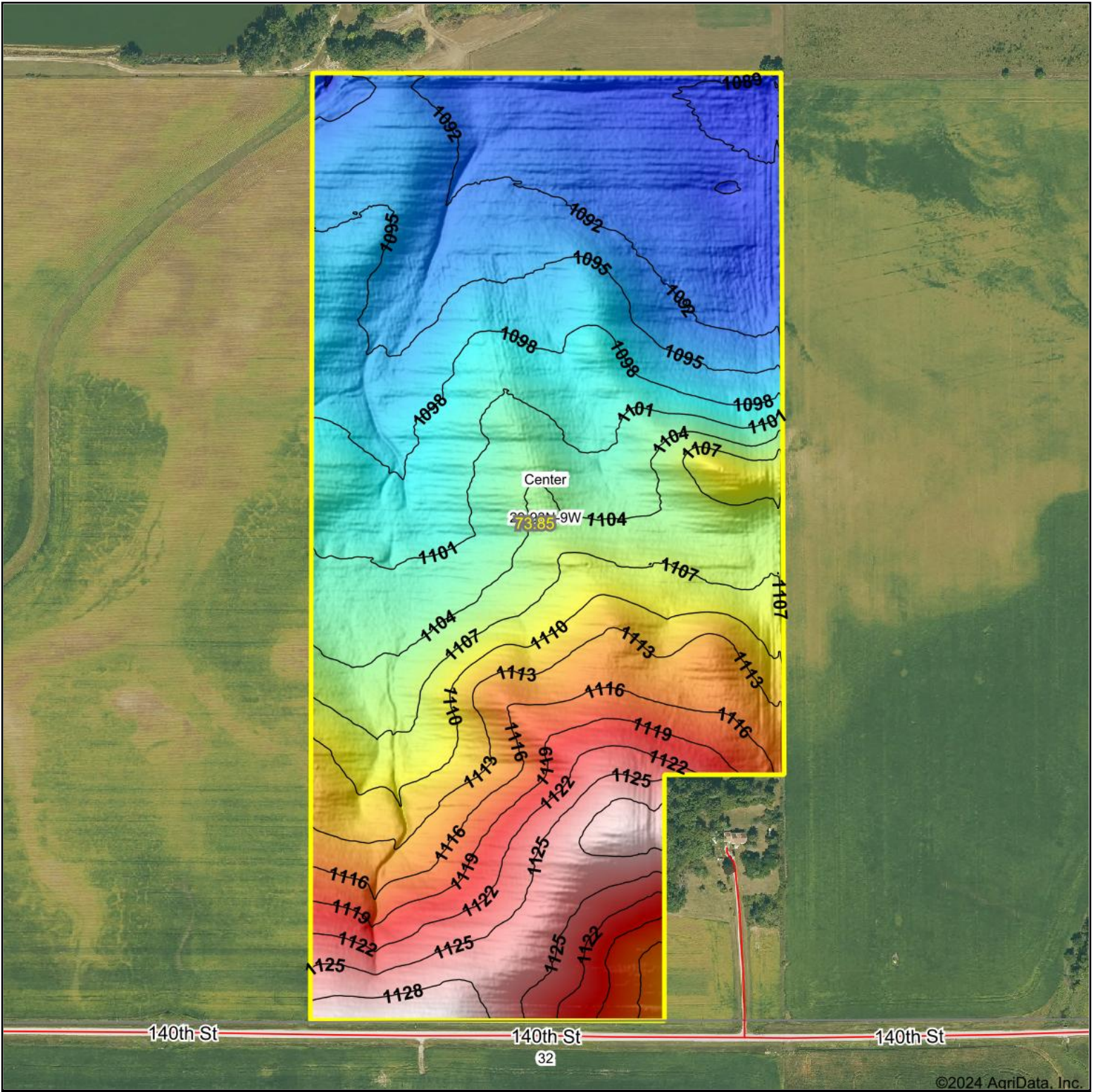
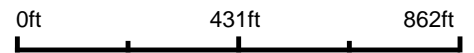


Topography Hillshade



Source: USGS 1 meter dem
 Interval(ft): 3
 Min: 1,087.7
 Max: 1,130.7
 Range: 43.0
 Average: 1,104.9
 Standard Deviation: 11.58 ft



29-93N-9W
Fayette County
Iowa

Boundary Center: 42° 50' 11.07, -91° 56' 9.6



Maps Provided By:



© AgriData, Inc. 2023

www.AgriDataInc.com