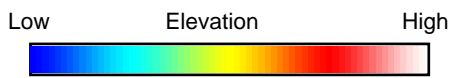
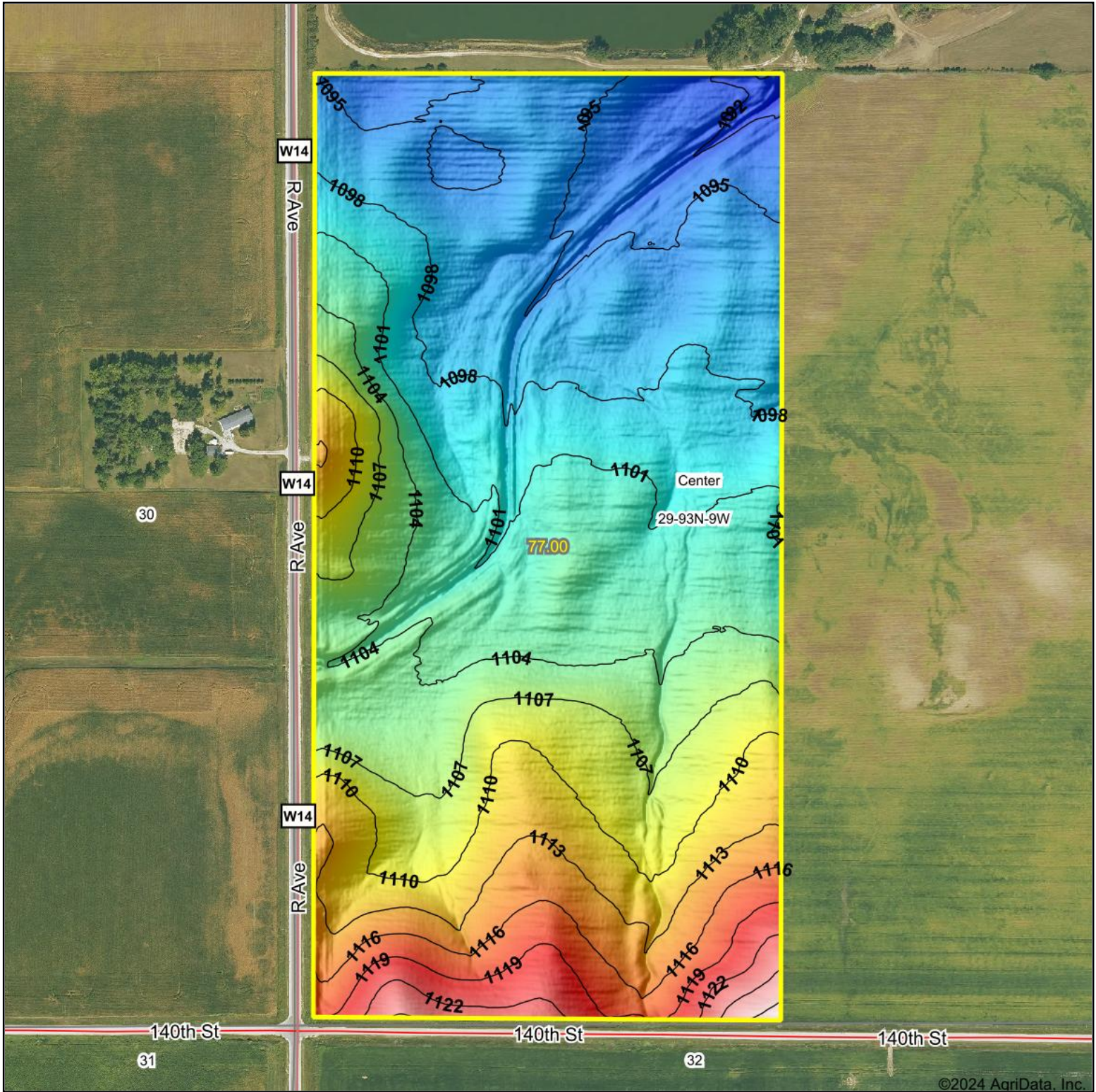


Topography Hillshade



Source: USGS 1 meter dem

Interval(ft): 3

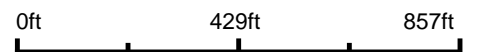
Min: 1,089.9

Max: 1,129.5

Range: 39.6

Average: 1,104.0

Standard Deviation: 7.64 ft



29-93N-9W
Fayette County
Iowa

Boundary Center: 42° 50' 11.17, -91° 56' 26.91



Maps Provided By:



© AgriData, Inc. 2023

www.AgriDataInc.com