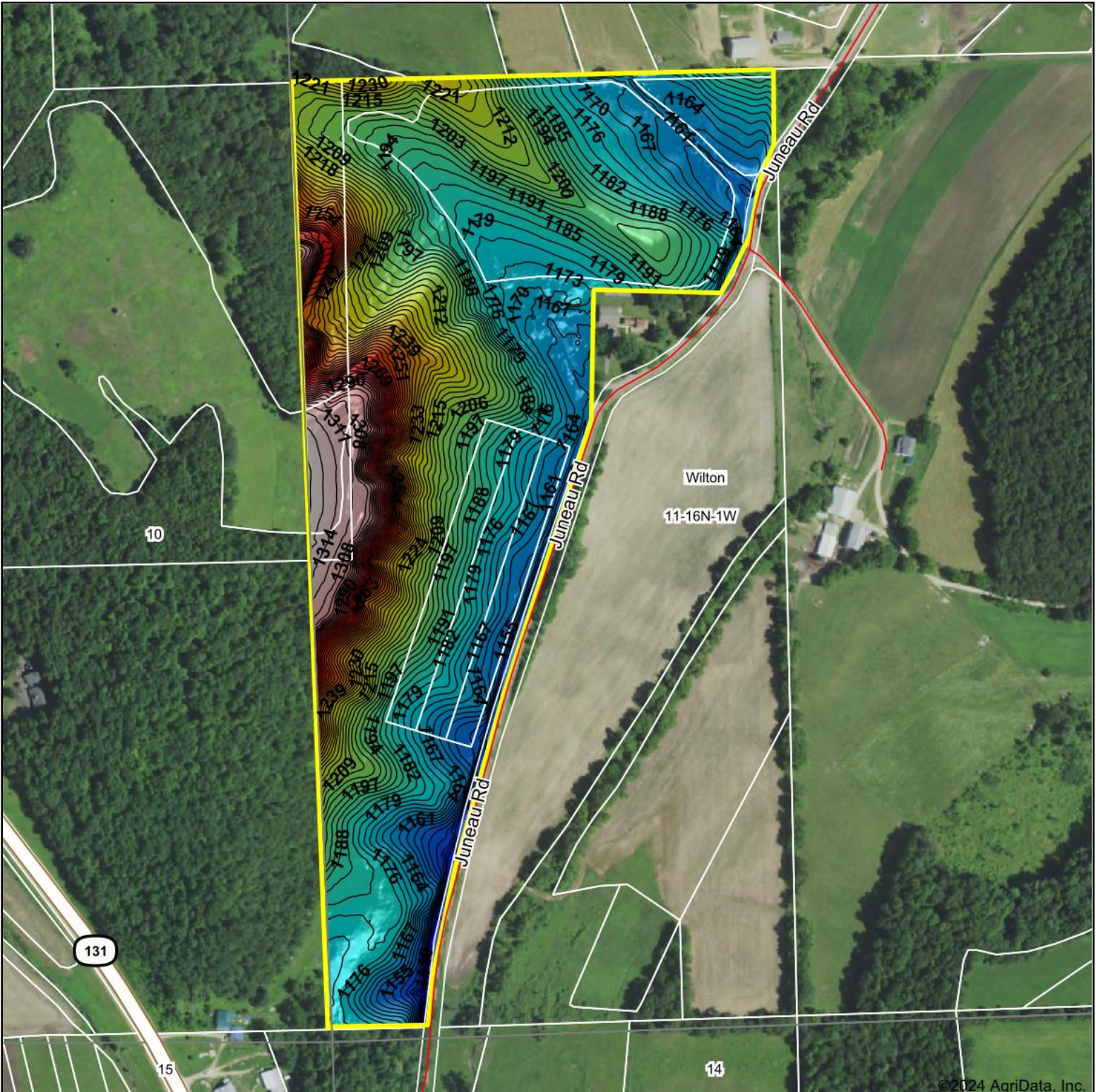
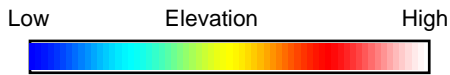


Topography Hillshade



©2024 AgriData, Inc.



Source: USGS 1 meter dem



Interval(ft): 3

Min: 1,129.4

Max: 1,321.1

Range: 191.7

Average: 1,200.7

Standard Deviation: 40.22 ft



4/4/2024

11-16N-1W
Monroe County
Wisconsin

Boundary Center: 43° 52' 29.01, -90° 28' 16.75



Maps Provided By:



© AgriData, Inc. 2023 www.AgriDataInc.com

Field borders provided by Farm Service Agency as of 5/21/2008.