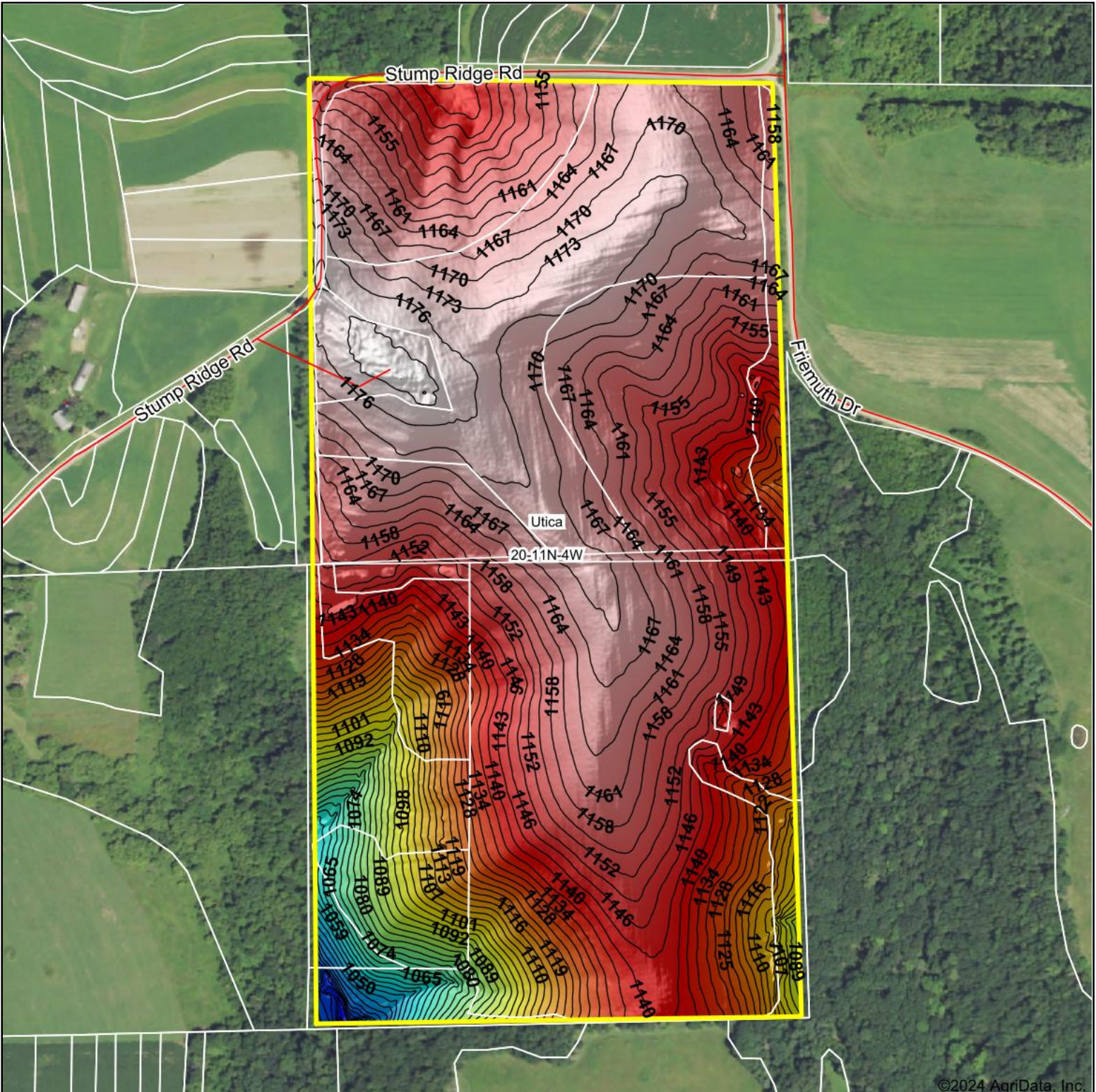
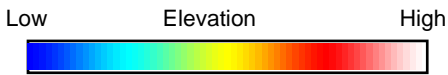


Topography Hillshade



©2024 AgriData, Inc.



Source: USGS 1 meter dem



Interval(ft): 3

Min: 1,016.5

Max: 1,180.7

Range: 164.2

Average: 1,146.3

Standard Deviation: 29 ft



4/4/2024

20-11N-4W
Crawford County
Wisconsin

Boundary Center: 43° 24' 59.57, -90° 52' 29.89



Maps Provided By:



© AgriData, Inc. 2023 www.AgriDataInc.com

Field borders provided by Farm Service Agency as of 5/21/2008.