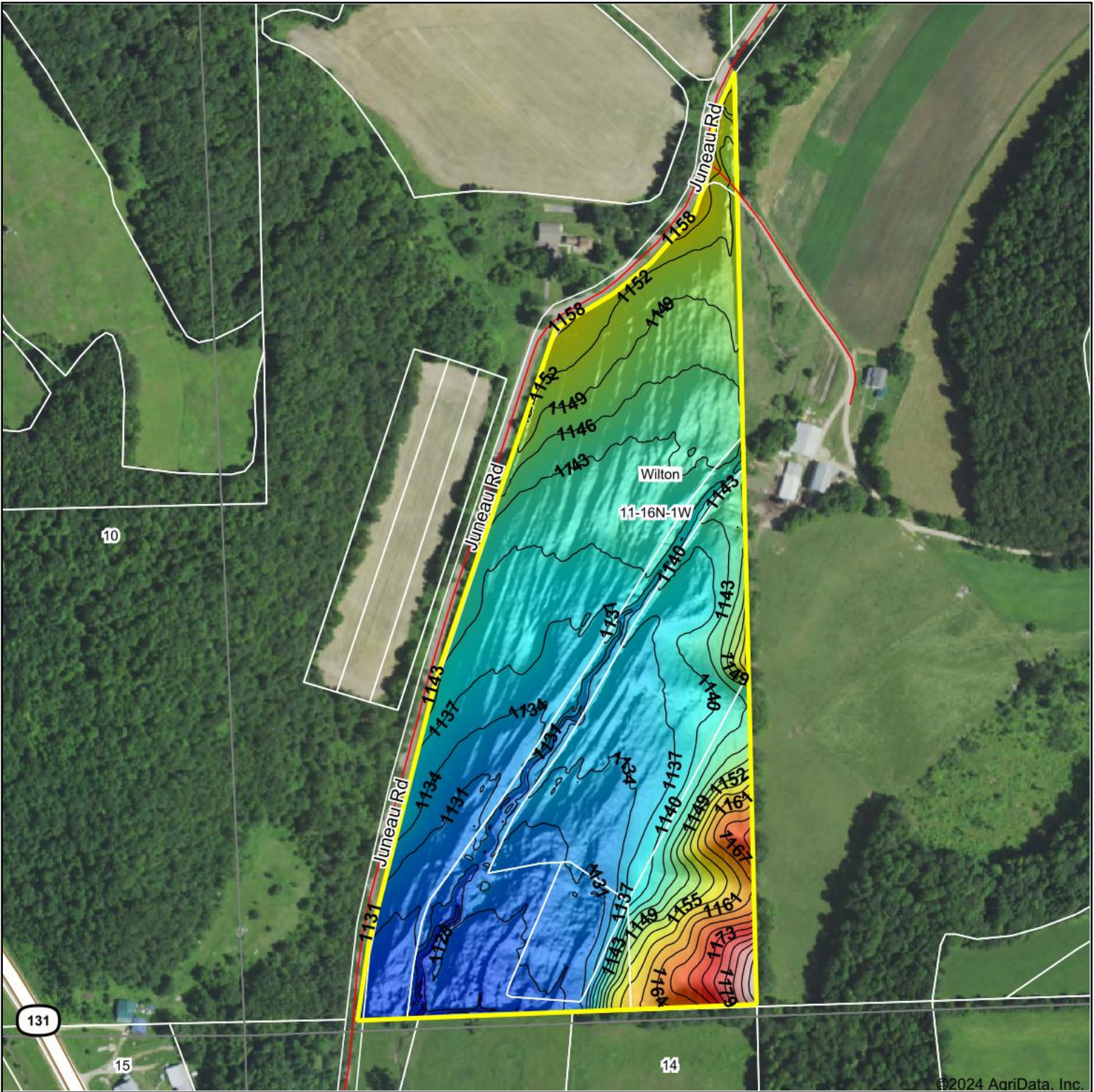
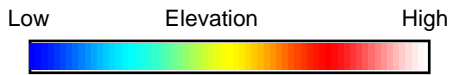


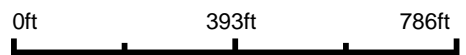
Topography Hillshade



©2024 AgriData, Inc.



Source: USGS 1 meter dem
 Interval(ft): 3
 Min: 1,121.3
 Max: 1,190.2
 Range: 68.9
 Average: 1,140.8
 Standard Deviation: 10.6 ft



11-16N-1W
Monroe County
Wisconsin

Boundary Center: 43° 52' 27.55, -90° 28' 14.58

HIGH POINT
 LAND COMPANY

Maps Provided By:

surety
 CUSTOMIZED ONLINE MAPPING

© AgriData, Inc. 2023 www.AgriDataInc.com

Field borders provided by Farm Service Agency as of 5/21/2008.