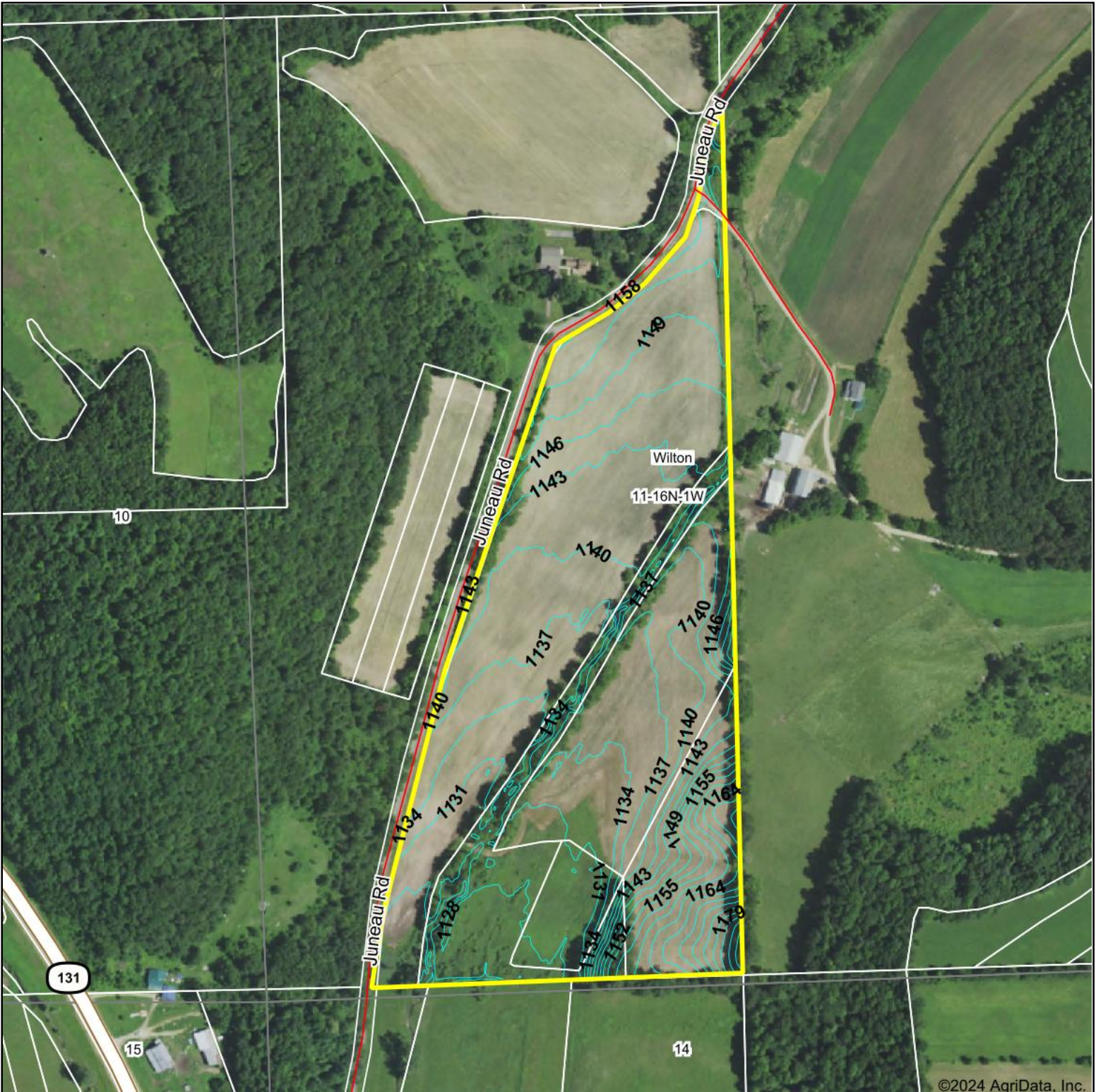


# Topography Contours



©2024 AgriData, Inc.



**HIGH POINT**  
LAND COMPANY

Maps Provided By:



© AgriData, Inc. 2023 www.AgriDataInc.com

Source: USGS 1 meter dem  
 Interval(ft): 3.0  
 Min: 1,121.3  
 Max: 1,190.2  
 Range: 68.9  
 Average: 1,140.8  
 Standard Deviation: 10.6 ft



4/4/2024

**11-16N-1W**  
**Monroe County**  
**Wisconsin**

Boundary Center: 43° 52' 27.55, -90° 28' 14.58

Field borders provided by Farm Service Agency as of 5/21/2008.