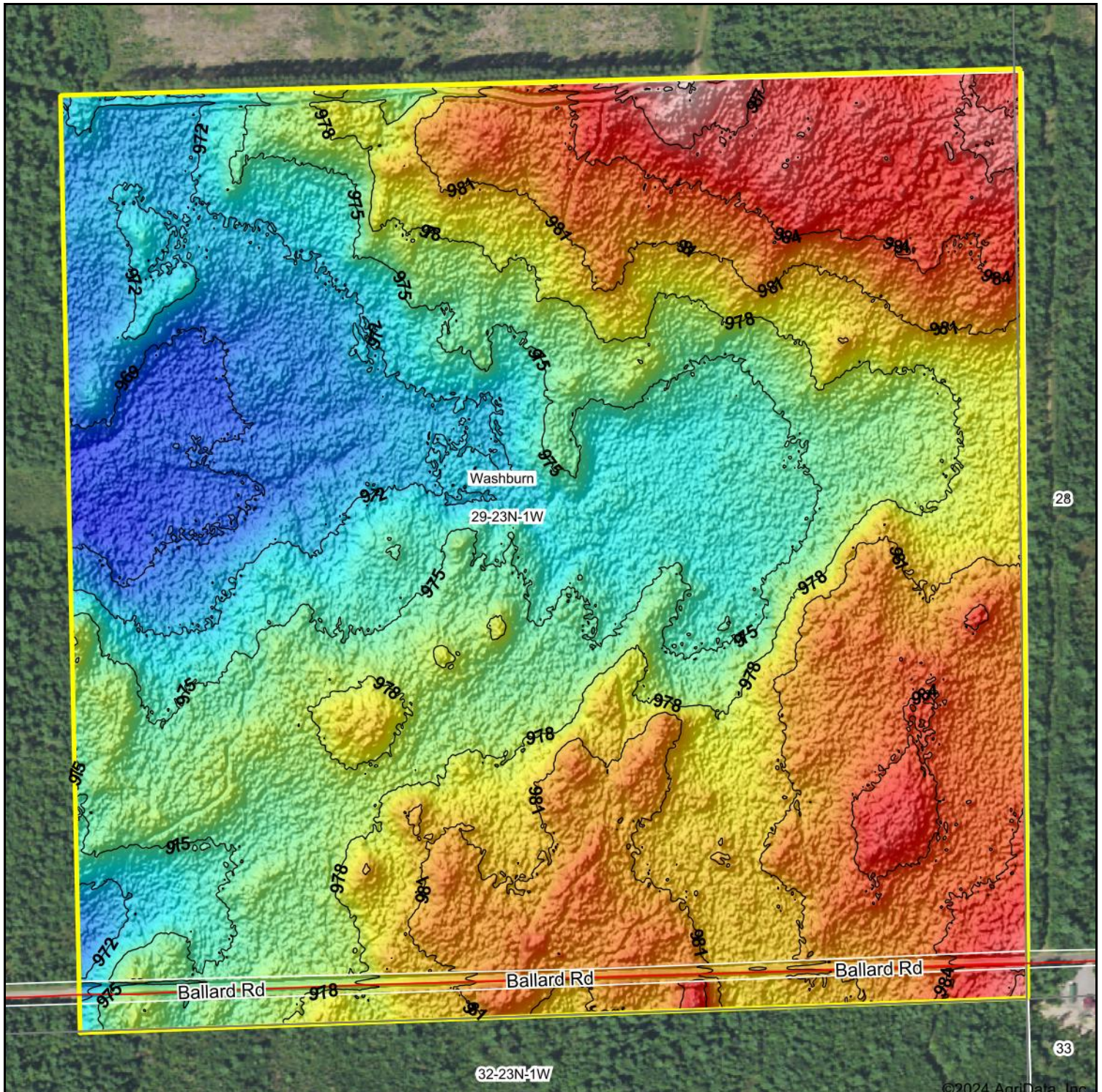


# Topography Hillshade



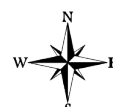
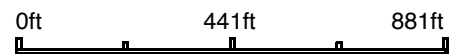
Source: USGS 1 meter dem

0ft 441ft 881ft

Interval(ft): 3

Min: 967.0

Max: 991.2



**29-23N-1W**  
**Clark County**





Range: 24.2  
Average: 977.7

4/3/2024

Wisconsin

Standard Deviation: 4.86 ft

Boundary Center: 44° 26' 25.43, -90° 31' 20.37

© AgriData, Inc. 2023 www.AgriDataInc.com  
Field borders provided by Farm Service Agency as of 5/21/2008.