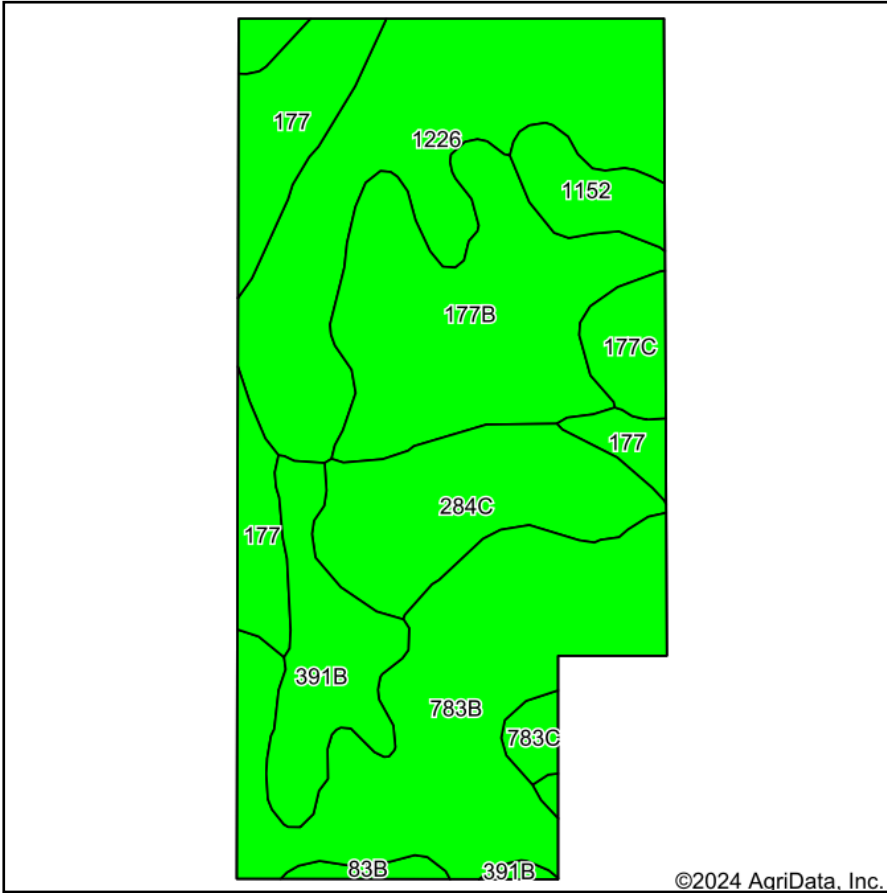
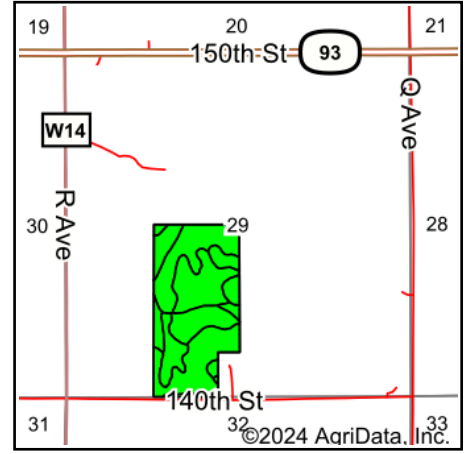


Soils Map



Soils data provided by USDA and NRCS.



State: **Iowa**
 County: **Fayette**
 Location: **29-93N-9W**
 Township: **Center**
 Acres: **73.85**
 Date: **4/16/2024**



Maps Provided By:



Area Symbol: IA065, Soil Area Version: 28

Code	Soil Description	Acres	Percent of field	CSR2 Legend	Non-Irr Class *c	CSR2**	CSR	*n NCCPI Overall	*n NCCPI Corn	*n NCCPI Small Grains	*n NCCPI Soybeans	*n NCCPI Cotton	
783B	Cresco loam, 2 to 5 percent slopes	17.11	23.2%		Ile	73	65	76	76	57	63		
1226	Lawler loam, 0 to 2 percent slopes, rarely flooded	16.50	22.3%		Ils	59	71	83	83	70	60	1	
177B	Saude loam, 2 to 5 percent slopes	13.16	17.8%		Ils	55	59	77	77	67	60		
284C	Flagler sandy loam, 5 to 9 percent slopes	8.25	11.2%		Ille	44	30	65	65	50	36		
177	Saude loam, 0 to 2 percent slopes	7.12	9.6%		Ils	60	64	79	79	68	62		
391B	Clyde-Floyd complex, 1 to 4 percent slopes	5.82	7.9%		Ilw	87	73	89	87	72	86		
1152	Marshan clay loam, 0 to 2 percent slopes, rarely flooded	2.43	3.3%		Ilw	54	67	81	81	65	60		
177C	Saude loam, 5 to 9 percent slopes	2.06	2.8%		Ille	50	39	75	75	65	57		
783C	Cresco loam, 5 to 9 percent slopes	0.83	1.1%		Ille	79	45	81	81	71	81		
83B	Kenyon loam, 2 to 5 percent slopes	0.57	0.8%		Ile	90	85	89	89	71	77		
Weighted Average						2.15	62.2	61.2	*n 78.1	*n 78	*n 63.9	*n 60.5	*n 0.2

**IA has updated the CSR values for each county to CSR2.

*n: The aggregation method is "Weighted Average using all components"

*c: Using Capabilities Class Dominant Condition Aggregation Method

Soils data provided by USDA and NRCS.