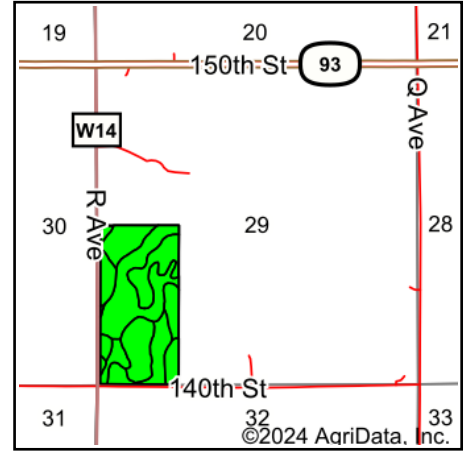
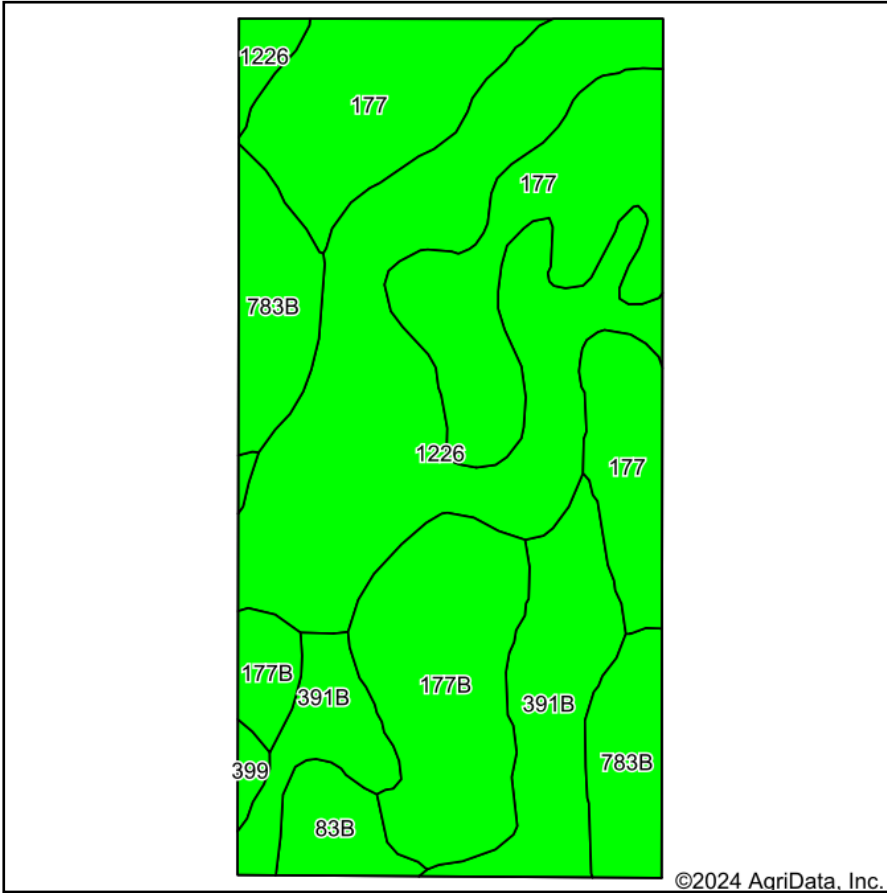


Soils Map



State: **Iowa**
 County: **Fayette**
 Location: **29-93N-9W**
 Township: **Center**
 Acres: **77**
 Date: **4/16/2024**



Maps Provided By:
surety
 CUSTOMIZED ONLINE MAPPING
 © AgriData, Inc. 2023 www.AgriDataInc.com



Soils data provided by USDA and NRCS.

Area Symbol: IA065, Soil Area Version: 28

Code	Soil Description	Acres	Percent of field	CSR2 Legend	Non-Irr Class *c	CSR2**	CSR	*n NCCPI Overall	*n NCCPI Corn	*n NCCPI Small Grains	*n NCCPI Soybeans	*n NCCPI Cotton	
1226	Lawler loam, 0 to 2 percent slopes, rarely flooded	23.86	31.0%		lls	59	71	83	83	70	60	1	
177	Saude loam, 0 to 2 percent slopes	21.33	27.7%		lls	60	64	79	79	68	62		
177B	Saude loam, 2 to 5 percent slopes	11.28	14.6%		lls	55	59	77	77	67	60		
391B	Clyde-Floyd complex, 1 to 4 percent slopes	10.23	13.3%		llw	87	73	89	87	72	86		
783B	Cresco loam, 2 to 5 percent slopes	7.46	9.7%		lle	73	65	76	76	57	63		
83B	Kenyon loam, 2 to 5 percent slopes	2.38	3.1%		lle	90	85	89	89	71	77		
399	Readlyn silt loam, 1 to 3 percent slopes	0.46	0.6%		lw	91	89	80	80	65	68		
Weighted Average						1.99	64.9	67.5	*n 81.3	*n 81	*n 68	*n 64.9	*n 0.3

**IA has updated the CSR values for each county to CSR2.

*n: The aggregation method is "Weighted Average using all components"

*c: Using Capabilities Class Dominant Condition Aggregation Method

Soils data provided by USDA and NRCS.