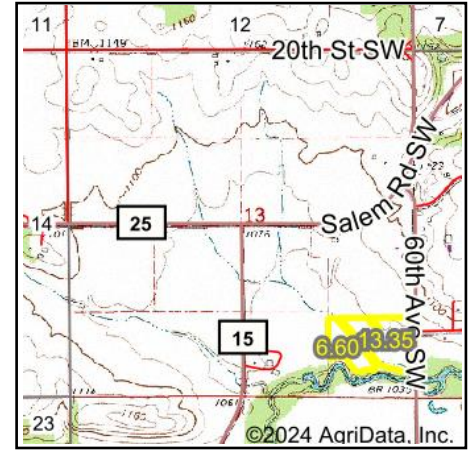
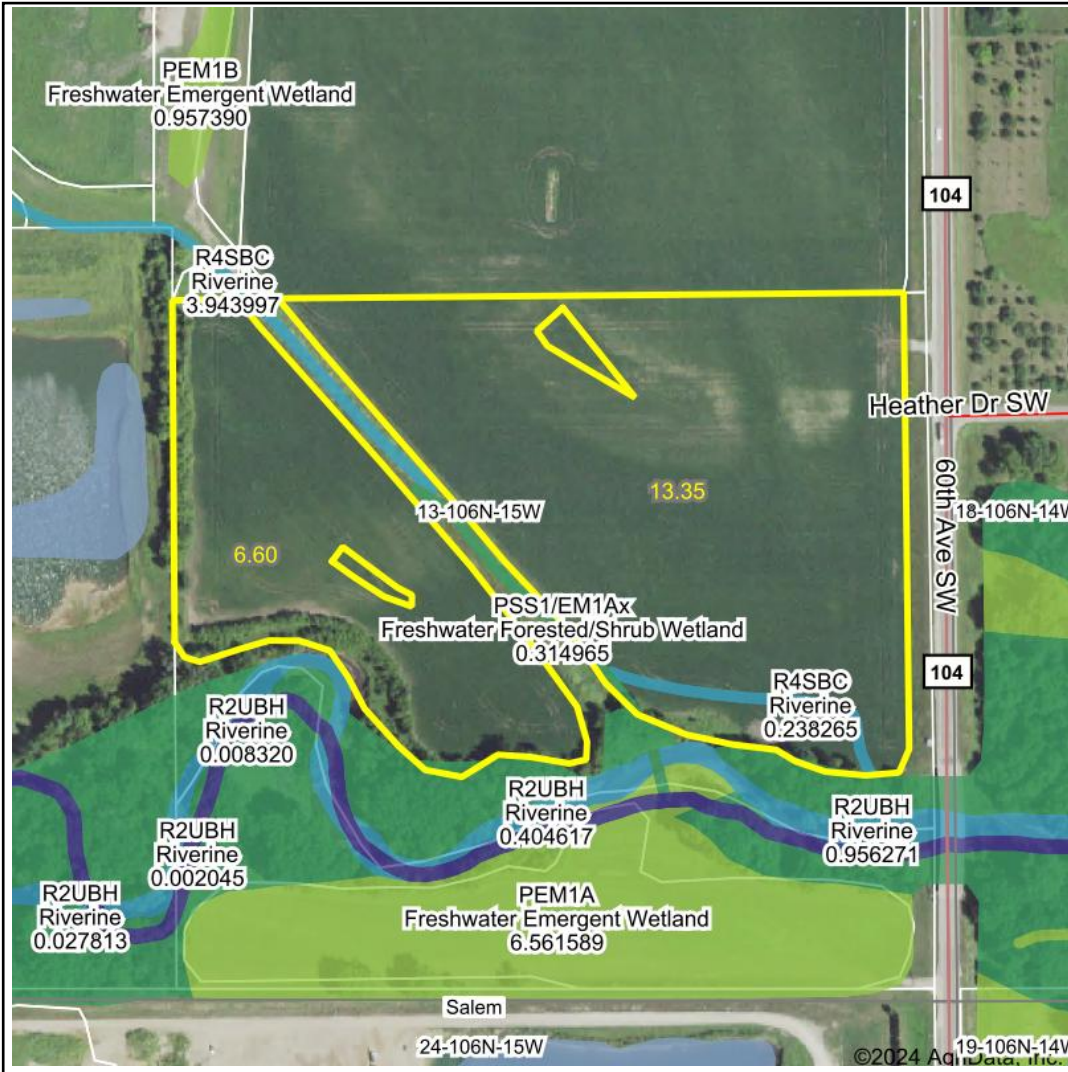


Wetlands Map



State: Minnesota
Location: 13-106N-15W
County: Olmsted
Township: Salem
Date: 1/29/2024



Maps Provided By:



© AgriData, Inc. 2023 www.AgriDataInc.com



0ft 379ft 758ft

Classification Code	Type	Acres
R4SBC	Riverine	0.24
PFO1A	Freshwater Forested/Shrub Wetland	0.08
PSS1/EM1Ax	Freshwater Forested/Shrub Wetland	0.06
R2UBH	Riverine	0.00
Total Acres		0.38

Data Source: National Wetlands Inventory website. U.S. DoI, Fish and Wildlife Service, Washington, D.C. <http://www.fws.gov/wetlands/>