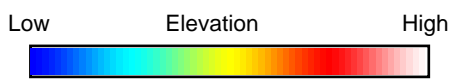
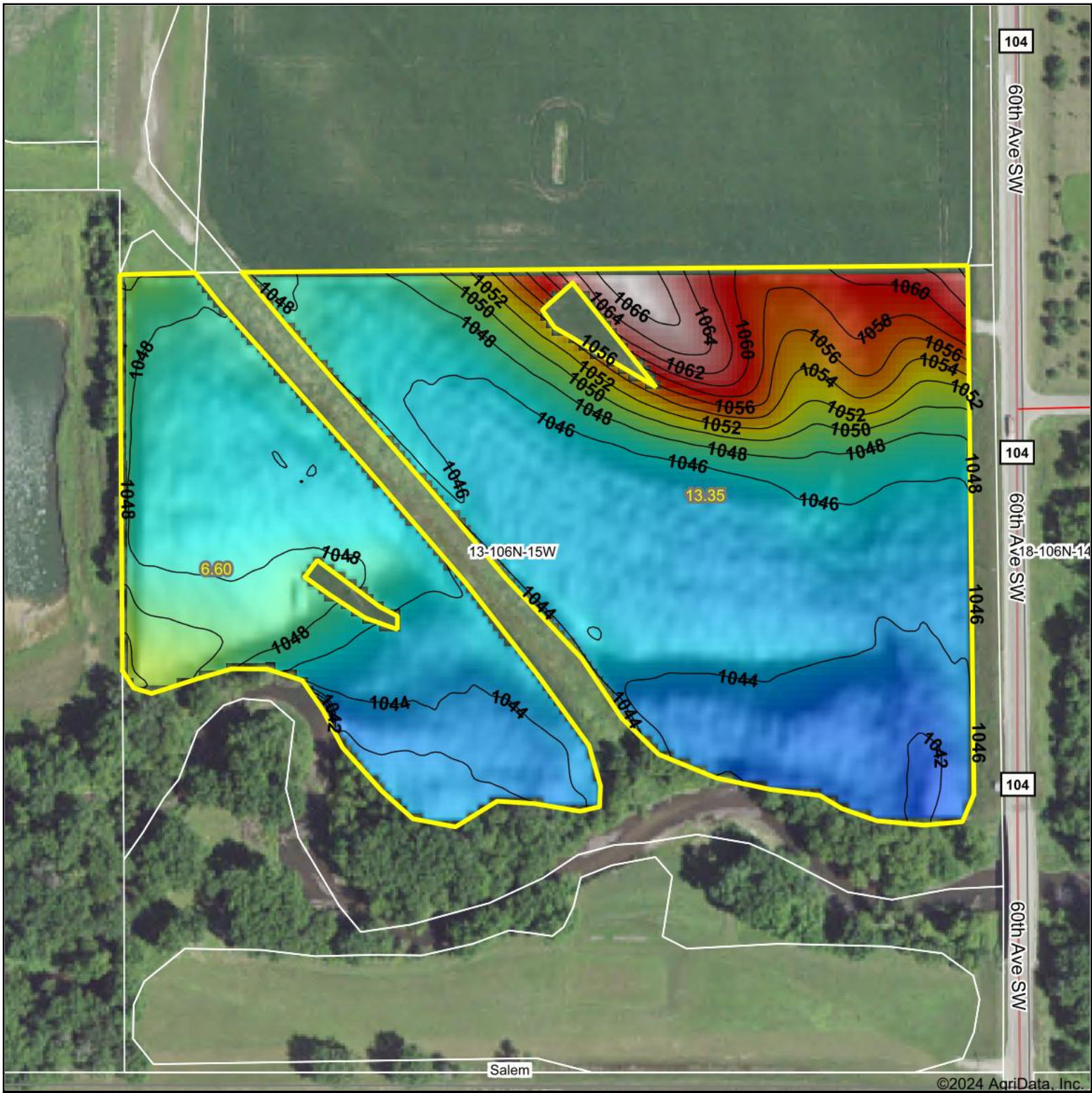


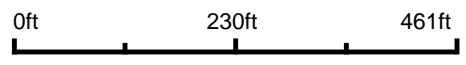
# Topography Hillshade




**HIGH POINT**  
 LAND COMPANY  
 Maps Provided By:  

**surety**<sup>®</sup>  
 CUSTOMIZED ONLINE MAPPING  
© AgriData, Inc. 2023 www.AgriDataInc.com

Source: USGS 3 meter dem  
 Interval(ft): 2  
 Min: 1,039.6  
 Max: 1,067.2  
 Range: 27.6  
 Average: 1,047.8  
 Standard Deviation: 5.15 ft



**13-106N-15W**  
**Olmsted County**  
**Minnesota**

Boundary Center: 43° 58' 50.08, -92° 33' 38.83

Field borders provided by Farm Service Agency as of 5/21/2008.