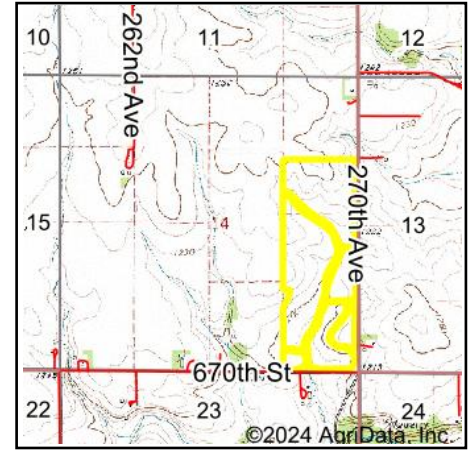
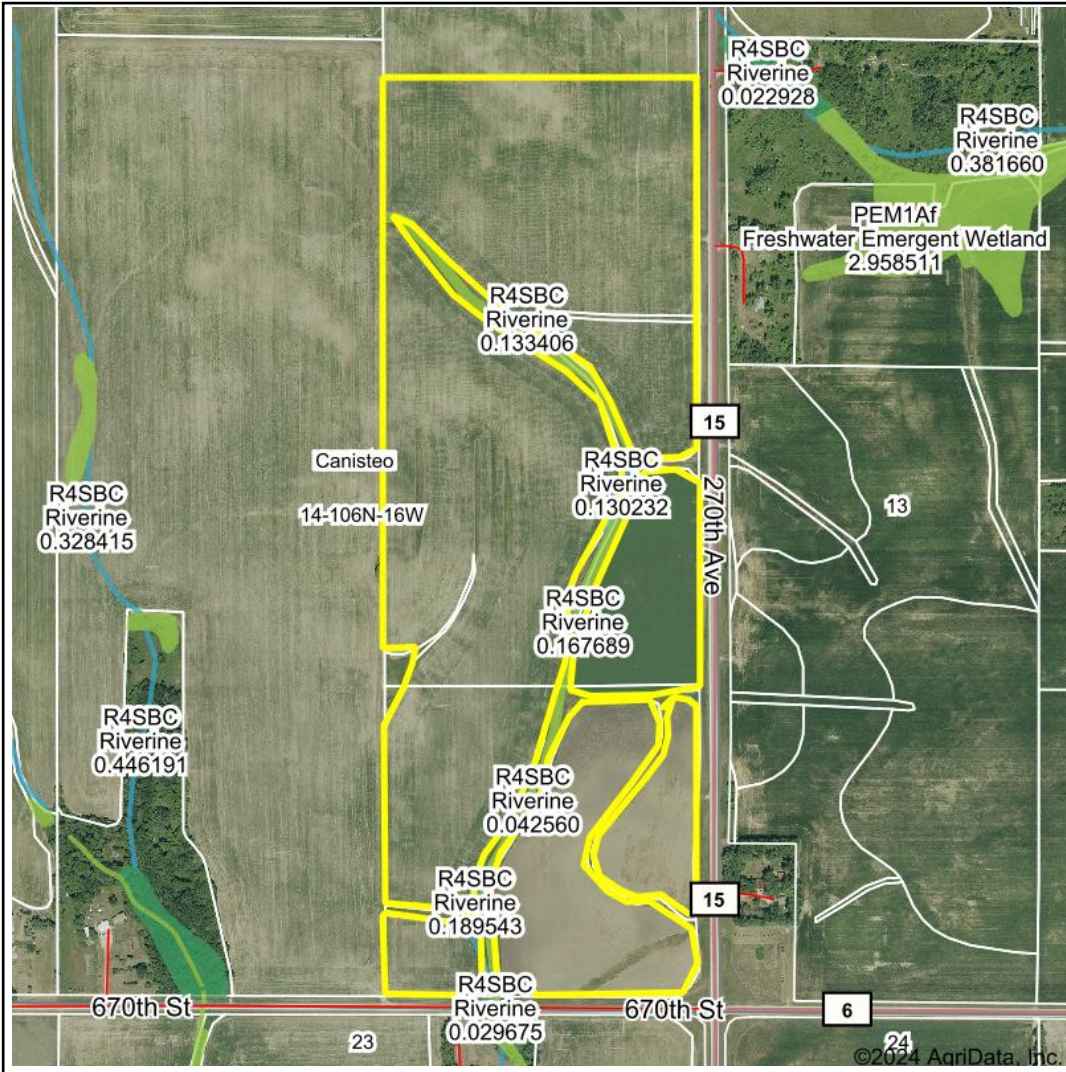


Wetlands Map



State: Minnesota
Location: 14-106N-16W
County: Dodge
Township: Canisteo
Date: 2/29/2024



Maps Provided By:

 CUSTOMIZED ONLINE MAPPING
 © AgriData, Inc. 2023 www.AgriDataInc.com



0ft 893ft 1786ft

| Classification Code | Type | Acres |
|---------------------|-----------------------------|-------|
| R4SBC | Riverine | 0.33 |
| PEM1B | Freshwater Emergent Wetland | 0.29 |
| Total Acres | | 0.62 |

Data Source: National Wetlands Inventory website. U.S. Dol, Fish and Wildlife Service, Washington, D.C. <http://www.fws.gov/wetlands/>