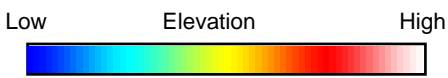
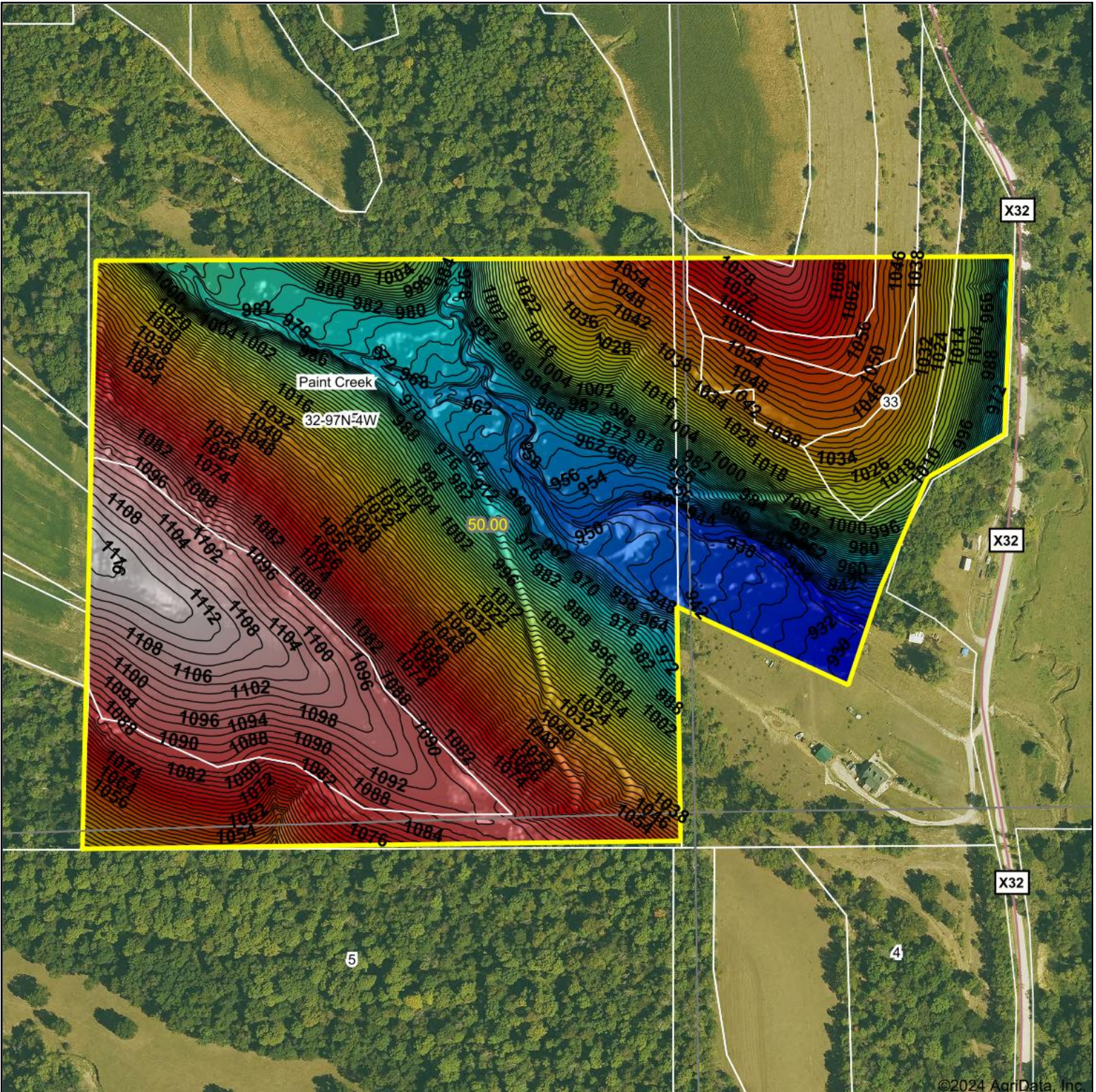


Topography Hillshade



Source: USGS 1 meter dem

Interval(ft): 2

Min: 927.3

Max: 1,117.4

Range: 190.1

Average: 1,032.1

Standard Deviation: 49.84 ft



3/22/2024

32-97N-4W
Allamakee County
Iowa

Boundary Center: 43° 10' 10.25, -91° 19' 50.08



Maps Provided By:



© AgriData, Inc. 2023 www.AgriDataInc.com

Field borders provided by Farm Service Agency as of 5/21/2008.

©2024 AgriData, Inc.