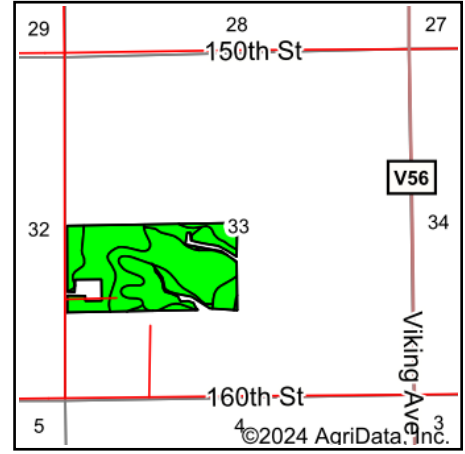
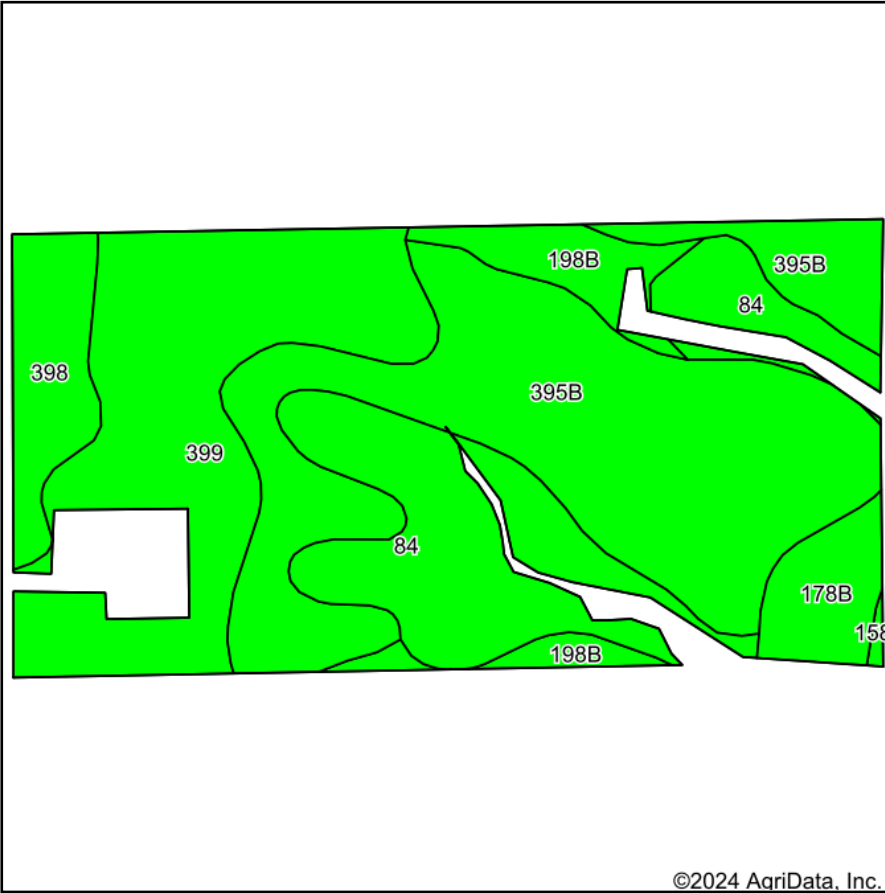


# Soils Map



State: **Iowa**  
 County: **Bremer**  
 Location: **33-93N-11W**  
 Township: **Sumner No. 2**  
 Acres: **73.37**  
 Date: **3/28/2024**



Maps Provided By:



Soils data provided by USDA and NRCS.

©2024 AgriData, Inc.

© AgriData, Inc. 2023

www.AgriDataInc.com

Area Symbol: IA017, Soil Area Version: 28

Code	Soil Description	Acres	Percent of field	CSR2 Legend	Non-Irr Class *c	CSR2**	CSR	*n NCCPI Overall	*n NCCPI Corn	*n NCCPI Small Grains	*n NCCPI Soybeans	*n NCCPI Cotton	
395B	Marquis loam, 2 to 5 percent slopes	29.49	40.2%		Ile	91	89	90	90	74	80		
399	Readlyn silt loam, 1 to 3 percent slopes	17.95	24.5%		Iw	91	91	80	80	65	68		
84	Clyde silty clay loam, 0 to 3 percent slopes	14.33	19.5%		Ilw	88	76	90	90	76	85		
398	Tripoli clay loam, 0 to 2 percent slopes	4.51	6.1%		Ilw	82	81	68	68	55	63		
198B	Floyd loam, 1 to 4 percent slopes	3.83	5.2%		Ilw	89	80	88	83	66	88		
178B	Waukee loam, 2 to 5 percent slopes, rarely flooded	3.11	4.2%		Ils	64	74	82	82	70	69	9	
1585	Spillville-Coland-Shandep complex, 0 to 2 percent slopes, frequently flooded	0.15	0.2%		Vw	5	5	13	6	13	2		
<b>Weighted Average</b>						<b>1.76</b>	<b>88.4</b>	<b>85.2</b>	<b>*n 85.6</b>	<b>*n 85.3</b>	<b>*n 70.3</b>	<b>*n 76.8</b>	<b>*n 0.4</b>

\*\*IA has updated the CSR values for each county to CSR2.

\*n: The aggregation method is "Weighted Average using all components"

\*c: Using Capabilities Class Dominant Condition Aggregation Method

Soils data provided by USDA and NRCS.