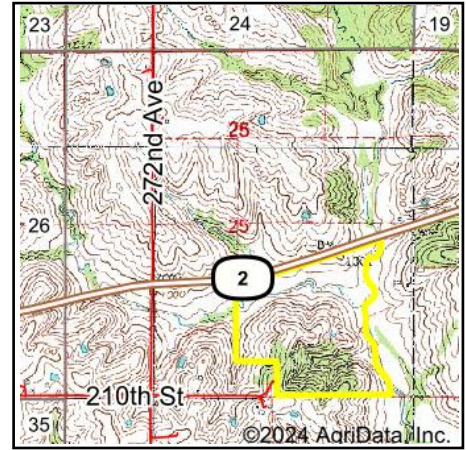
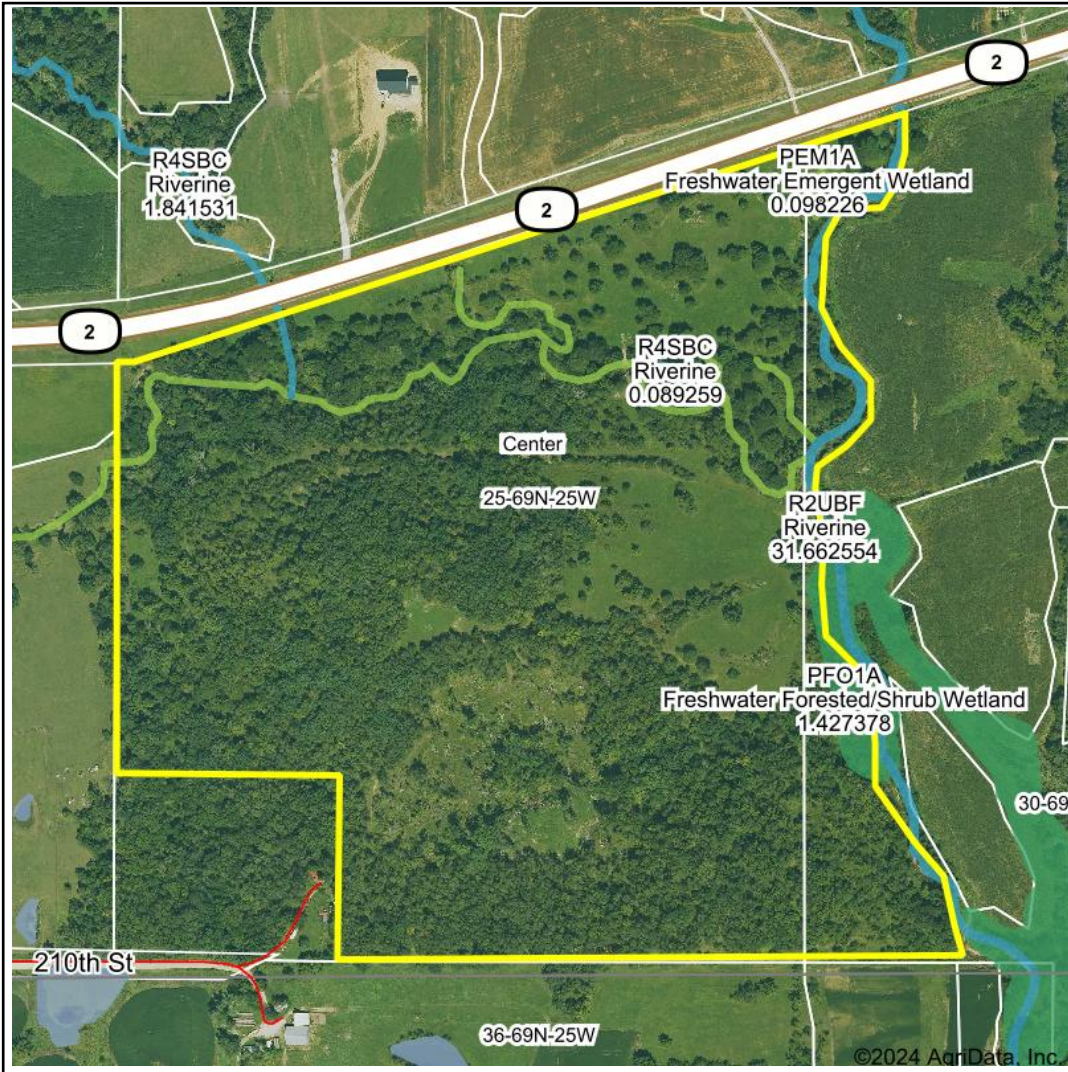


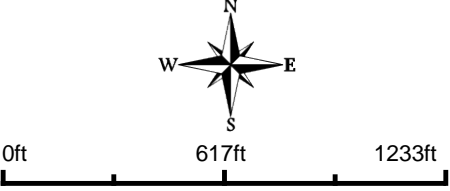
Wetlands Map



State: **Iowa**
 Location: **25-69N-25W**
 County: **Decatur**
 Township: **Center**
 Date: **2/27/2024**


HIGH POINT
 LAND COMPANY
 Maps Provided By:

surety
 CUSTOMIZED ONLINE MAPPING
© AgriData, Inc. 2023 www.AgriDataInc.com



Classification Code	Type	Acres
PEM1C	Freshwater Emergent Wetland	1.53
PFO1A	Freshwater Forested/Shrub Wetland	0.97
R2UBF	Riverine	0.88
PEM1A	Freshwater Emergent Wetland	0.31
R4SBC	Riverine	0.20
Total Acres		3.89

Data Source: National Wetlands Inventory website. U.S. DoI, Fish and Wildlife Service, Washington, D.C. <http://www.fws.gov/wetlands/>

Field borders provided by Farm Service Agency as of 5/21/2008.