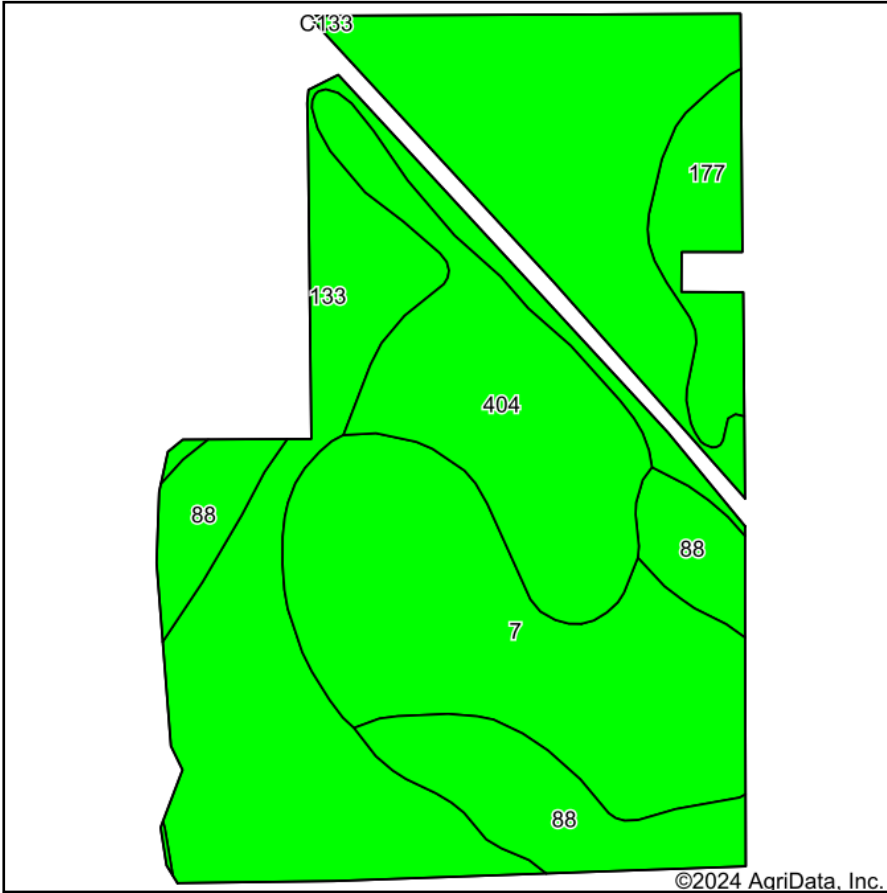
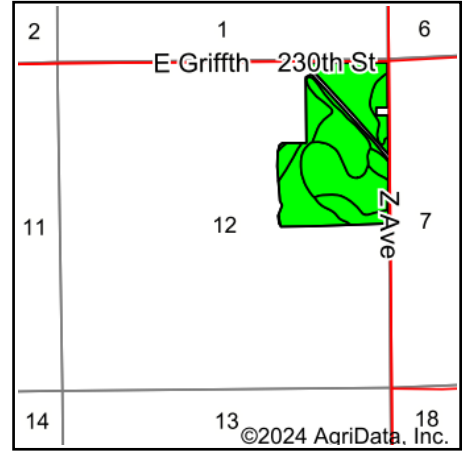


# Soils Map



Soils data provided by USDA and NRCS.



State: **Iowa**  
 County: **Grundy**  
 Location: **12-87N-15W**  
 Township: **Black Hawk**  
 Acres: **88.13**  
 Date: **2/8/2024**



Maps Provided By:



Area Symbol: IA075, Soil Area Version: 29

Code	Soil Description	Acres	Percent of field	CSR2 Legend	Non-Irr Class *c	CSR2**	*n NCCPI Overall	*n NCCPI Corn	*n NCCPI Small Grains	*n NCCPI Soybeans	
133	Colo silty clay loam, 0 to 2 percent slopes, occasionally flooded	37.96	43.1%		llw	78	77	77	34	75	
7	Wiota silt loam, 0 to 2 percent slopes, rarely flooded	20.62	23.4%		lw	100	93	93	76	82	
404	Thorp silt loam, 0 to 2 percent slopes	13.64	15.5%		llw	62	90	77	25	90	
88	Nevin silty clay loam, 0 to 2 percent slopes	11.36	12.9%		lw	95	98	98	78	87	
177	Saude loam, 0 to 2 percent slopes	4.45	5.0%		lls	60	79	79	68	62	
C133	Colo silty clay loam, channeled, 0 to 2 percent slopes, frequently flooded	0.10	0.1%		llw	5	9	5	9	2	
<b>Weighted Average</b>						<b>1.64</b>	<b>81.9</b>	<b>*n 85.5</b>	<b>*n 83.5</b>	<b>*n 49.8</b>	<b>*n 79.8</b>

\*\*IA has updated the CSR values for each county to CSR2.

\*n: The aggregation method is "Weighted Average using all components"

\*\*IA has updated the CSR values for each county to CSR2.\*c: Using Capabilities Class Dominant Condition Aggregation Method