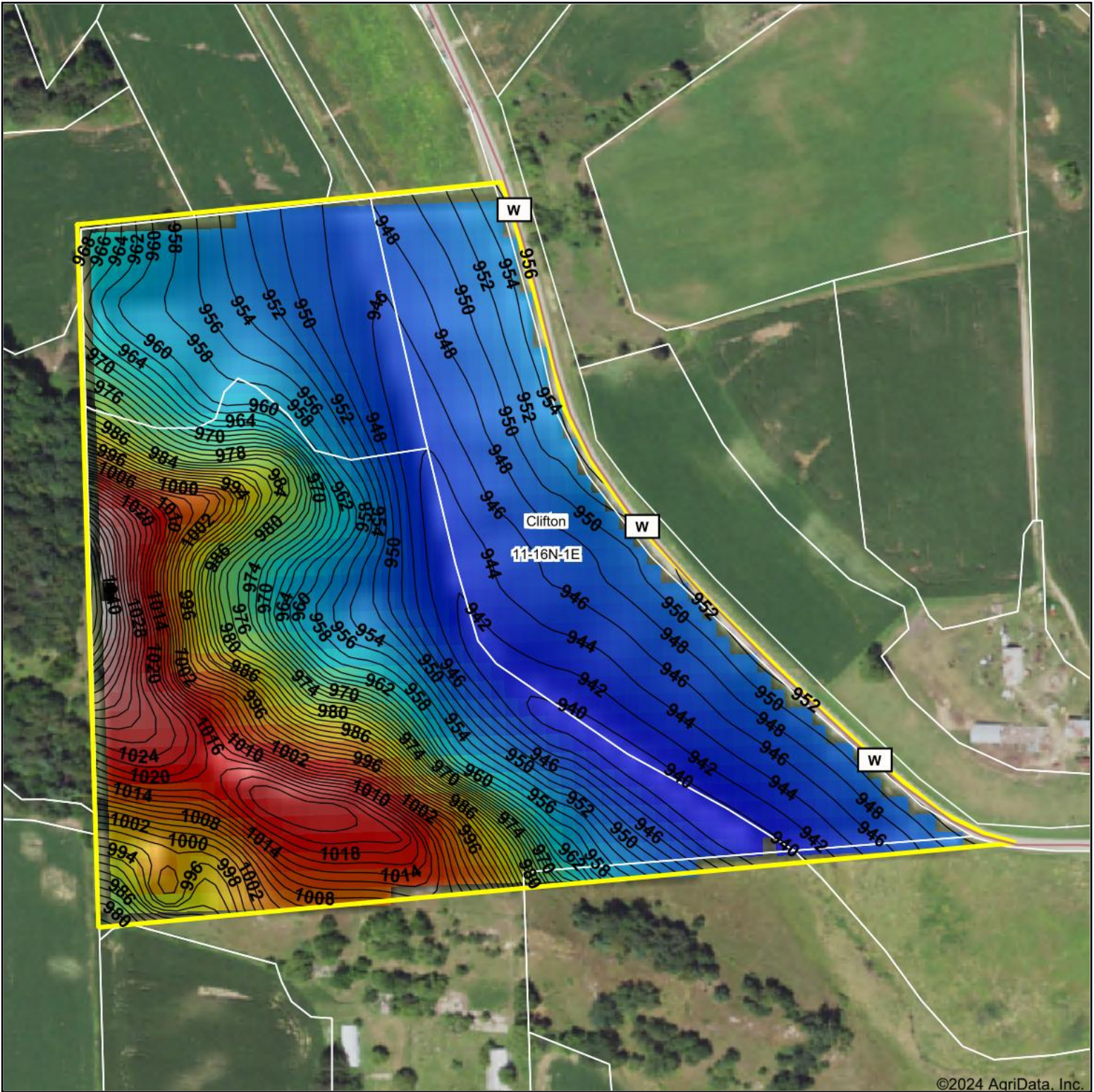


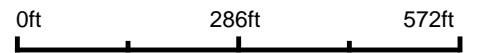
Topography Hillshade



©2024 AgriData, Inc.



Source: USGS 10 meter dem
 Interval(ft): 2
 Min: 938.6
 Max: 1,041.5
 Range: 102.9
 Average: 967.6
 Standard Deviation: 26.71 ft



11-16N-1E
Monroe County
Wisconsin

Boundary Center: 43° 52' 49.07, -90° 20' 46.27



Maps Provided By:



© AgriData, Inc. 2023 www.AgriDataInc.com

Field borders provided by Farm Service Agency as of 5/21/2008.