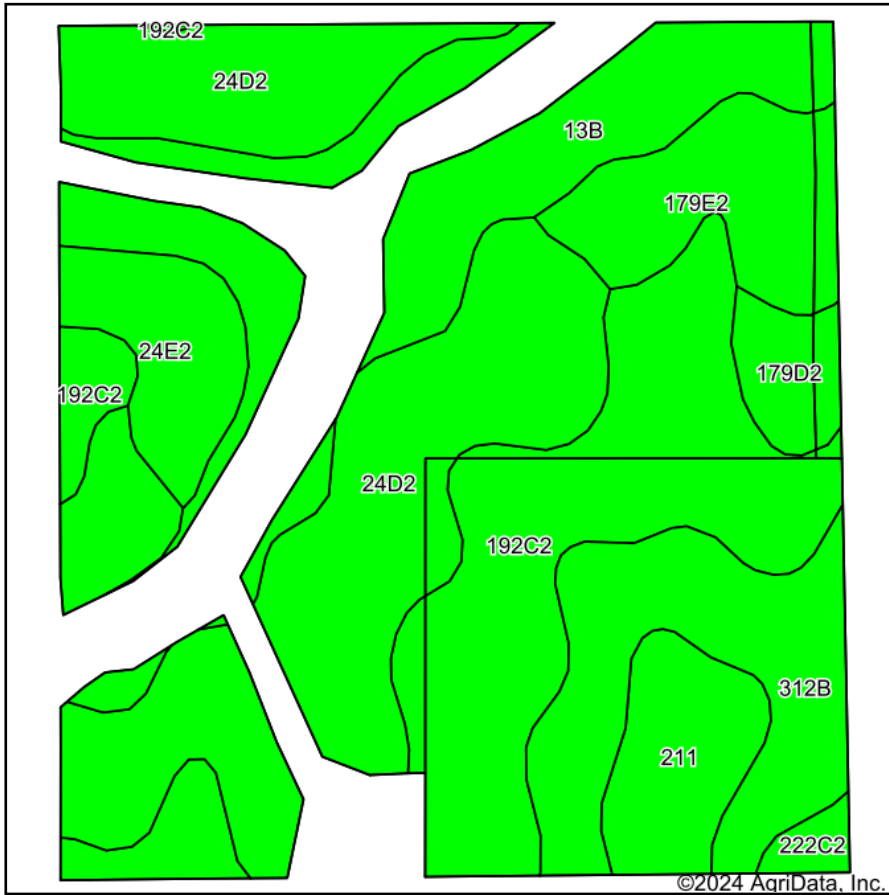
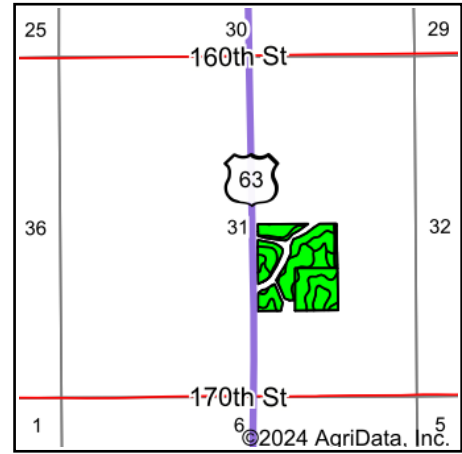


Soils Map



Soils data provided by USDA and NRCS.



State: **Iowa**
 County: **Davis**
 Location: **31-70N-13W**
 Township: **Lick Creek**
 Acres: **32.91**
 Date: **2/12/2024**



Maps Provided By:



Area Symbol: IA051, Soil Area Version: 30

Code	Soil Description	Acres	Percent of field	CSR2 Legend	Non-Irr Class *c	CSR2**	*n NCCPI Overall	*n NCCPI Corn	*n NCCPI Small Grains	*n NCCPI Soybeans	
24D2	Shelby loam, 9 to 14 percent slopes, moderately eroded	10.00	30.4%		Ille	45	68	68	56	53	
192C2	Adair clay loam, heavy till, 5 to 9 percent slopes, moderately eroded	7.31	22.2%		Ille	29	66	66	55	46	
13B	Olmitz-Vesser-Zook complex, 0 to 5 percent slopes	5.26	16.0%		Ilw	74	83	80	69	74	
312B	Seymour silt loam, 2 to 5 percent slopes	3.70	11.2%		Ille	64	70	70	70	65	
179E2	Gara loam, 14 to 18 percent slopes, moderately eroded	2.31	7.0%		Vle	24	62	62	49	44	
211	Edina silt loam, 0 to 1 percent slopes	1.65	5.0%		Illw	59	70	70	68	64	
24E2	Shelby loam, 14 to 18 percent slopes, moderately eroded	1.62	4.9%		IVe	33	68	68	53	50	
179D2	Gara loam, 9 to 14 percent slopes, moderately eroded	0.80	2.4%		IVe	44	73	72	57	53	
222C2	Clarinda silty clay loam, 5 to 9 percent slopes, moderately eroded	0.26	0.8%		IVw	28	54	54	46	42	
Weighted Average						3.13	46.7	*n 69.9	*n 69.4	*n 59.3	*n 55.8

**IA has updated the CSR values for each county to CSR2.

*n: The aggregation method is "Weighted Average using all components"

**IA has updated the CSR values for each county to CSR2.*c: Using Capabilities Class Dominant Condition Aggregation Method

Soils data provided by USDA and NRCS.