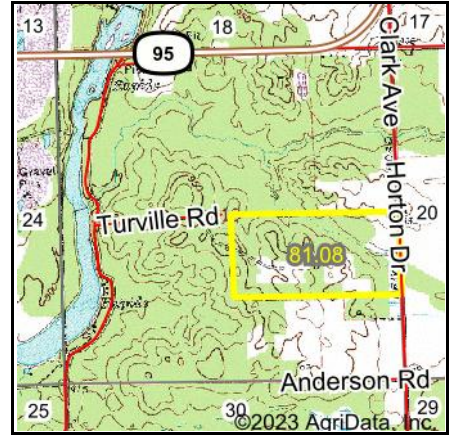
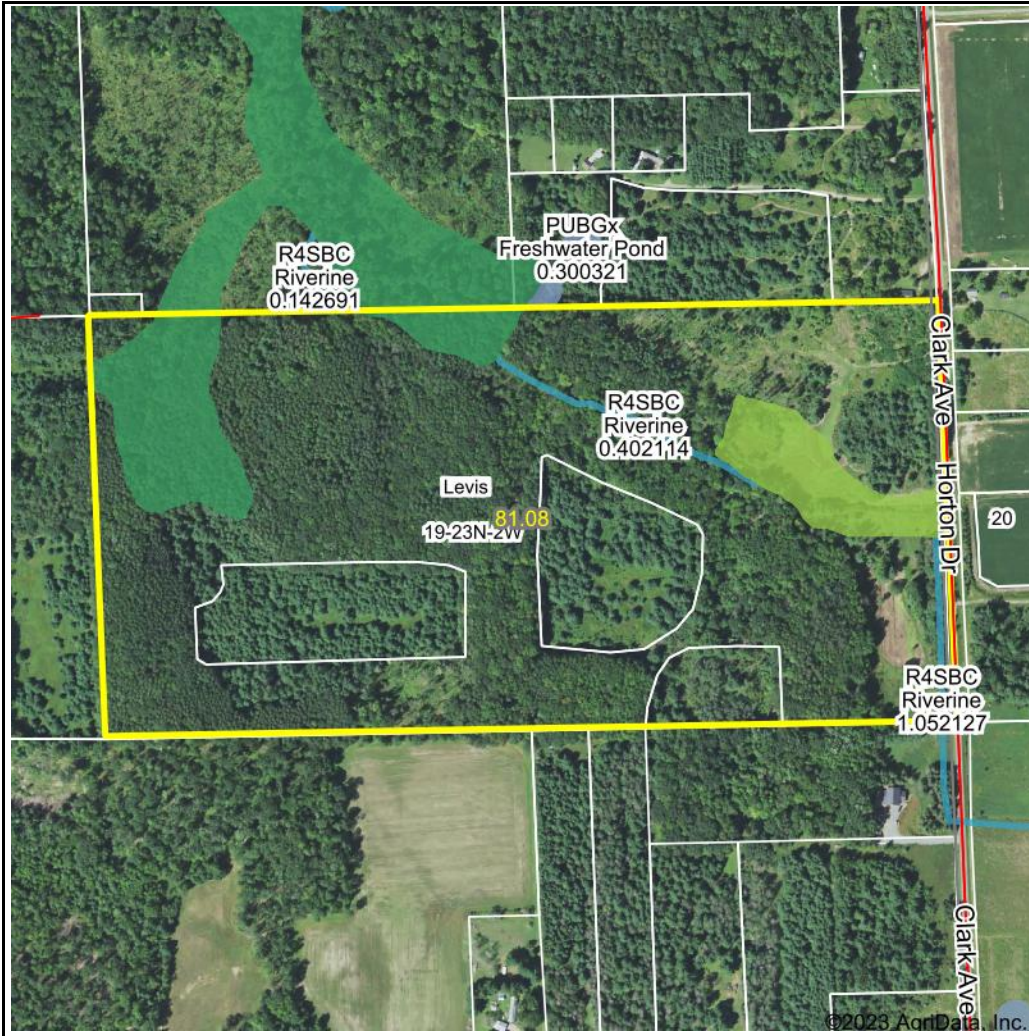


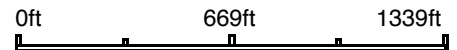
Wetlands Map



State: **Wisconsin**
 Location: **19-23N-2W**
 County: **Clark**
 Township: **Levis**
 Date: **12/20/2023**


HIGH POINT
 LAND COMPANY
 Maps Provided By:

surety[®]
 CUSTOMIZED ONLINE MAPPING
© AgriData, Inc. 2023 www.AgriDataInc.com



Classification Code	Type	Acres
PFO1C	Freshwater Forested/Shrub Wetland	5.86
PEM1C	Freshwater Emergent Wetland	3.42
R4SBC	Riverine	0.66
PFO1/SS1C	Freshwater Forested/Shrub Wetland	0.11
PUBGx	Freshwater Pond	0.01
Total Acres		10.06

Data Source: National Wetlands Inventory website. U.S. DoI, Fish and Wildlife Service, Washington, D.C. <http://www.fws.gov/wetlands/>

Field borders provided by Farm Service Agency as of 5/21/2008.