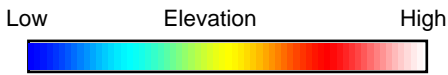
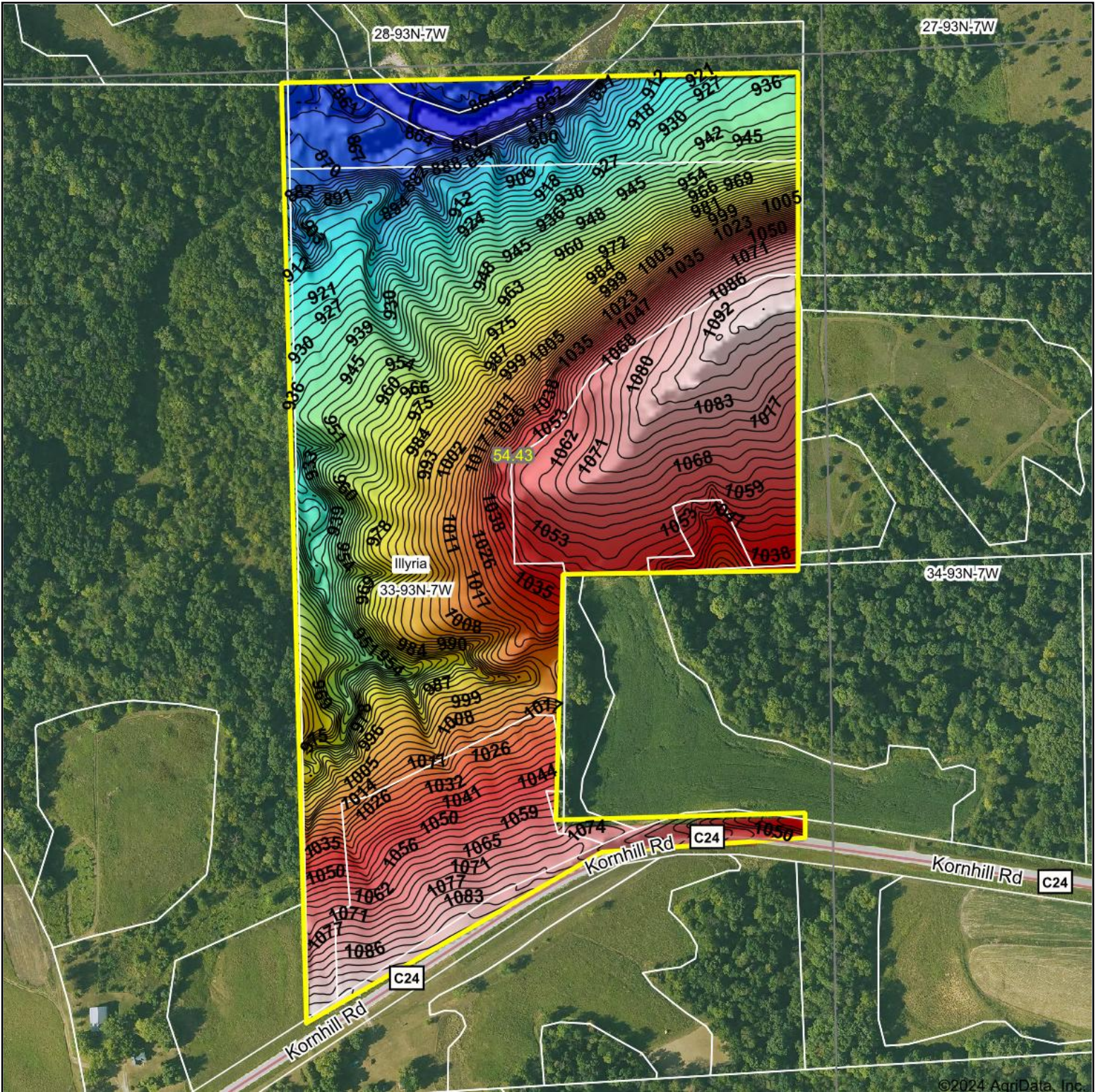


Topography Hillshade



Source: USGS 3 meter dem
 Interval(ft): 3
 Min: 850.3
 Max: 1,103.0
 Range: 252.7
 Average: 992.4
 Standard Deviation: 66.83 ft



33-93N-7W
Fayette County
Iowa

Boundary Center: 42° 49' 43.75, -91° 40' 10.32



Maps Provided By:



© AgriData, Inc. 2023 www.AgriDataInc.com

Field borders provided by Farm Service Agency as of 5/21/2008.

©2024 AgriData, Inc.