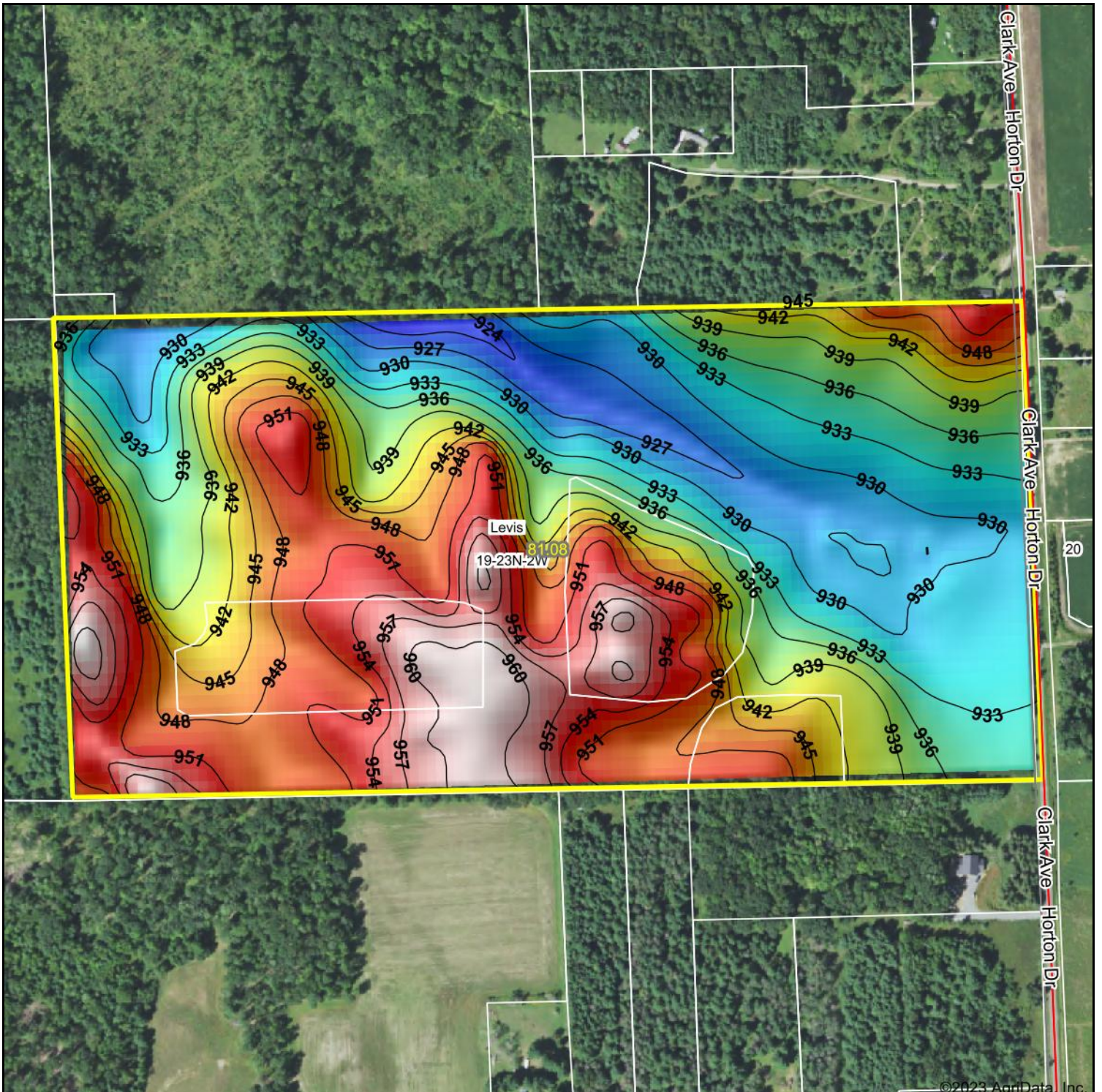


# Topography Hillshade



Source: USGS 10 meter dem



Interval(ft): 3

Min: 922.6

Max: 961.9



**19-23N-2W**  
**Clark County**





Range: 39.3  
Average: 942.0

12/20/2023

Wisconsin

Standard Deviation: 10.04 ft

Boundary Center: 44° 27' 23.68, -90° 39' 54.22

© AgriData, Inc. 2023 www.AgriDataInc.com  
Field borders provided by Farm Service Agency as of 5/21/2008.