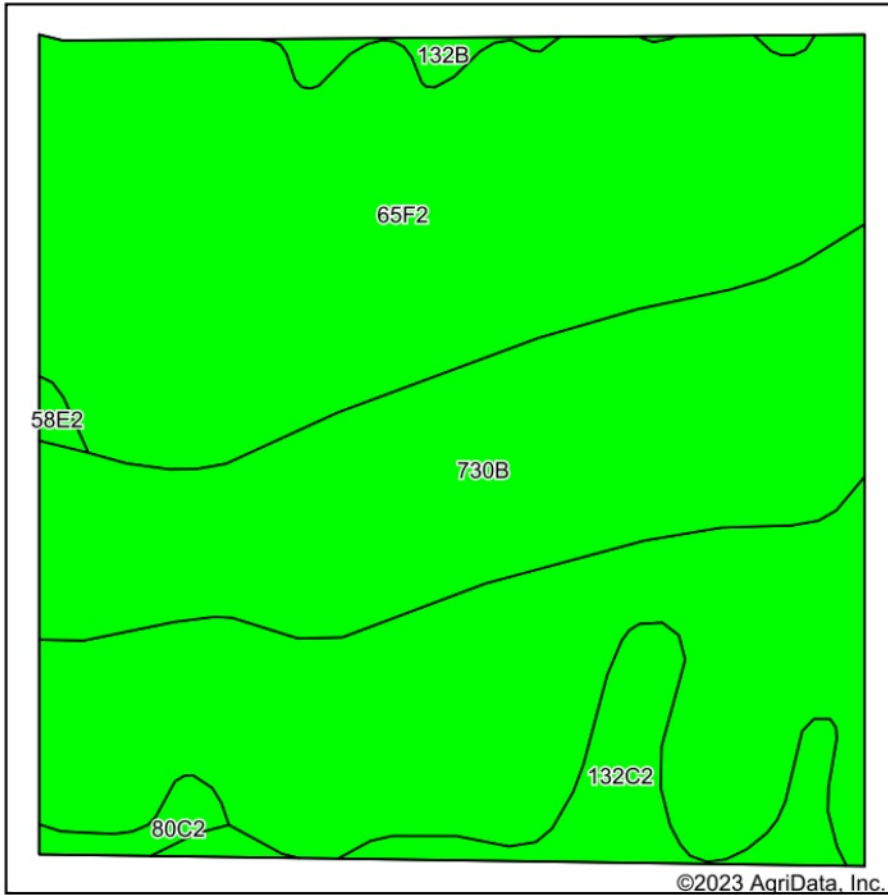
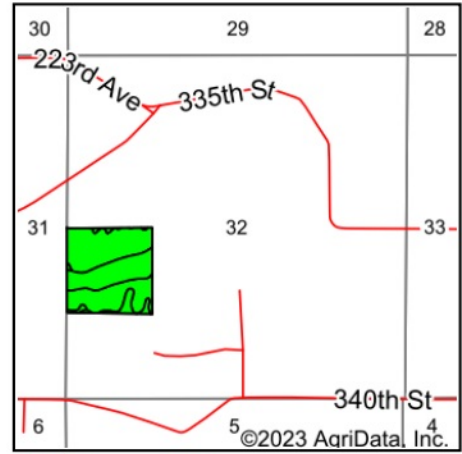


# Soils Map



Soils data provided by USDA and NRCS.



State: **Iowa**  
 County: **Lee**  
 Location: **32-66N-5W**  
 Township: **Montrose**  
 Acres: **40.65**  
 Date: **9/26/2023**



Maps Provided By:



Area Symbol: IA111, Soil Area Version: 31

Code	Soil Description	Acres	Percent of field	CSR2 Legend	Non-Irr Class *c	CSR2**	CSR	*n NCCPI Overall	*n NCCPI Corn	*n NCCPI Small Grains	*n NCCPI Soybeans	
65F2	Lindley loam, 18 to 25 percent slopes, moderately eroded	27.02	66.5%		Vlle	10	10	52	52	36	38	
730B	Nodaway-Cantril complex, 2 to 5 percent slopes	10.64	26.2%		llw	80	63	71	70	57	65	
132C2	Weller silt loam, 5 to 9 percent slopes, moderately eroded	2.07	5.1%		llle	59	40	81	81	70	68	
132B	Weller silt loam, 2 to 5 percent slopes	0.42	1.0%		llle	67	60	89	89	78	80	
80C2	Clinton silt loam, 5 to 9 percent slopes, eroded	0.38	0.9%		llle	69	60	74	74	63	61	
58E2	Douds loam, heavy loess, 14 to 18 percent slopes, moderately eroded	0.12	0.3%		Vlle	34	18	76	76	56	57	
<b>Weighted Average</b>						<b>5.41</b>	<b>32</b>	<b>26.4</b>	<b>*n 59.1</b>	<b>*n 58.8</b>	<b>*n 44</b>	<b>*n 47.3</b>

\*\*IA has updated the CSR values for each county to CSR2.

\*n: The aggregation method is "Weighted Average using all components"

\*c: Using Capabilities Class Dominant Condition Aggregation Method

Soils data provided by USDA and NRCS.