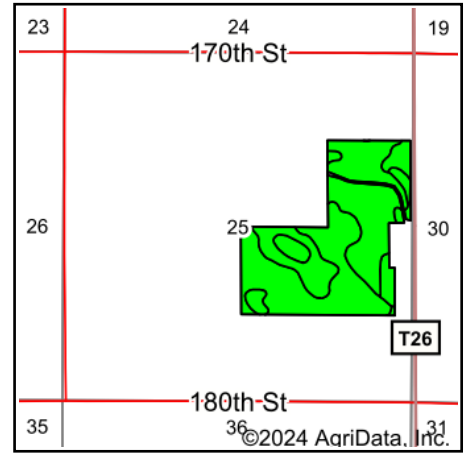
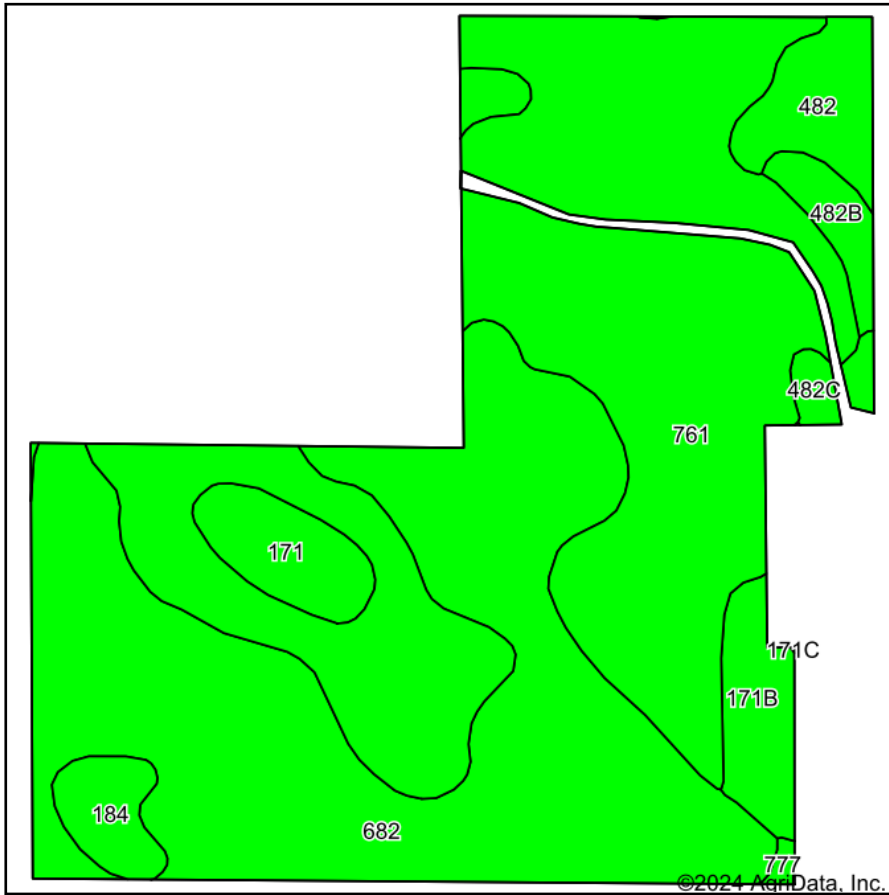


Soils Map



State: **Iowa**
 County: **Floyd**
 Location: **25-96N-18W**
 Township: **Rockford**
 Acres: **106.35**
 Date: **1/11/2024**



Maps Provided By:



Soils data provided by USDA and NRCS.

© AgriData, Inc. 2023

www.AgriDataInc.com

Area Symbol: IA067, Soil Area Version: 29

Code	Soil Description	Acres	Percent of field	NCCPI Overall Legend	Non-Irr Class *c	CSR2**	CSR	Bromegrass alfalfa AUM	Bromegrass alfalfa hay Tons	Corn Bu	Kentucky bluegrass AUM	Oats Bu	Smooth bromegrass AUM	Soybeans Bu	*n NCCPI Overall
761	Franklin silt loam, 1 to 3 percent slopes	48.74	45.8%		lw	85	90								88
682	Maxfield silt loam, 0 to 2 percent slopes	42.48	39.9%		llw	83									79
482	Racine silt loam, 0 to 2 percent slopes	3.52	3.3%		ls	87	84								73
171	Bassett loam, 0 to 2 percent slopes	3.25	3.1%		lw	90	84								93
171B	Bassett loam, 2 to 5 percent slopes	3.25	3.1%		lle	85	79	10.7	6.4	215	3.9	92	6.4	62	86
184	Klinger silty clay loam, 1 to 4 percent slopes	2.14	2.0%		lw	95	95								89

Soils data provided by USDA and NRCS.



Code	Soil Description	Acres	Percent of field	NCCPI Overall Legend	Non-Irr Class *c	CSR2**	CSR	Bromegrass alfalfa AUM	Bromegrass alfalfa hay Tons	Corn Bu	Kentucky bluegrass AUM	Oats Bu	Smooth bromegrass AUM	Soybeans Bu	*n NCCPI Overall	*n
482B	Racine loam, 2 to 5 percent slopes	1.70	1.6%		Ile	76	79									66
482C	Racine loam, 5 to 9 percent slopes	1.05	1.0%		IIle	77	64									91
777	Wapsie loam, 0 to 2 percent slopes	0.22	0.2%		IIs	51	58									67
Weighted Average						1.47	84.3	*-	0.3	0.2	6.6	0.1	2.8	0.2	1.9	*n 83.7

**IA has updated the CSR values for each county to CSR2.

**IA has updated the CSR values for each county to CSR2.*- CSR weighted average cannot be calculated on the current soils data, use prior data version for csr values.

*n: The aggregation method is "Weighted Average using all components"

**IA has updated the CSR values for each county to CSR2.*- CSR weighted average cannot be calculated on the current soils data, use prior data version for csr values.*c: Using Capabilities Class Dominant Condition Aggregation Method