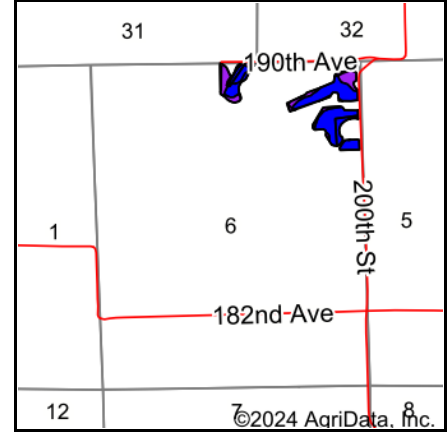
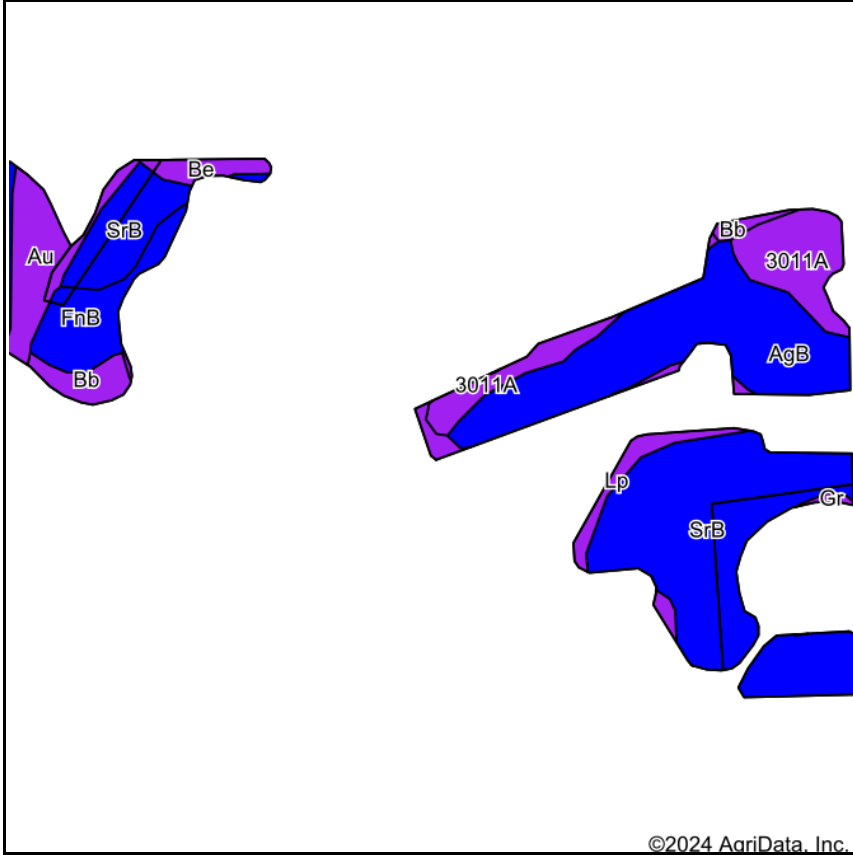


# Soils Map



State: **Wisconsin**  
 County: **Chippewa**  
 Location: **6-30N-7W**  
 Township: **Eagle Point**  
 Acres: **24.11**  
 Date: **1/26/2024**



Soils data provided by USDA and NRCS.

©2024 AgriData, Inc.

Area Symbol: WI017, Soil Area Version: 20

Code	Soil Description	Acres	Percent of field	Non-Irr Class Legend	Non-Irr Class *c	*n NCCPI Overall	*n NCCPI Corn	*n NCCPI Small Grains	*n NCCPI Soybeans
SrB	Spencer silt loam, 2 to 6 percent slopes	9.52	39.5%		Ile	70	70	64	60
AgB	Almena silt loam, 0 to 3 percent slopes	6.19	25.7%		IIw	68	68	63	53
3011A	Barronett silt loam, 0 to 2 percent slopes	2.65	11.0%		VIw	51	22	51	29
Au	Auburndale silt loam, 0 to 2 percent slopes	1.73	7.2%		VIw	55	54	53	32
FnB	Freeon silt loam, 2 to 6 percent slopes	1.67	6.9%		Ile	62	62	59	42
Lp	Lupton muck, 0 to 1 percent slopes	1.03	4.3%		VIw	47	20	47	28
Bb	Barronett mucky silt loam, ponded, 0 to 2 percent slopes	0.79	3.3%		VIw	54	23	54	32
Be	Beseman muck, 0 to 1 percent slopes	0.46	1.9%		VIIw	42	18	42	29
Gr	Greenwood peat, 0 to 1 percent slopes	0.07	0.3%		VIIw	36	17	36	27
<b>Weighted Average</b>					<b>3.14</b>	<b>*n 63.6</b>	<b>*n 57.7</b>	<b>*n 59.6</b>	<b>*n 48.6</b>

\*n: The aggregation method is "Weighted Average using all components"

\*c: Using Capabilities Class Dominant Condition Aggregation Method