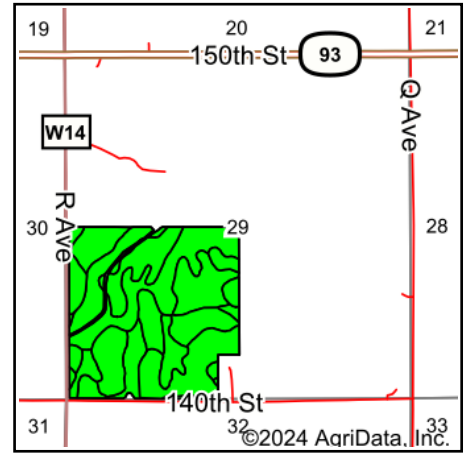
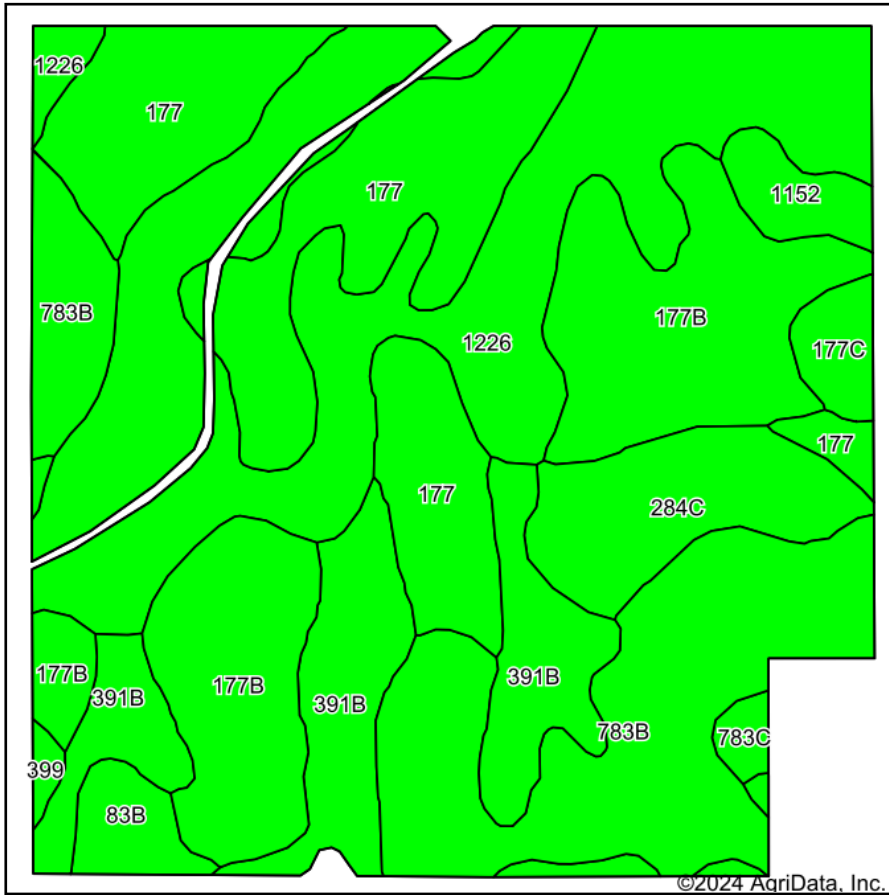


# Soils Map



State: **Iowa**  
 County: **Fayette**  
 Location: **29-93N-9W**  
 Township: **Center**  
 Acres: **148.95**  
 Date: **1/29/2024**



Maps Provided By:  
  
 CUSTOMIZED ONLINE MAPPING  
 © AgriData, Inc. 2023 www.AgriDataInc.com



Soils data provided by USDA and NRCS.

Area Symbol: IA065, Soil Area Version: 28

Code	Soil Description	Acres	Percent of field	CSR2 Legend	Non-Irr Class *c	CSR2**	CSR	*n NCCPI Overall	*n NCCPI Corn	*n NCCPI Small Grains	*n NCCPI Soybeans	*n NCCPI Cotton	
1226	Lawler loam, 0 to 2 percent slopes, rarely flooded	38.95	26.1%		Ils	59	71	83	83	70	60	1	
177	Saude loam, 0 to 2 percent slopes	28.08	18.9%		Ils	60	64	79	79	68	62		
783B	Cresco loam, 2 to 5 percent slopes	24.66	16.6%		Ile	73	65	76	76	57	63		
177B	Saude loam, 2 to 5 percent slopes	24.46	16.4%		Ils	55	59	77	77	67	60		
391B	Clyde-Floyd complex, 1 to 4 percent slopes	15.90	10.7%		llw	87	73	89	87	72	86		
284C	Flagler sandy loam, 5 to 9 percent slopes	8.24	5.5%		llle	44	30	65	65	50	36		
83B	Kenyon loam, 2 to 5 percent slopes	2.95	2.0%		Ile	90	85	89	89	71	77		
1152	Marshan clay loam, 0 to 2 percent slopes, rarely flooded	2.40	1.6%		llw	54	67	81	81	65	60		
177C	Saude loam, 5 to 9 percent slopes	2.00	1.3%		llle	50	39	75	75	65	57		
783C	Cresco loam, 5 to 9 percent slopes	0.83	0.6%		llle	79	45	81	81	71	81		
399	Readlyn silt loam, 1 to 3 percent slopes	0.48	0.3%		lw	91	89	80	80	65	68		
<b>Weighted Average</b>						<b>2.07</b>	<b>63.6</b>	<b>64.4</b>	<b>*n 79.7</b>	<b>*n 79.5</b>	<b>*n 65.9</b>	<b>*n 62.8</b>	<b>*n 0.3</b>

\*\*IA has updated the CSR values for each county to CSR2.

\*n: The aggregation method is "Weighted Average using all components"

\*\*IA has updated the CSR values for each county to CSR2.\*c: Using Capabilities Class Dominant Condition Aggregation Method

Soils data provided by USDA and NRCS.