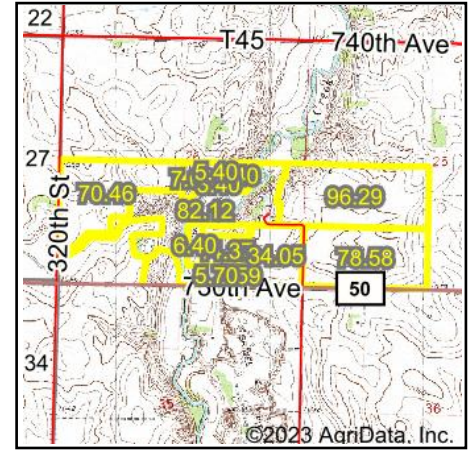
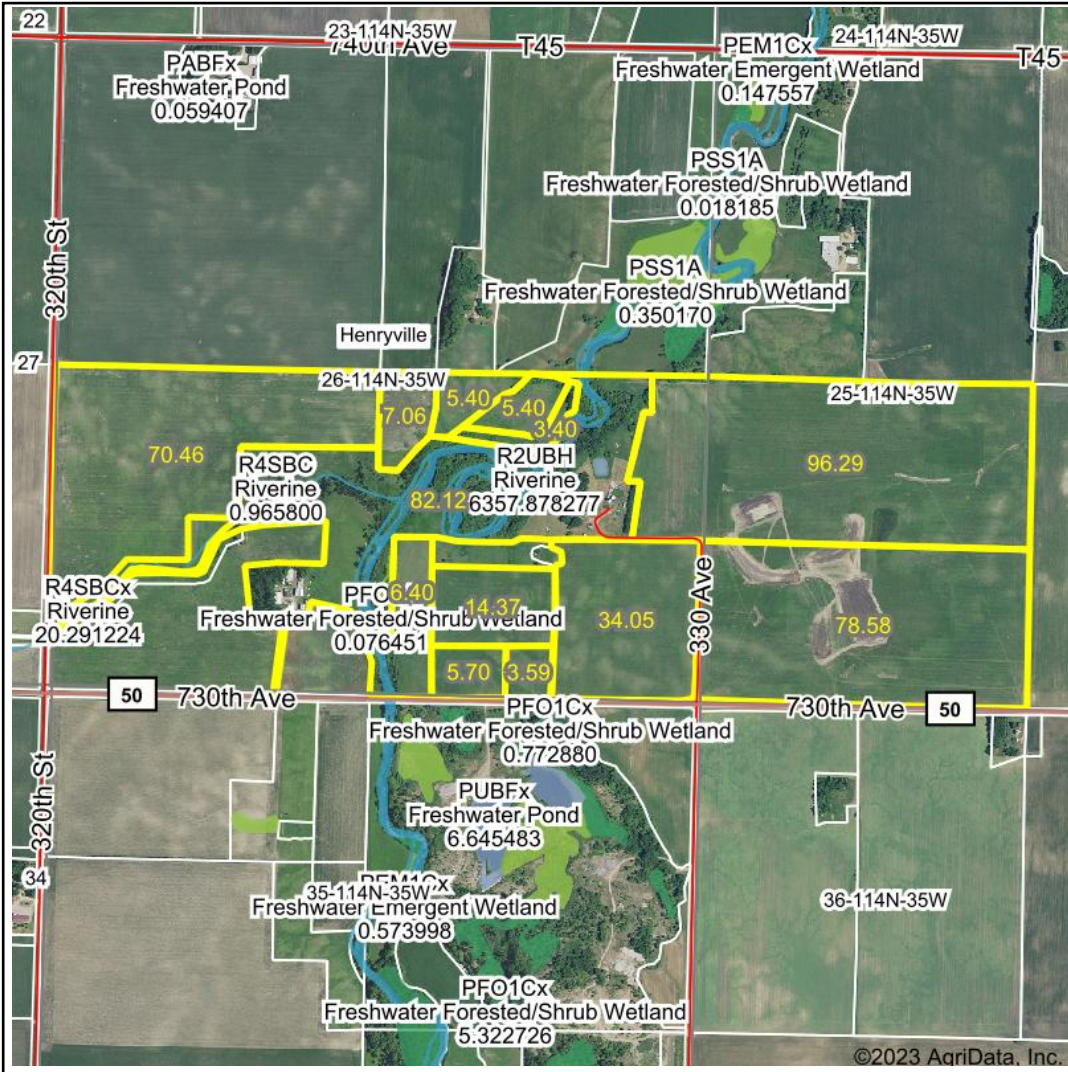


# Wetlands Map



**State:** Minnesota  
**Location:** 26-114N-35W  
**County:** Renville  
**Township:** Henryville  
**Date:** 12/26/2023



Maps Provided By:  
  
 CUSTOMIZED ONLINE MAPPING  
 © AgriData, Inc. 2023 www.AgriDataInc.com



0ft 1777ft 3555ft

Classification Code	Type	Acres
R2UBH	Riverine	10.54
R4SBC	Riverine	0.68
PFO1A	Freshwater Forested/Shrub Wetland	0.42
PUBFx	Freshwater Pond	0.36
PEM1A	Freshwater Emergent Wetland	0.32
R4SBCx	Riverine	0.19
PEM1C	Freshwater Emergent Wetland	0.13
Total Acres		12.64

Data Source: National Wetlands Inventory website. U.S. DoI, Fish and Wildlife Service, Washington, D.C. <http://www.fws.gov/wetlands/>