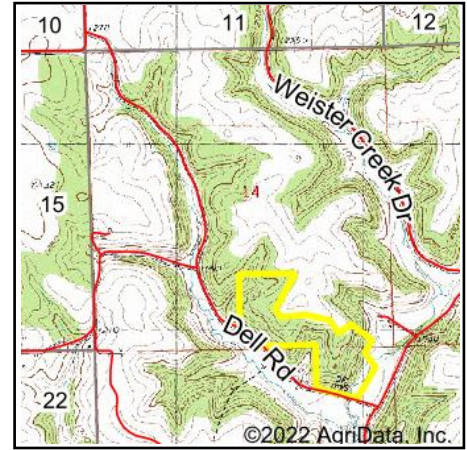
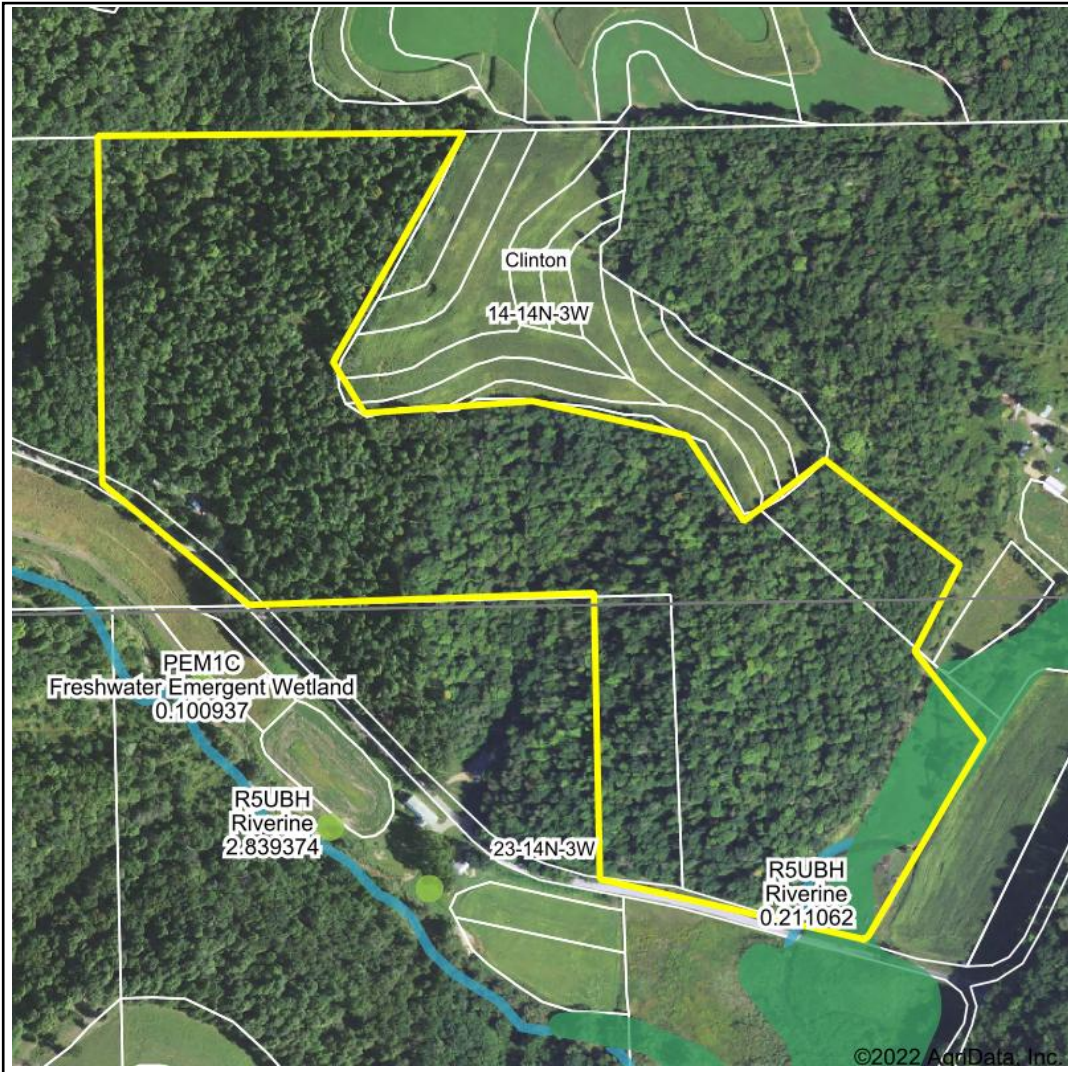


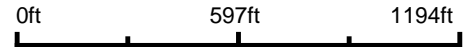
# Wetlands Map



**State:** Wisconsin  
**Location:** 14-14N-3W  
**County:** Vernon  
**Township:** Clinton  
**Date:** 5/31/2022


**HIGH POINT**  
 LAND COMPANY  
 Maps Provided By:  

**surety**  
CUSTOMIZED ONLINE MAPPING  
© AgriData, Inc. 2021 www.AgriDataInc.com



Classification Code	Type	Acres
PFO1/EM1C	Freshwater Forested/Shrub Wetland	2.41
R5UBH	Riverine	0.17
Total Acres		2.58

Data Source: National Wetlands Inventory website. U.S. Dol, Fish and Wildlife Service, Washington, D.C. <http://www.fws.gov/wetlands/>