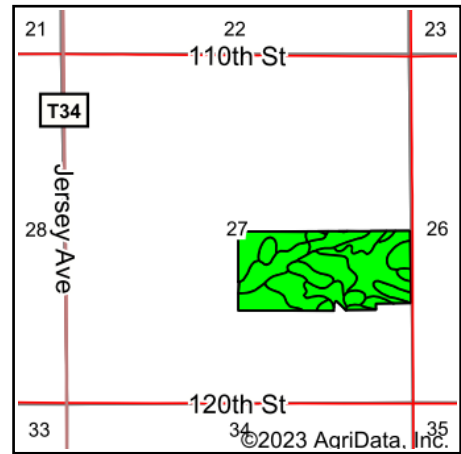
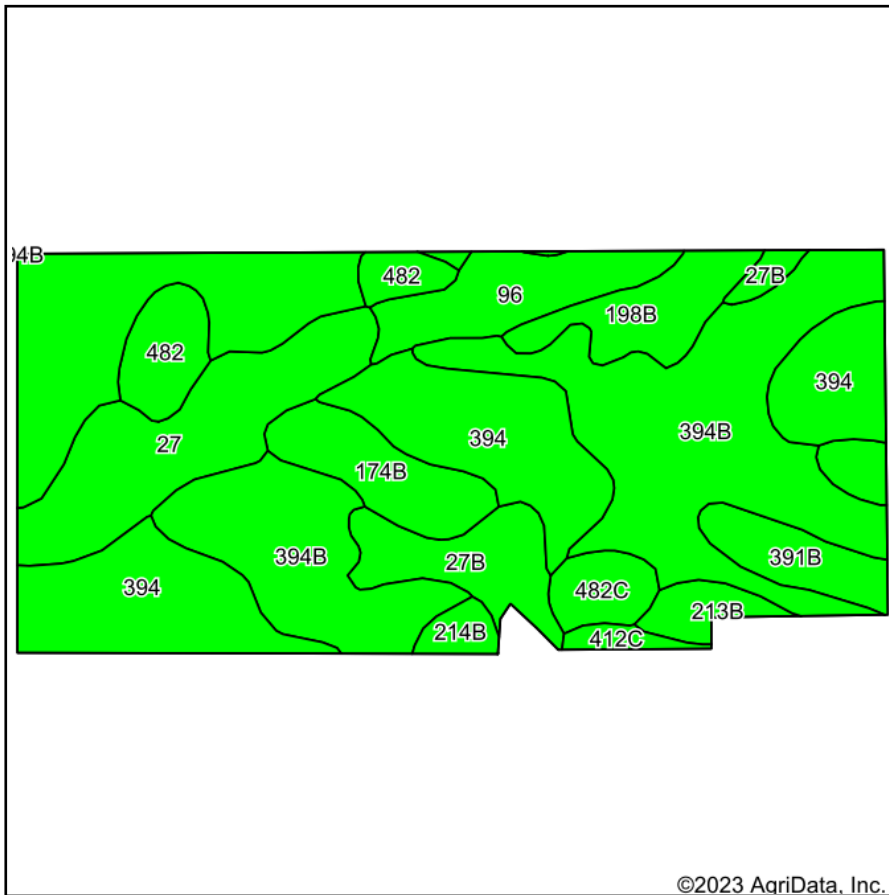


Soils Map



State: **Iowa**
 County: **Floyd**
 Location: **27-97N-17W**
 Township: **Rudd**
 Acres: **71**
 Date: **12/28/2023**



Maps Provided By:



Soils data provided by USDA and NRCS.

©2023 AgriData, Inc.

© AgriData, Inc. 2023

www.AgriDataInc.com

Area Symbol: IA067, Soil Area Version: 29

Code	Soil Description	Acres	Percent of field	CSR2 Legend	Non-Irr Class *c	CSR2**	CSR	*n NCCPI Overall	*n NCCPI Corn	*n NCCPI Small Grains	*n NCCPI Soybeans	
394	Ostrander loam, 0 to 2 percent slopes	21.69	30.5%		Is	94	89	78	78	71	70	
394B	Ostrander loam, 2 to 5 percent slopes	19.58	27.6%		Ile	88	84	77	76	70	68	
27	Terril loam, 0 to 2 percent slopes	7.08	10.0%		I	95	92	97	97	80	91	
27B	Terril loam, 2 to 5 percent slopes	3.59	5.1%		Ile	89	87	96	96	79	89	
96	Turlin loam, 0 to 2 percent slopes	3.49	4.9%		Ilw	94	90	89	87	59	86	
174B	Bolan loam, 2 to 5 percent slopes	3.17	4.5%		Ils	64	70	81	81	67	70	
198B	Floyd loam, 1 to 4 percent slopes	2.96	4.2%		Ilw	89	74	88	83	66	88	
391B	Clyde-Floyd complex, 1 to 4 percent slopes	2.88	4.1%		Ilw	87	73	89	87	72	86	
482	Racine silt loam, 0 to 2 percent slopes	2.73	3.8%		Is	87	84	73	73	64	65	
482C	Racine loam, 5 to 9 percent slopes	1.47	2.1%		Ille	77	64	91	91	77	80	
213B	Rockton loam, 30 to 40 inches to limestone, till plain, 2 to 5 percent slopes	1.13	1.6%		Ile	49	74	58	58	51	41	
214B	Rockton loam, 20 to 30 inches to limestone, till plain, 2 to 5 percent slopes	0.71	1.0%		Ile	47	58	52	52	47	36	
412C	Emeline loam, 2 to 9 percent slopes	0.52	0.7%		IVs	7	13	29	26	29	19	
Weighted Average						1.59	87.9	83.9	*n 81.2	*n 80.5	*n 70.1	*n 73.5

**IA has updated the CSR values for each county to CSR2.

*n: The aggregation method is "Weighted Average using all components"

*c: Using Capabilities Class Dominant Condition Aggregation Method

Soils data provided by USDA and NRCS.