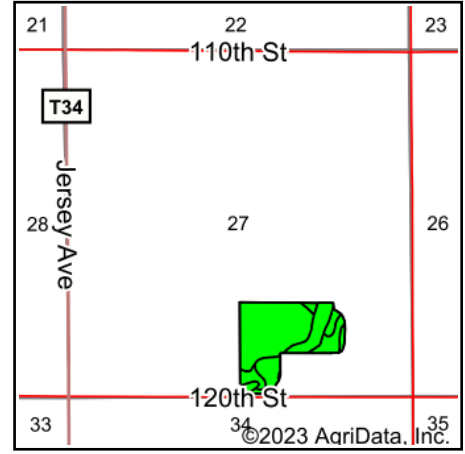
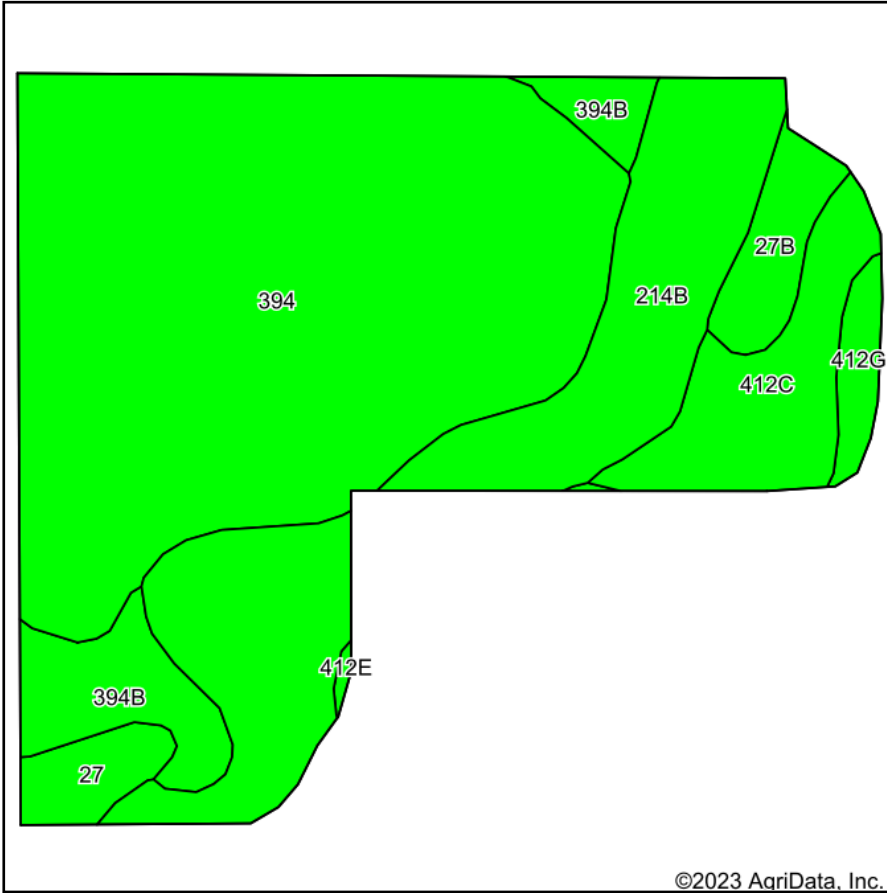


Soils Map



State: **Iowa**
 County: **Floyd**
 Location: **27-97N-17W**
 Township: **Rudd**
 Acres: **36.13**
 Date: **12/7/2023**



Maps Provided By:



© AgriData, Inc. 2023

www.AgriDataInc.com



Soils data provided by USDA and NRCS.

Area Symbol: IA067, Soil Area Version: 29

Code	Soil Description	Acres	Percent of field	CSR2 Legend	Non-Irr Class *c	CSR2**	CSR	*n NCCPI Overall	*n NCCPI Corn	*n NCCPI Small Grains	*n NCCPI Soybeans	
394	Ostrander loam, 0 to 2 percent slopes	20.00	55.4%		Is	94	89	78	78	71	70	
214B	Rockton loam, 20 to 30 inches to limestone, till plain, 2 to 5 percent slopes	8.30	23.0%		Ile	47	58	52	52	47	36	
412C	Emeline loam, 2 to 9 percent slopes	2.76	7.6%		IVs	7	13	29	26	29	19	
394B	Ostrander loam, 2 to 5 percent slopes	2.32	6.4%		Ile	88	84	77	76	70	68	
27B	Terril loam, 2 to 5 percent slopes	1.19	3.3%		Ile	89	87	96	96	79	89	
27	Terril loam, 0 to 2 percent slopes	0.86	2.4%		I	95	92	97	97	80	91	
412G	Emeline loam, 18 to 40 percent slopes	0.64	1.8%		Vlls	5	5	6	6	6	2	
412E	Emeline loam, 9 to 18 percent slopes	0.06	0.2%		Vis	5	5	25	23	25	16	
Weighted Average						1.67	74.3	74.1	*n 67.9	*n 67.6	*n 61.5	*n 58

**IA has updated the CSR values for each county to CSR2.

*n: The aggregation method is "Weighted Average using all components"

*c: Using Capabilities Class Dominant Condition Aggregation Method

Soils data provided by USDA and NRCS.