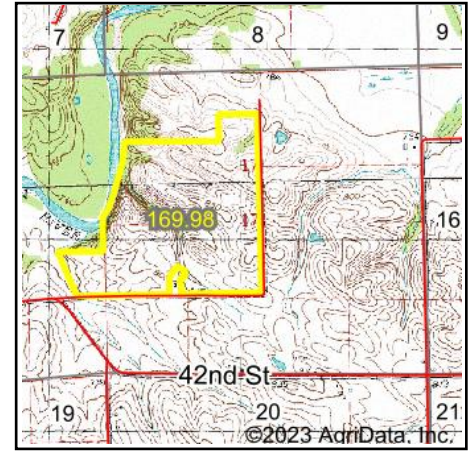


Wetlands Map



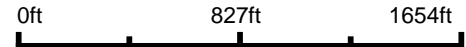
State: Iowa
Location: 17-83N-2W
County: Jones
Township: Hale
Date: 11/7/2023



Maps Provided By:



© AgriData, Inc. 2023 www.AgriDataInc.com



Classification Code	Type	Acres
R4SBC	Riverine	0.98
R4SBA	Riverine	0.83
R2UBH	Riverine	0.24
PUBF	Freshwater Pond	0.07
	Total Acres	2.12

Data Source: National Wetlands Inventory website. U.S. DoI, Fish and Wildlife Service, Washington, D.C. <http://www.fws.gov/wetlands/>