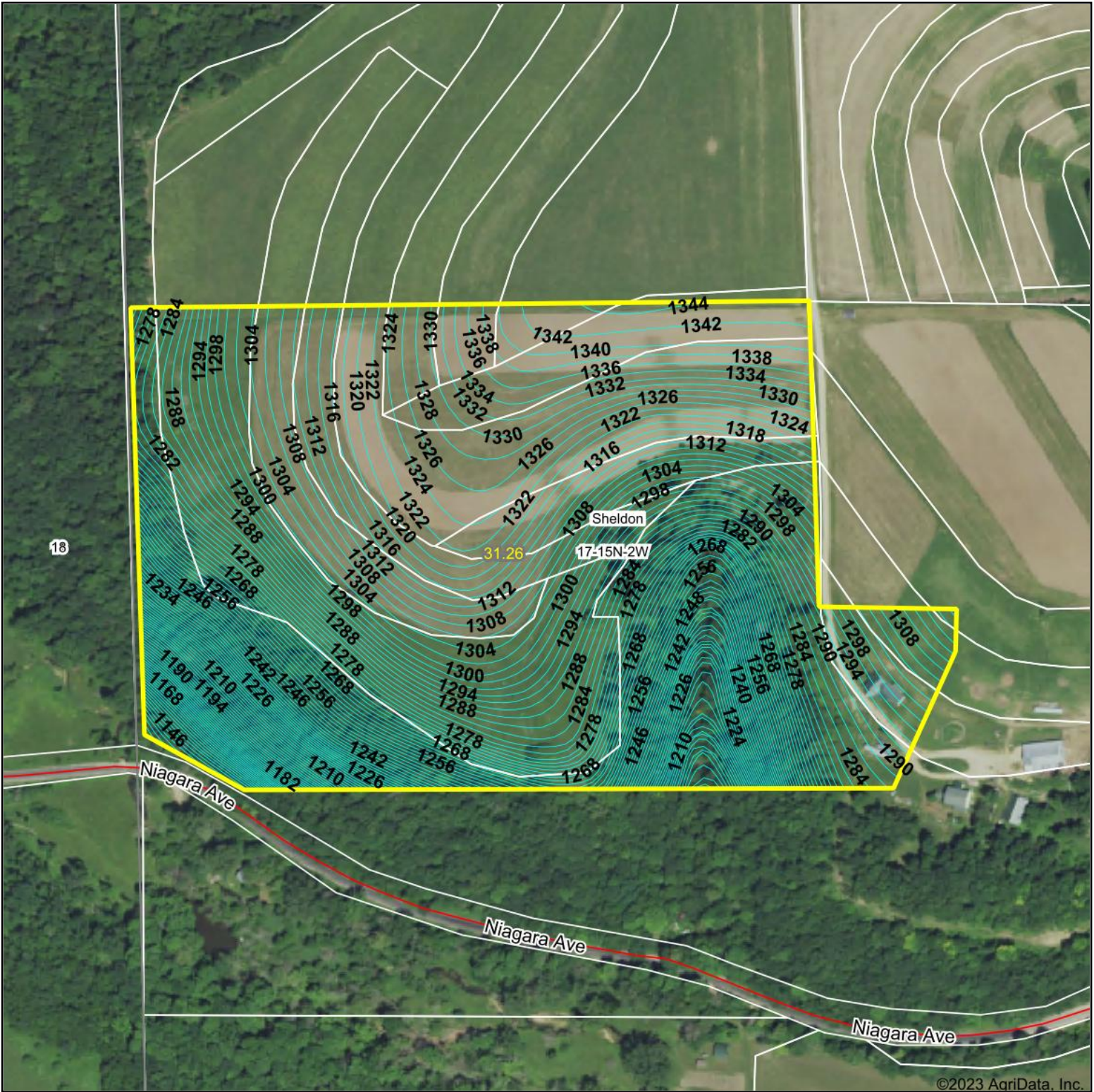


Topography Contours



©2023 AgriData, Inc.



HIGH POINT
LAND COMPANY

Maps Provided By:



CUSTOMIZED ONLINE MAPPING
© AgriData, Inc. 2023 www.AgriDataInc.com

Source: USGS 10 meter dem

Interval(ft): 2.0

Min: 1,139.2

Max: 1,344.0

Range: 204.8

Average: 1,287.7

Standard Deviation: 39.67 ft

0ft 308ft 617ft



10/29/2023

17-15N-2W
Monroe County
Wisconsin

Boundary Center: 43° 46' 32.64, -90° 38' 55.92

Field borders provided by Farm Service Agency as of 5/21/2008.