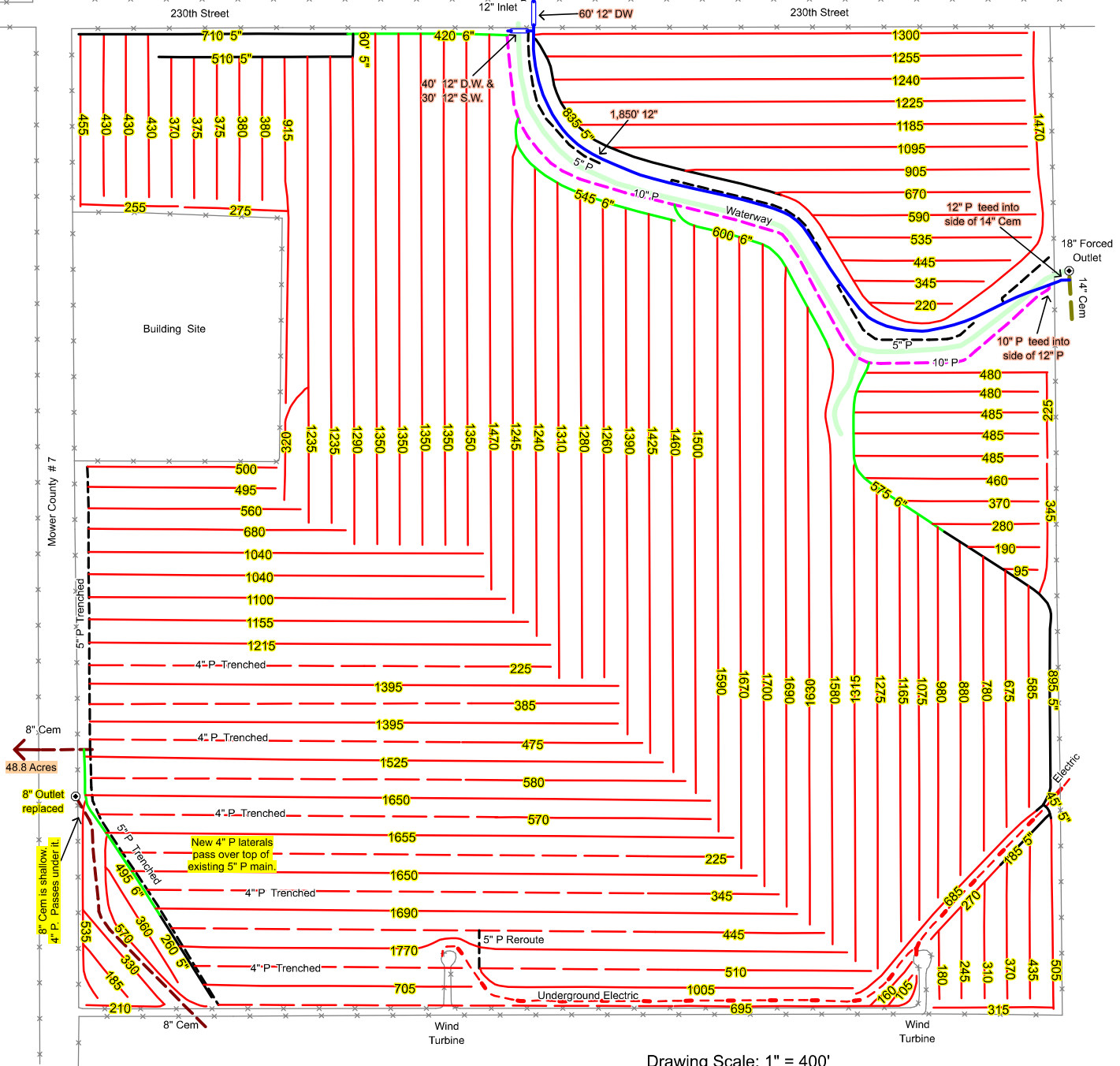
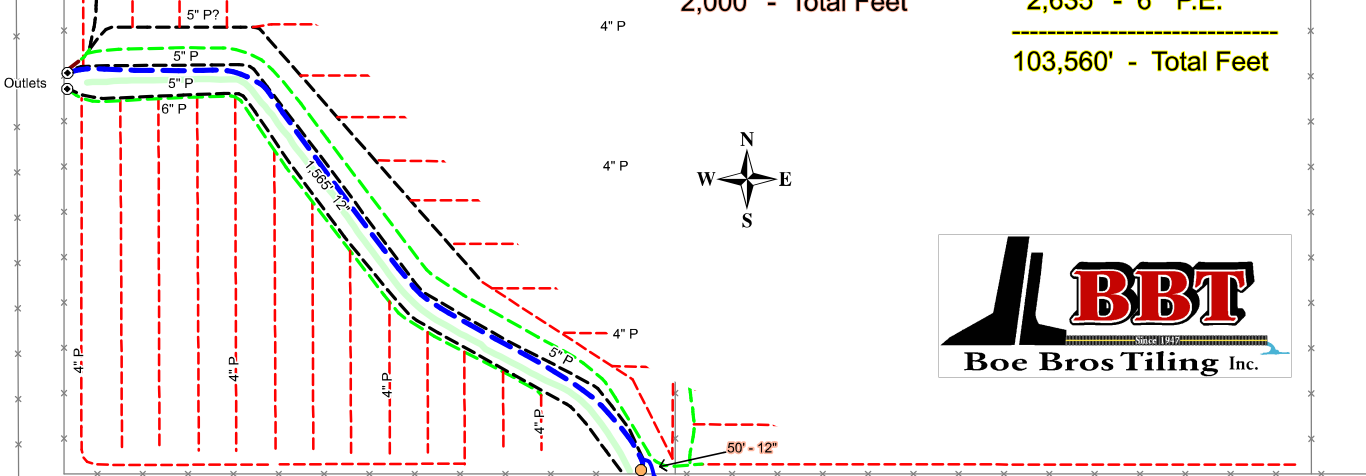


Newkirk Farm
 Section 36
 Dexter Township
 Mower County, MN

June, 2016
 Drain Tile Installed:
 1,900' - 12" S.W.
 100' - 12" D.W.
 2,000' - Total Feet

April, 2016
 60 Foot Spacings
 Drain Tile Installed:
 97,385' - 4" P.E.
 3,540' - 5" P.E.
 2,635' - 6" P.E.
 103,560' - Total Feet



Drawing Scale: 1" = 400'