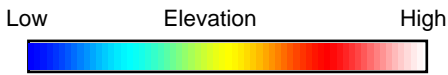
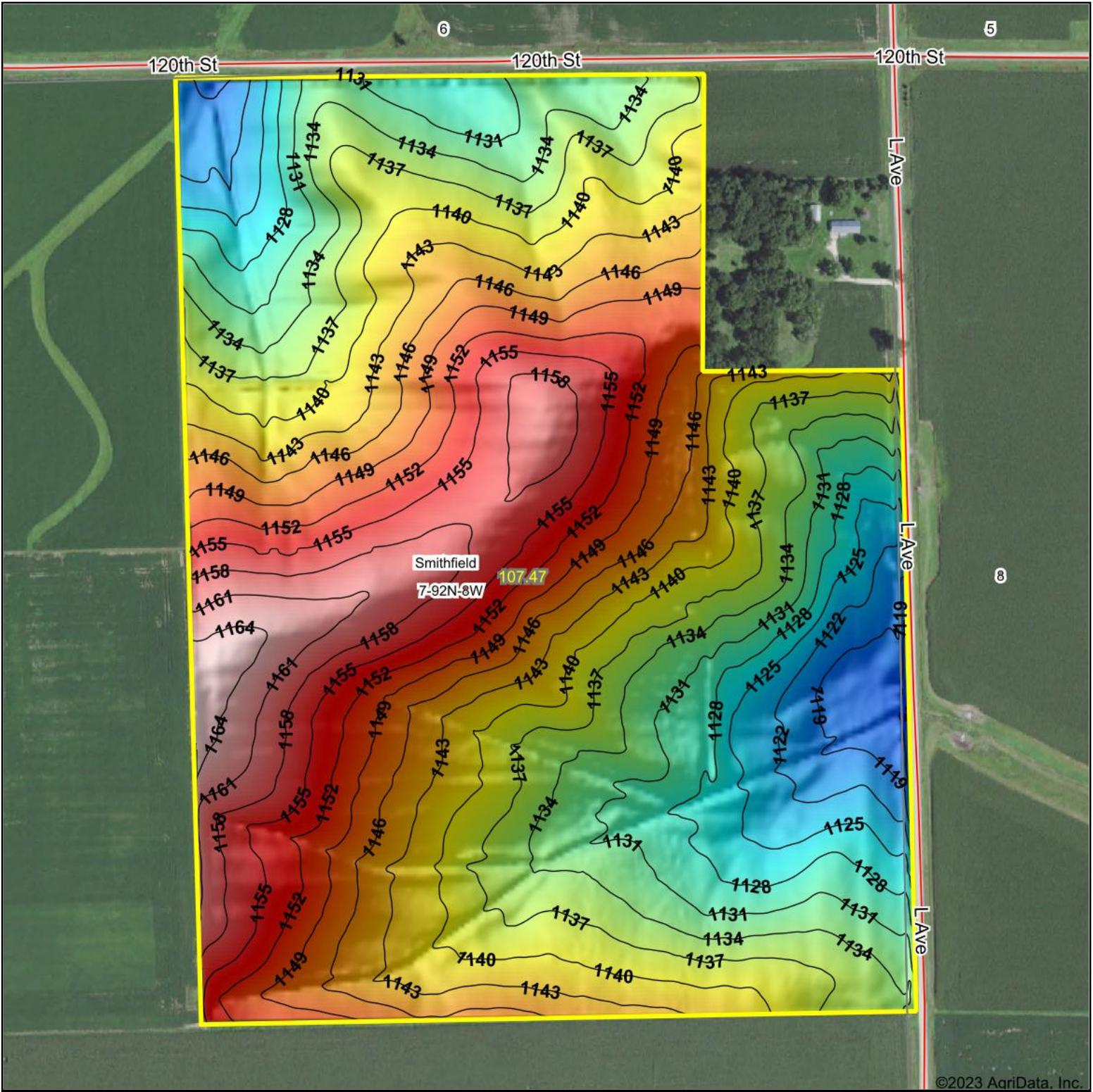
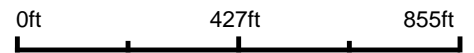


# Topography Hillshade



Source: USGS 3 meter dem



Interval(ft): 3

Min: 1,112.6

Max: 1,167.3

Range: 54.7

Average: 1,140.9

Standard Deviation: 11.22 ft



7-92N-8W  
Fayette County  
Iowa

Boundary Center: 42° 47' 59.69, -91° 49' 42.37



Maps Provided By:



© AgriData, Inc. 2023

www.AgriDataInc.com