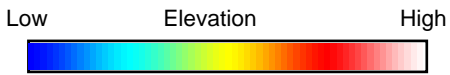
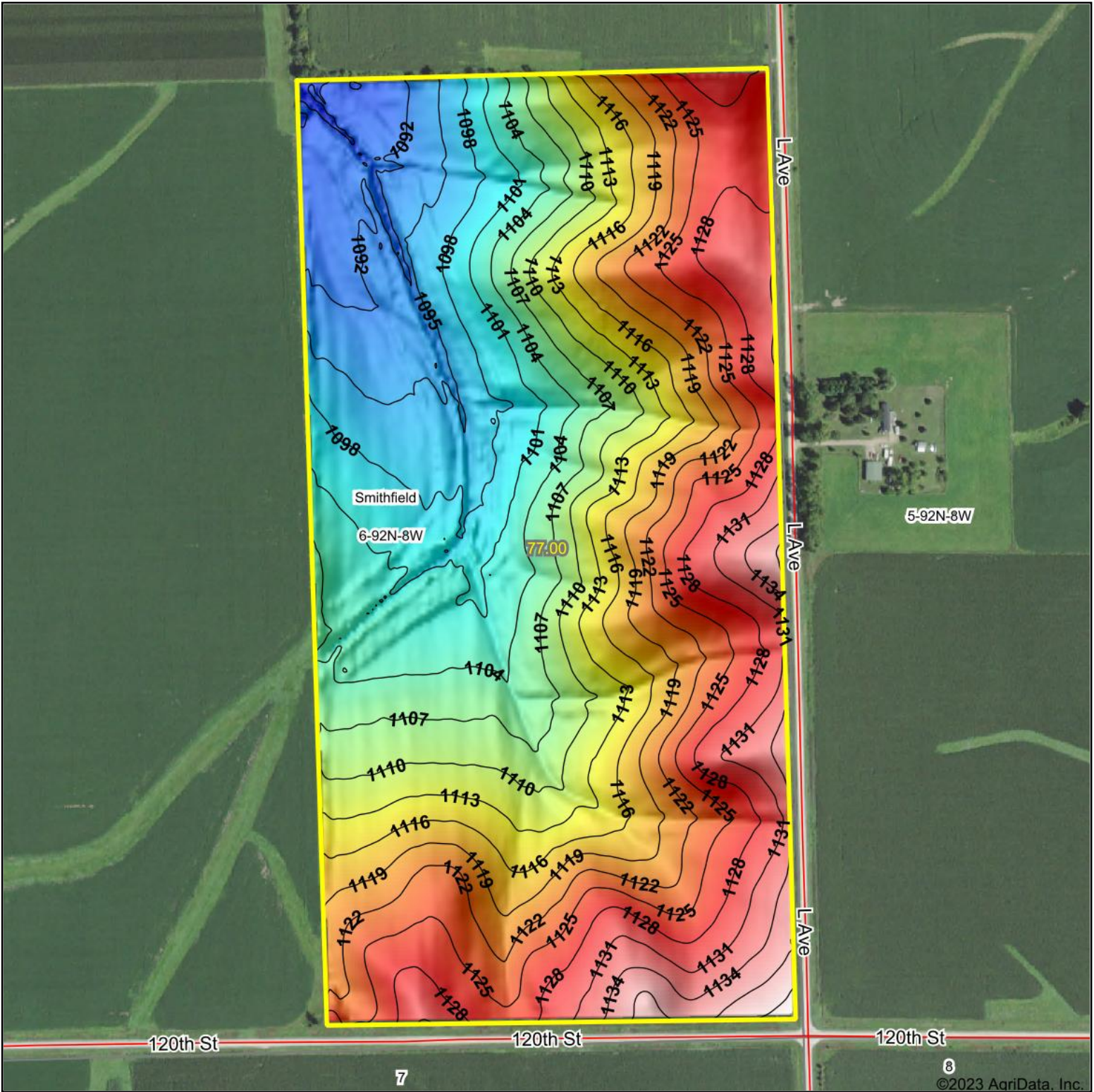


Topography Hillshade



Source: USGS 3 meter dem

Interval(ft): 3

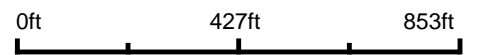
Min: 1,085.9

Max: 1,141.0

Range: 55.1

Average: 1,113.0

Standard Deviation: 12.63 ft



11/14/2023

6-92N-8W
Fayette County
Iowa

Boundary Center: 42° 48' 26.24, -91° 49' 38.66



Maps Provided By:



© AgriData, Inc. 2023

www.AgriDataInc.com