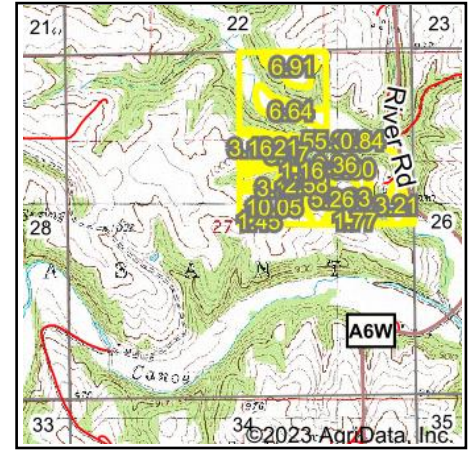
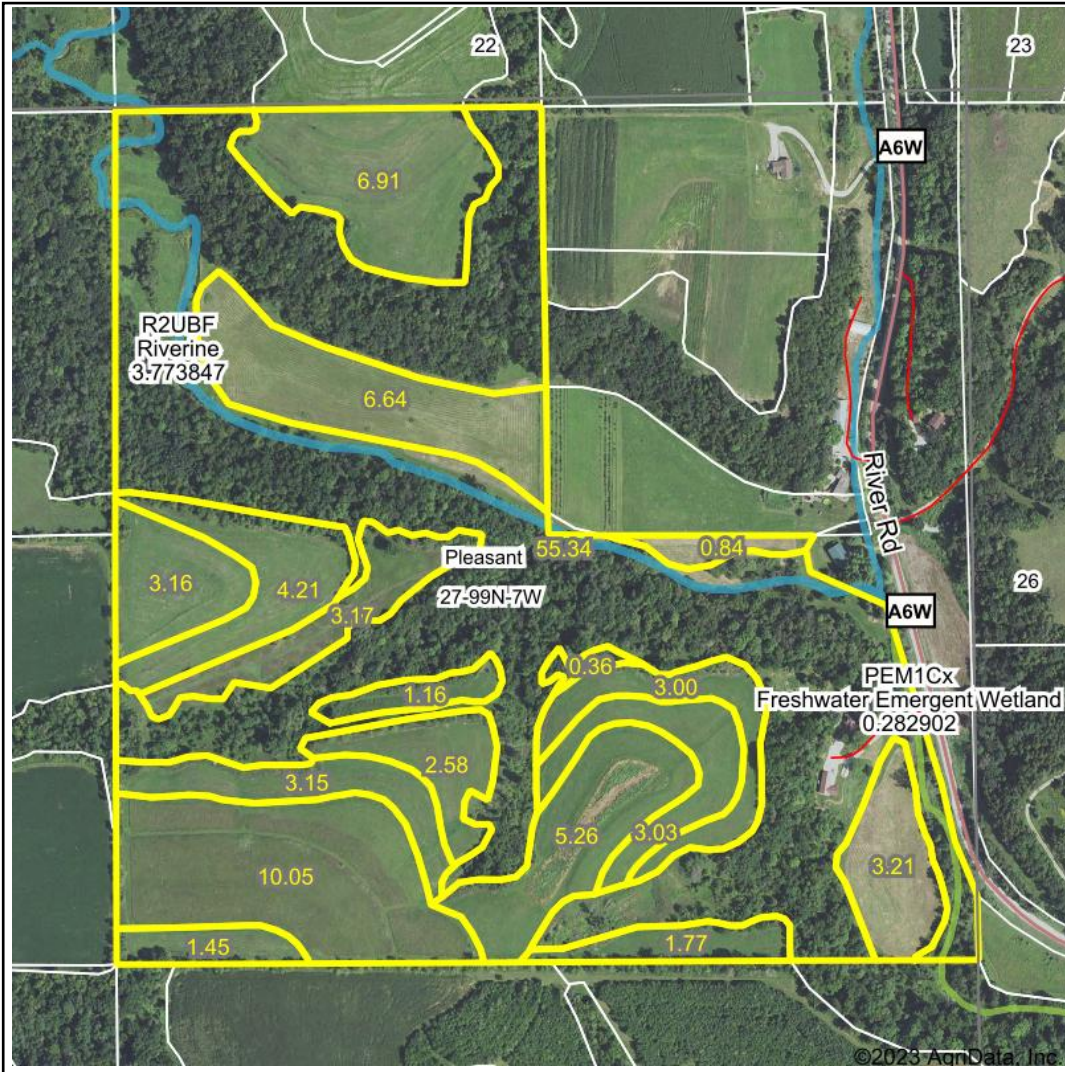


# Wetlands Map



**State:** Iowa  
**Location:** 27-99N-7W  
**County:** Winneshiek  
**Township:** Pleasant  
**Date:** 9/12/2023



Maps Provided By:



© AgriData, Inc. 2023 [www.AgriDataInc.com](http://www.AgriDataInc.com)



0ft                      680ft                      1361ft

Classification Code	Type	Acres
R2UBF	Riverine	1.91
PEM1Cx	Freshwater Emergent Wetland	0.26
PEM1C	Freshwater Emergent Wetland	0.24
Total Acres		2.41

Data Source: National Wetlands Inventory website. U.S. DoI, Fish and Wildlife Service, Washington, D.C. <http://www.fws.gov/wetlands/>