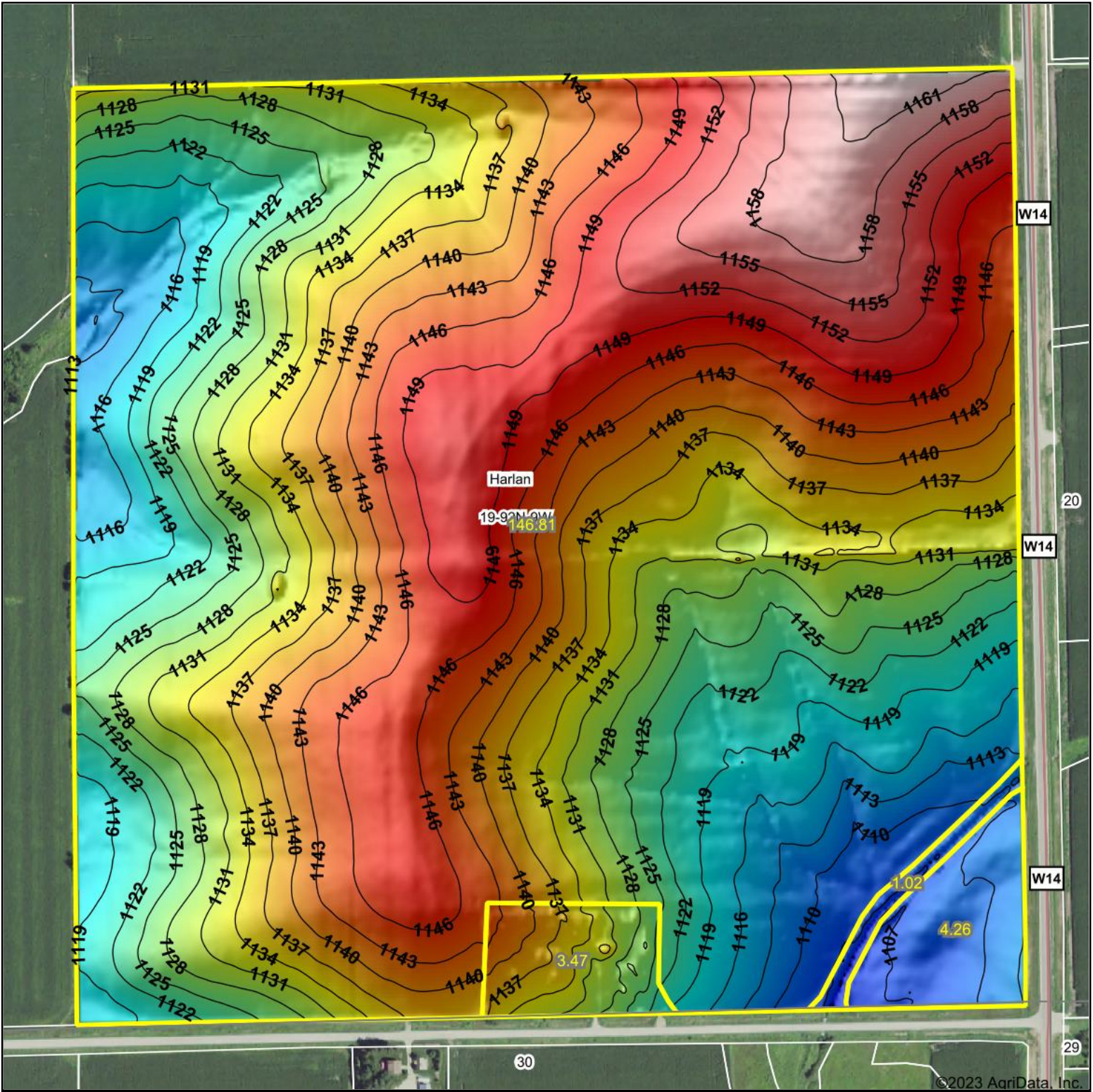


# Topography Hillshade



<p>Low Elevation High</p>	<p>Source: USGS 3 meter dem</p> <p>Interval(ft): 3</p> <p>Min: 1,103.2</p> <p>Max: 1,164.6</p> <p>Range: 61.4</p> <p>Average: 1,134.2</p> <p>Standard Deviation: 13.35 ft</p>	<p>0ft 429ft 859ft</p> <p>10/7/2023</p> <p>19-92N-9W Fayette County Iowa</p> <p>Boundary Center: 42° 45' 45.04, -91° 56' 48.74</p>
---------------------------	---	--

Maps Provided By:

CUSTOMIZED ONLINE MAPPING

© AgriData, Inc. 2023 www.AgriDataInc.com

Field borders provided by Farm Service Agency as of 5/21/2008.