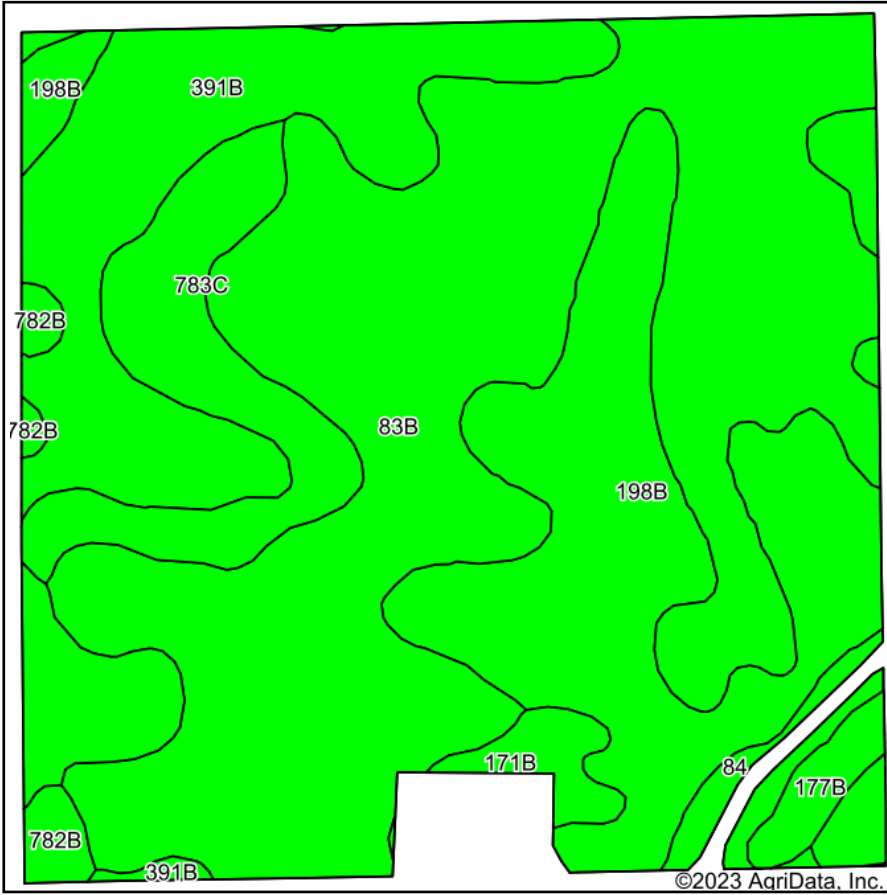
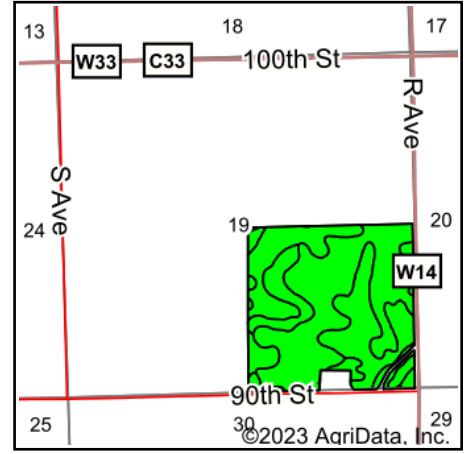


Soils Map



Soils data provided by USDA and NRCS.



State: **Iowa**
 County: **Fayette**
 Location: **19-92N-9W**
 Township: **Harlan**
 Acres: **151.07**
 Date: **10/7/2023**



Maps Provided By:



© AgriData, Inc. 2023

www.AgriDataInc.com



Area Symbol: IA065, Soil Area Version: 27

Code	Soil Description	Acres	Percent of field	CSR2 Legend	Non-Irr Class *c	CSR2**	CSR	Corn Bu	Soybeans Bu	*n NCCPI Overall	*n NCCPI Corn	*n NCCPI Small Grains	*n NCCPI Soybeans	
83B	Kenyon loam, 2 to 5 percent slopes	72.45	48.0%		Ile	90	85			87	86	66	71	
198B	Floyd loam, 1 to 4 percent slopes	32.20	21.3%		Ilw	89	80			88	83	63	88	
391B	Clyde-Floyd complex, 1 to 4 percent slopes	26.34	17.4%		Ilw	87	73			89	87	70	86	
783C	Cresco loam, 5 to 9 percent slopes	11.44	7.6%		IIle	79	45			81	81	65	81	
84	Clyde clay loam, 0 to 3 percent slopes	2.45	1.6%		Ilw	88	75			90	90	75	85	
171B	Bassett loam, 2 to 5 percent slopes	2.21	1.5%		Ile	85	80	215	62	85	85	68	73	
177B	Saude loam, 2 to 5 percent slopes	2.02	1.3%		Ils	55	59			76	76	63	59	
782B	Donnan loam, 2 to 5 percent slopes	1.96	1.3%		Ile	43	50			70	70	59	59	
Weighted Average						2.08	87.2	77.8	3.1	0.9	*n 86.8	*n 84.9	*n 66	*n 77.9

**IA has updated the CSR values for each county to CSR2.

*n: The aggregation method is "Weighted Average using all components"

*c: Using Capabilities Class Dominant Condition Aggregation Method

Soils data provided by USDA and NRCS.