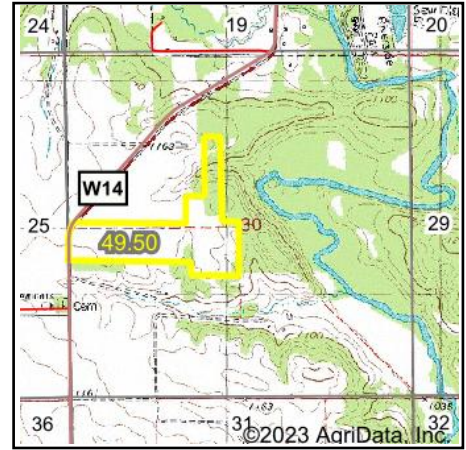
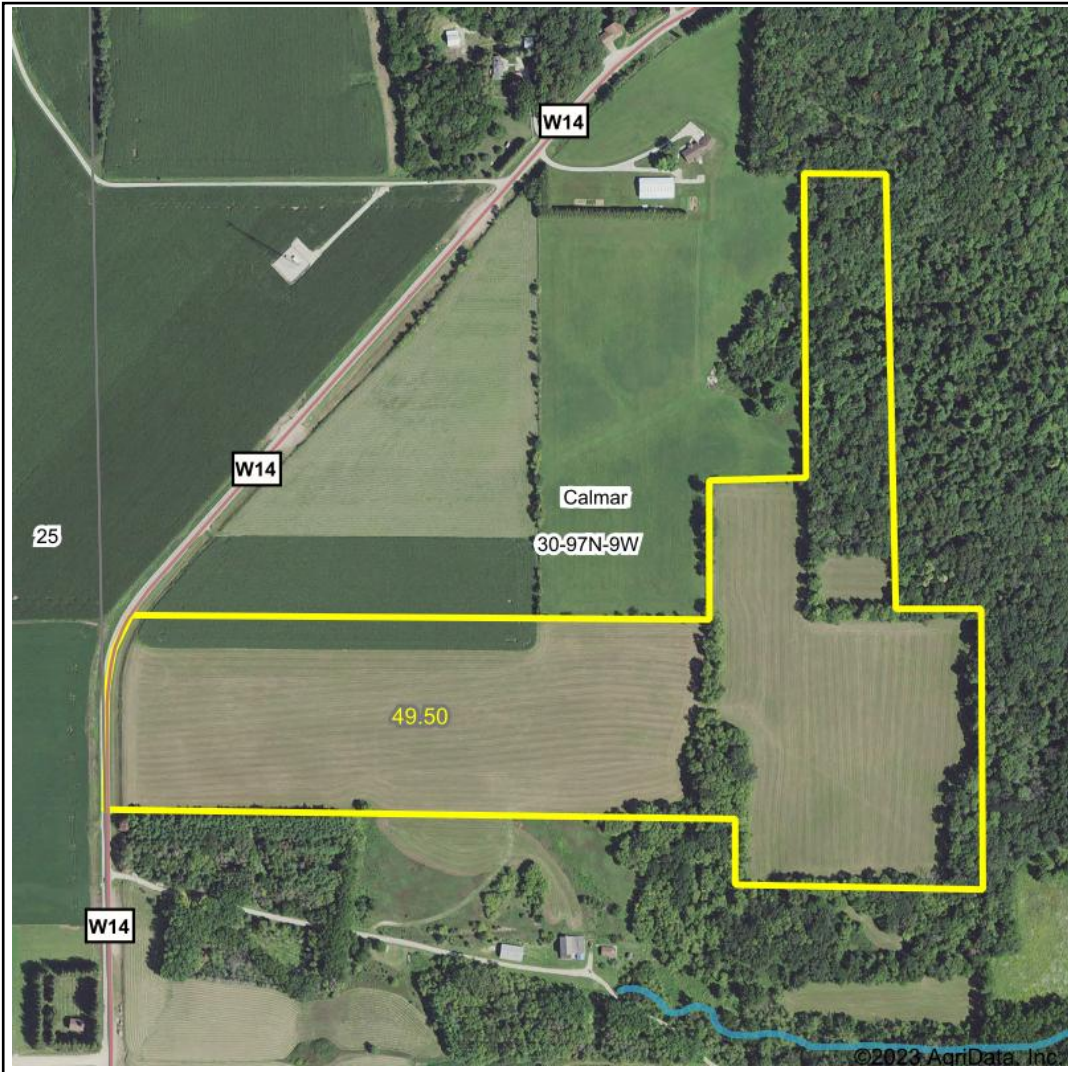


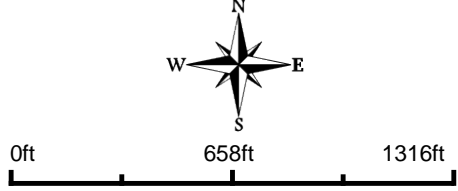
# Wetlands Map



**State:** Iowa  
**Location:** 30-97N-9W  
**County:** Winneshiek  
**Township:** Calmar  
**Date:** 10/17/2023


**HIGH POINT**  
 LAND COMPANY  
 Maps Provided By:  

**surety**  
 CUSTOMIZED ONLINE MAPPING  
© AgriData, Inc. 2023      www.AgriDataInc.com



Classification Code	Type	Acres
	Total Acres	0.00

Data Source: National Wetlands Inventory website. U.S. DoI, Fish and Wildlife Service, Washington, D.C. <http://www.fws.gov/wetlands/>