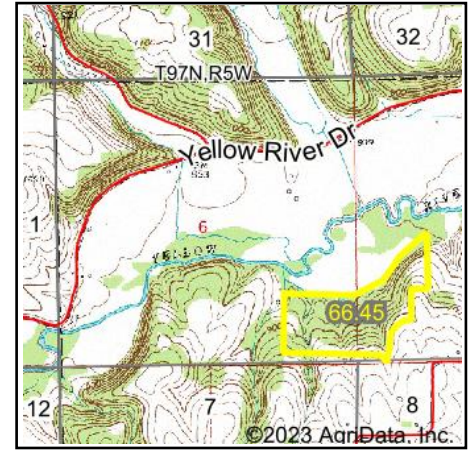
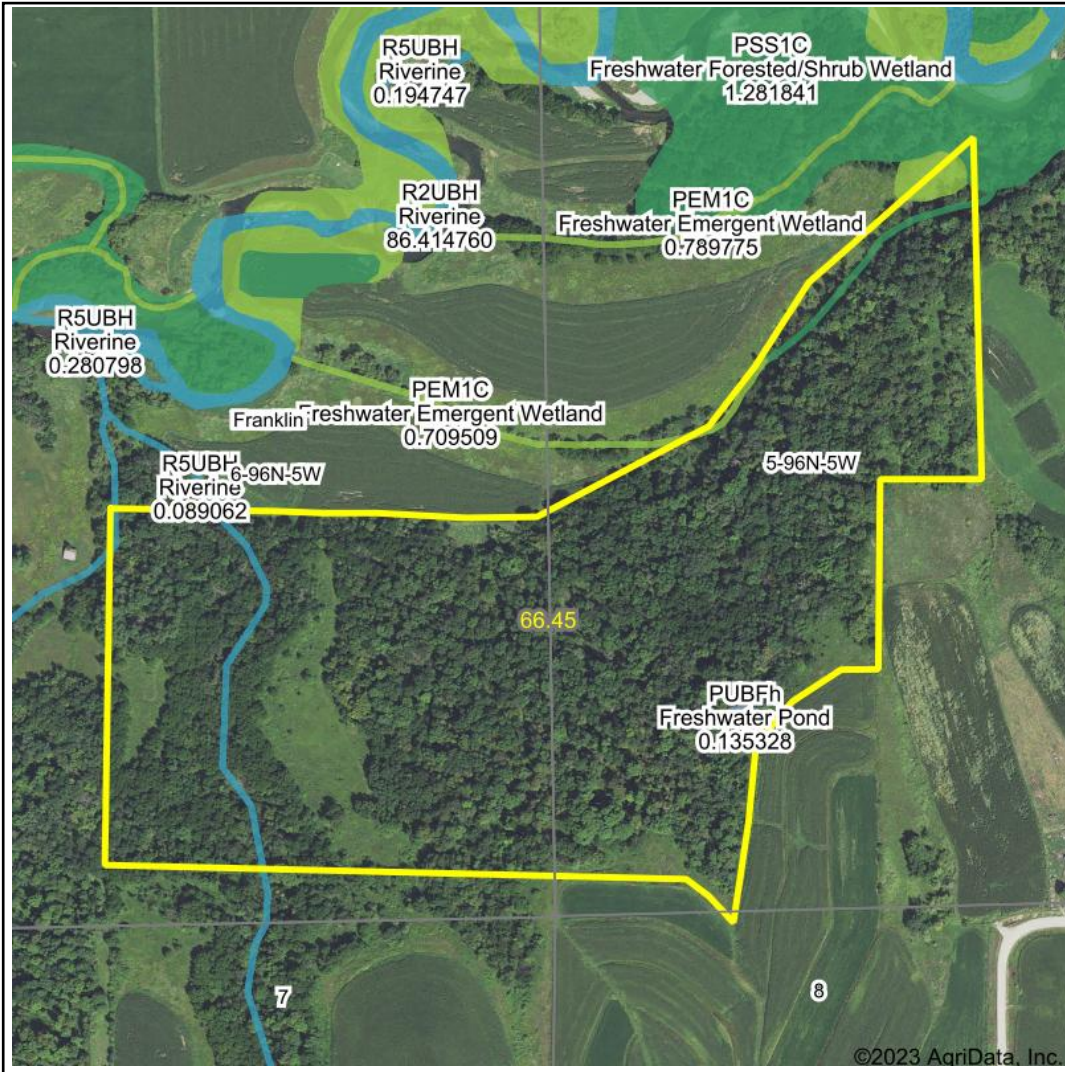


# Wetlands Map



**State:** Iowa  
**Location:** 6-96N-5W  
**County:** Allamakee  
**Township:** Franklin  
**Date:** 10/5/2023



Maps Provided By:  
  
 CUSTOMIZED ONLINE MAPPING  
 © AgriData, Inc. 2023 www.AgriDataInc.com



Classification Code	Type	Acres
R4SBC	Riverine	0.60
PFO1C	Freshwater Forested/Shrub Wetland	0.36
PEM1A	Freshwater Emergent Wetland	0.30
PEM1C	Freshwater Emergent Wetland	0.15
PUBFh	Freshwater Pond	0.14
PFO1A	Freshwater Forested/Shrub Wetland	0.09
Total Acres		1.64

Data Source: National Wetlands Inventory website. U.S. DoI, Fish and Wildlife Service, Washington, D.C. <http://www.fws.gov/wetlands/>