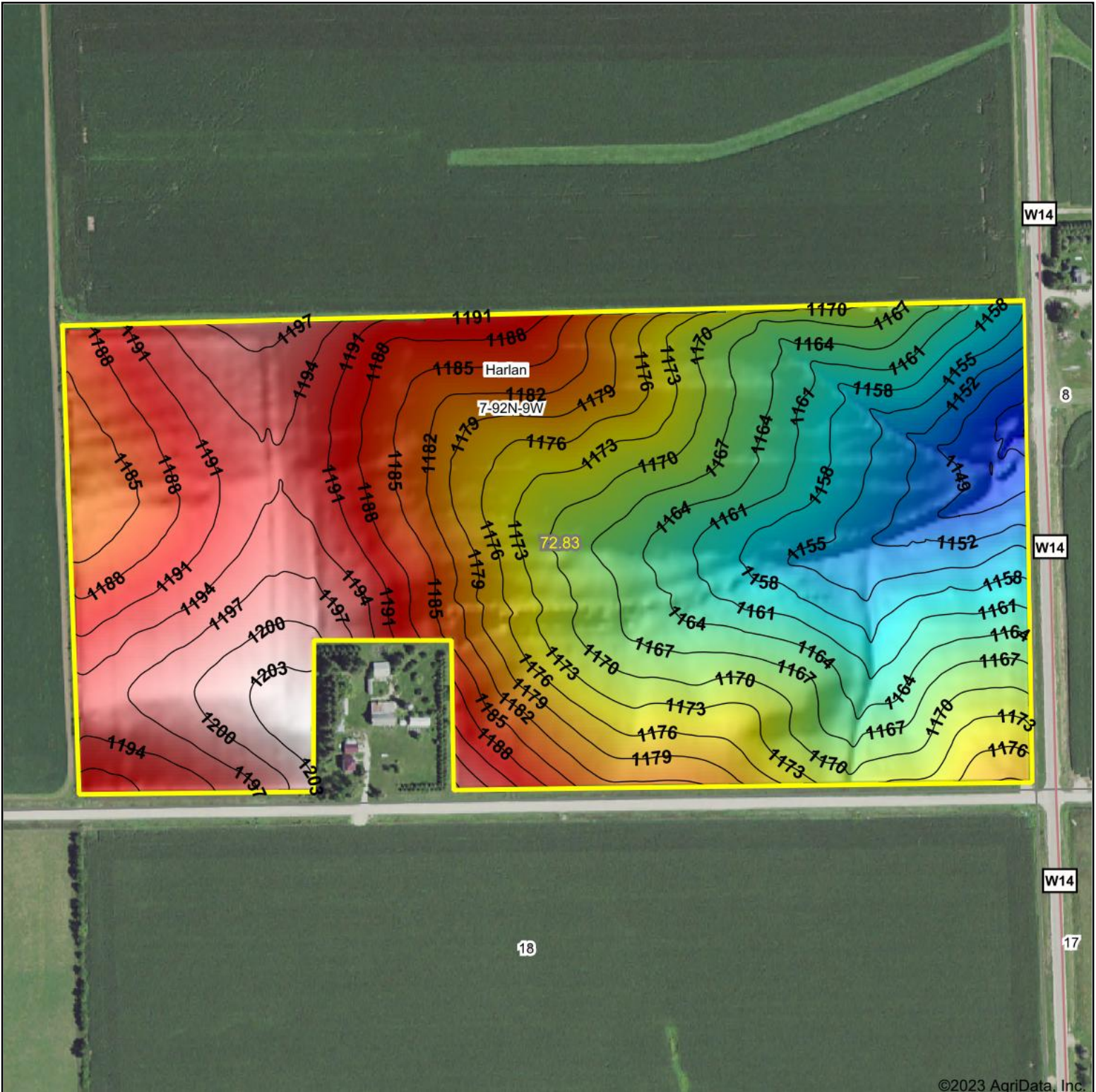


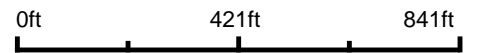
Topography Hillshade



©2023 AgriData, Inc.



Source: USGS 3 meter dem
 Interval(ft): 3
 Min: 1,143.0
 Max: 1,204.9
 Range: 61.9
 Average: 1,176.5
 Standard Deviation: 14.67 ft



7-92N-9W
Fayette County
Iowa

Boundary Center: 42° 47' 23.24, -91° 56' 50.47



Maps Provided By:



© AgriData, Inc. 2023

www.AgriDataInc.com