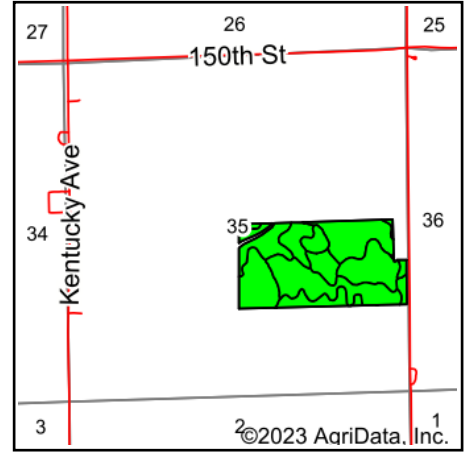
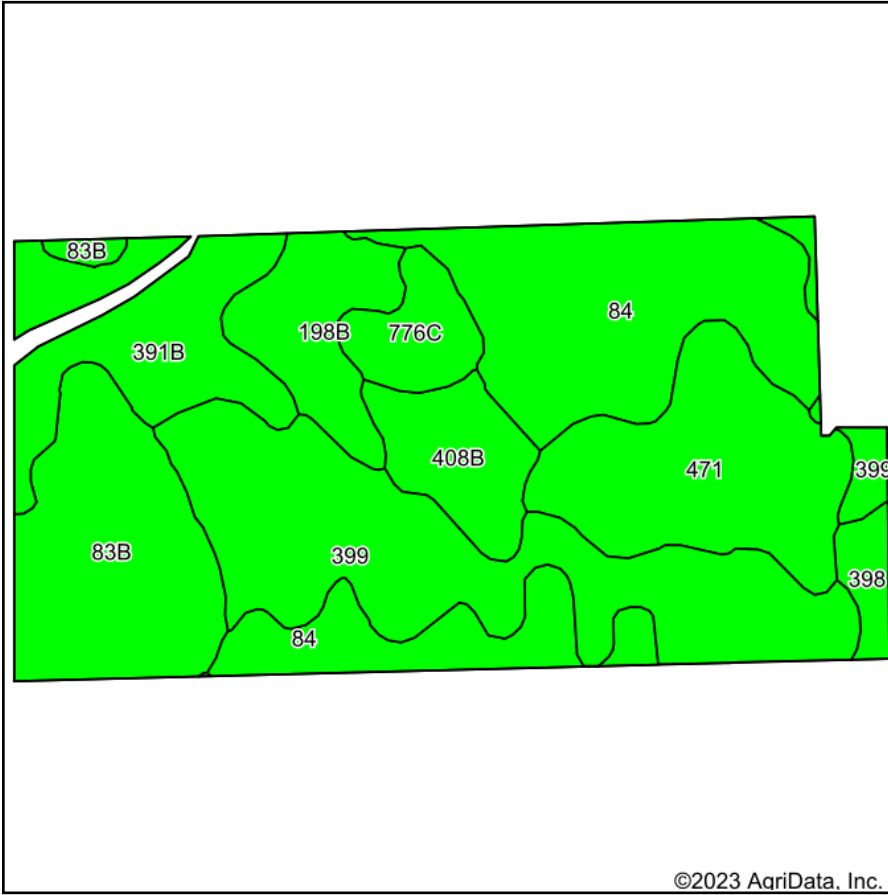


# Soils Map



State: **Iowa**  
 County: **Buchanan**  
 Location: **35-90N-9W**  
 Township: **Hazleton**  
 Acres: **76.29**  
 Date: **9/25/2023**



Maps Provided By:



Soils data provided by USDA and NRCS.

Area Symbol: IA019, Soil Area Version: 28

Code	Soil Description	Acres	Percent of field	CSR2 Legend	Non-Irr Class *c	CSR2**	CSR	*n NCCPI Overall	*n NCCPI Corn	*n NCCPI Small Grains	*n NCCPI Soybeans	
399	Readlyn silt loam, 1 to 3 percent slopes	17.58	23.0%		lw	91	91	79	79	54	65	
84	Clyde clay loam, 0 to 3 percent slopes	17.43	22.8%		llw	88	76	90	90	75	85	
83B	Kenyon loam, 2 to 5 percent slopes	10.58	13.9%		lle	90	86	87	86	66	71	
471	Oran loam, 1 to 3 percent slopes	10.20	13.4%		lw	74	86	77	77	51	58	
391B	Clyde-Floyd complex, 1 to 4 percent slopes	7.87	10.3%		llw	87	76	89	87	70	86	
198B	Floyd loam, 1 to 4 percent slopes	4.67	6.1%		llw	89	80	88	83	63	88	
408B	Olin sandy loam, 2 to 5 percent slopes	4.02	5.3%		lle	64	67	71	71	51	57	
776C	Lilah sandy loam, 2 to 9 percent slopes	2.68	3.5%		IVs	5	8	42	42	40	24	
398	Tripoli clay loam, 0 to 2 percent slopes	1.26	1.7%		llw	82	81	67	67	44	62	
<b>Weighted Average</b>						<b>1.71</b>	<b>82.8</b>	<b>79.6</b>	<b>*n 82</b>	<b>*n 81.4</b>	<b>*n 61.4</b>	<b>*n 71.1</b>

\*\*IA has updated the CSR values for each county to CSR2.

\*n: The aggregation method is "Weighted Average using all components"

\*c: Using Capabilities Class Dominant Condition Aggregation Method

Soils data provided by USDA and NRCS.