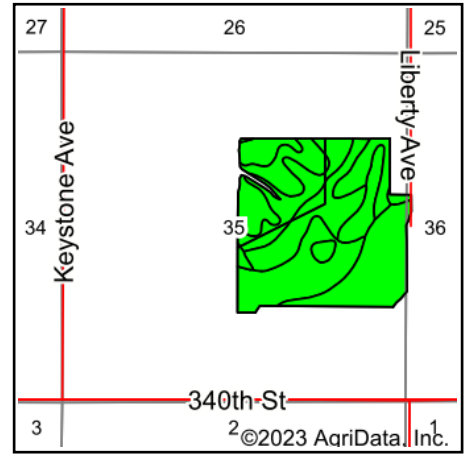
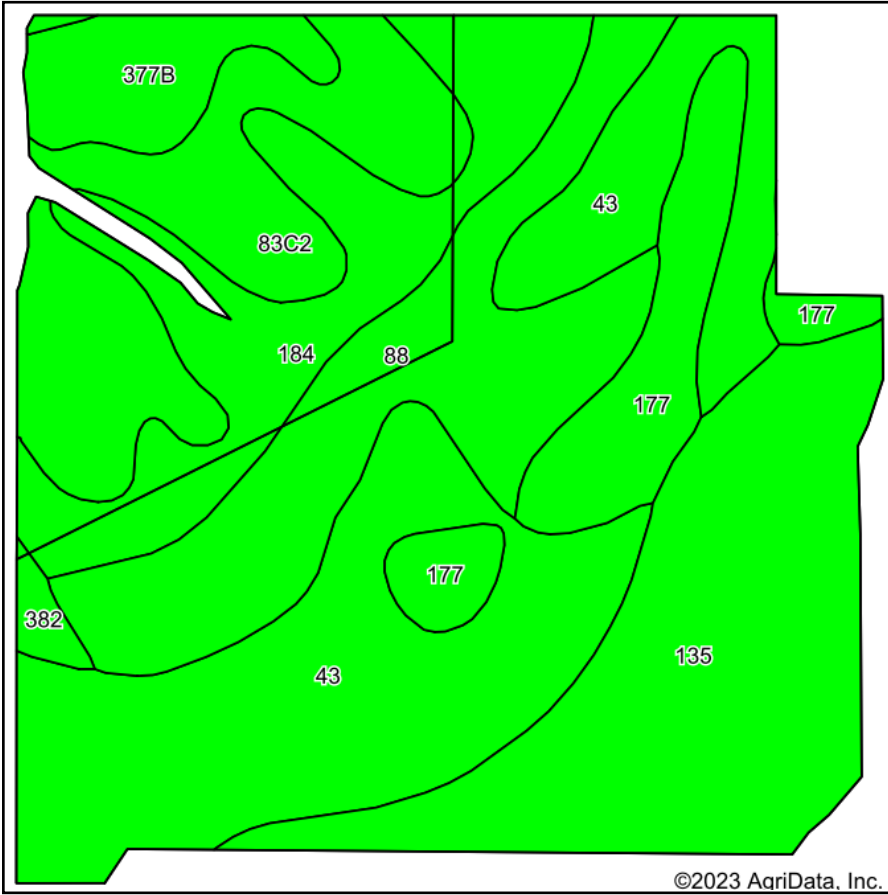


Soils Map



State: **Iowa**
 County: **Butler**
 Location: **35-90N-17W**
 Township: **Monroe**
 Acres: **145.15**
 Date: **9/25/2023**



Maps Provided By:



Soils data provided by USDA and NRCS.

Area Symbol: IA023, Soil Area Version: 28

Code	Soil Description	Acres	Percent of field	CSR2 Legend	Non-Irr Class *c	CSR2**	CSR	Corn Bu	Soybeans Bu	*n NCCPI Overall	*n NCCPI Corn	*n NCCPI Small Grains	*n NCCPI Soybeans	
43	Bremer silty clay loam, 0 to 2 percent slopes, rarely flooded	38.20	26.3%		Ilw	79	82			79	79	63	66	
135	Coland clay loam, 0 to 2 percent slopes, occasionally flooded	29.71	20.5%		Ilw	65	80			87	87	44	66	
88	Nevin silty clay loam, 0 to 2 percent slopes	21.35	14.7%		Iw	95	90			98	98	76	87	
83C2	Kenyon loam, 5 to 9 percent slopes, eroded	19.23	13.2%		Ille	84	68	212	61	77	77	57	56	
184	Klinger silty clay loam, 1 to 4 percent slopes	18.07	12.4%		Iw	95	95			88	88	79	82	
177	Saude loam, 0 to 2 percent slopes	11.43	7.9%		Ils	60	63			78	78	65	61	
377B	Dinsdale silty clay loam, 2 to 5 percent slopes	6.10	4.2%		Ile	94	90			87	87	68	74	
382	Maxfield silty clay loam, 0 to 2 percent slopes	1.06	0.7%		Ilw	87	90			79	79	53	67	
Weighted Average						1.86	80.3	81.4	28.1	8.1	*n 84.5	*n 84.5	*n 62.5	*n 69.7

**IA has updated the CSR values for each county to CSR2.

*n: The aggregation method is "Weighted Average using all components"

*c: Using Capabilities Class Dominant Condition Aggregation Method

Soils data provided by USDA and NRCS.