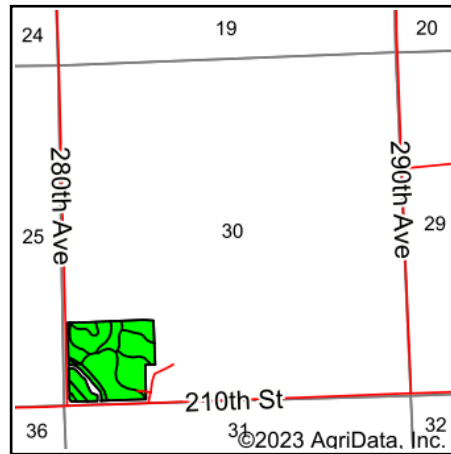
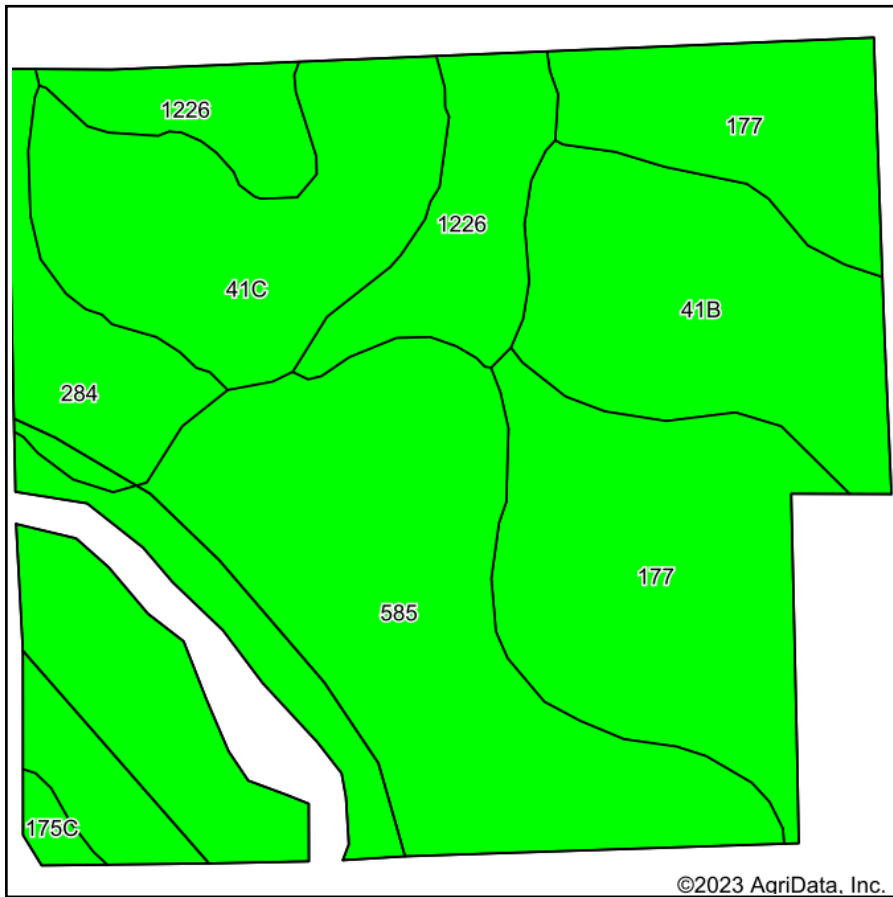


# Soils Map



State: **Iowa**  
 County: **Delaware**  
 Location: **30-89N-3W**  
 Township: **Bremen**  
 Acres: **34.89**  
 Date: **9/23/2023**



Maps Provided By:



Soils data provided by USDA and NRCS.

Area Symbol: IA055, Soil Area Version: 29

Code	Soil Description	Acres	Percent of field	CSR2 Legend	Non-Irr Class *c	Irr Class *c	CSR2**	CSR	*n NCCPI Overall	*n NCCPI Corn	*n NCCPI Small Grains	*n NCCPI Soybeans	*n NCCPI Cotton		
585	Coland-Spillville complex, 0 to 2 percent slopes, occasionally flooded	12.21	35.0%		IIw		70	83	77	77	33	68			
177	Saupe loam, 0 to 2 percent slopes	8.13	23.3%		IIs		60	63	78	78	65	61			
41B	Sparta loamy fine sand, 2 to 5 percent slopes	4.65	13.3%		IVs	IIe	39	40	34	34	31	30			
41C	Sparta loamy fine sand, 5 to 9 percent slopes	4.54	13.0%		IVs	IIe	34	25	33	33	30	30			
1226	Lawler loam, 0 to 2 percent slopes, rarely flooded	3.29	9.4%		IIs		59	72	83	83	70	60	1		
284	Flagler fine sandy loam, 0 to 2 percent slopes	1.84	5.3%		IIIs		56	50	63	63	53	37			
175C	Dickinson fine sandy loam, 5 to 9 percent slopes	0.23	0.7%		IIIe		45	40	60	60	52	36			
<b>Weighted Average</b>							<b>2.59</b>	<b>*</b>	<b>56.9</b>	<b>62</b>	<b>*n 65.5</b>	<b>*n 65.5</b>	<b>*n 44.5</b>	<b>*n 53.8</b>	<b>*n 0.1</b>

\*\*IA has updated the CSR values for each county to CSR2.

\*n: The aggregation method is "Weighted Average using all components"

\*c: Using Capabilities Class Dominant Condition Aggregation Method

\*- Irr Class weighted average cannot be calculated on the current soils data due to missing data.

Soils data provided by USDA and NRCS.