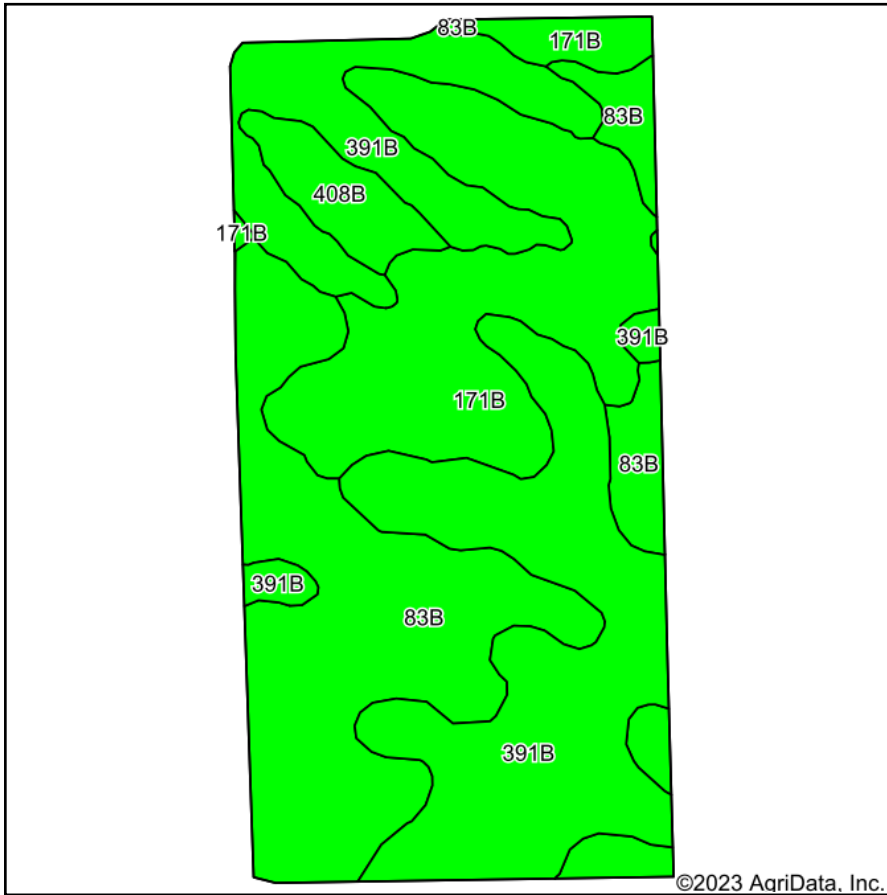
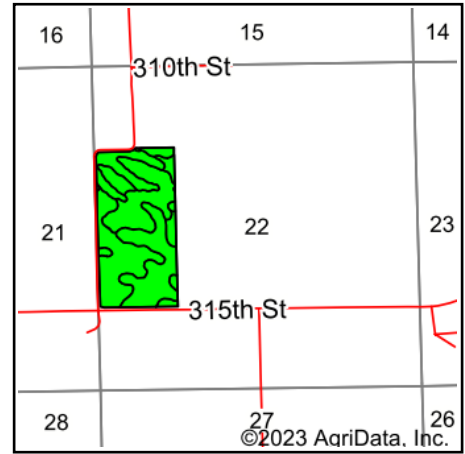


# Soils Map



Soils data provided by USDA and NRCS.



State: **Iowa**  
 County: **Delaware**  
 Location: **22-87N-4W**  
 Township: **Union**  
 Acres: **75.26**  
 Date: **9/23/2023**



Maps Provided By:



© AgriData, Inc. 2023

www.AgriDataInc.com



Area Symbol: IA055, Soil Area Version: 29

Code	Soil Description	Acres	Percent of field	CSR2 Legend	Non-Irr Class *c	CSR2**	CSR	Corn Bu	Soybeans Bu	*n NCCPI Overall	*n NCCPI Corn	*n NCCPI Small Grains	*n NCCPI Soybeans	
391B	Clyde-Floyd complex, 1 to 4 percent slopes	29.37	39.0%		llw	87	74			89	87	70	86	
83B	Kenyon loam, 2 to 5 percent slopes	24.18	32.1%		lle	90	86			87	86	66	71	
171B	Bassett loam, 2 to 5 percent slopes	18.84	25.0%		lle	85	81	215	62	85	85	68	73	
408B	Olin sandy loam, 2 to 5 percent slopes	2.87	3.8%		lle	64	68			71	71	51	57	
<b>Weighted Average</b>						<b>2.00</b>	<b>86.6</b>	<b>79.4</b>	<b>53.8</b>	<b>15.5</b>	<b>*n 86.7</b>	<b>*n 85.6</b>	<b>*n 67.5</b>	<b>*n 76.8</b>

\*\*IA has updated the CSR values for each county to CSR2.

\*n: The aggregation method is "Weighted Average using all components"

\*c: Using Capabilities Class Dominant Condition Aggregation Method

Soils data provided by USDA and NRCS.